





**** 5% deposit paid worth £20,500* + save over
£3,750 in luxury upgrades ****

This impressive 1,352 sq ft four-bedroom detached home has been thoughtfully designed with modern family living in mind, offering spacious, light-filled interiors and a range of premium features throughout.

Occupying a desirable west-facing plot, the home benefits from a bright and welcoming living room featuring a striking bay window, while double French doors open from the rear of the property onto the garden, creating the perfect space for indoor-outdoor living and entertaining.

At the heart of the home is a premium British-designed kitchen, complete with a range of integrated appliances, including a dishwasher, and the opportunity to personalise your space with your choice of kitchen floor tiles.

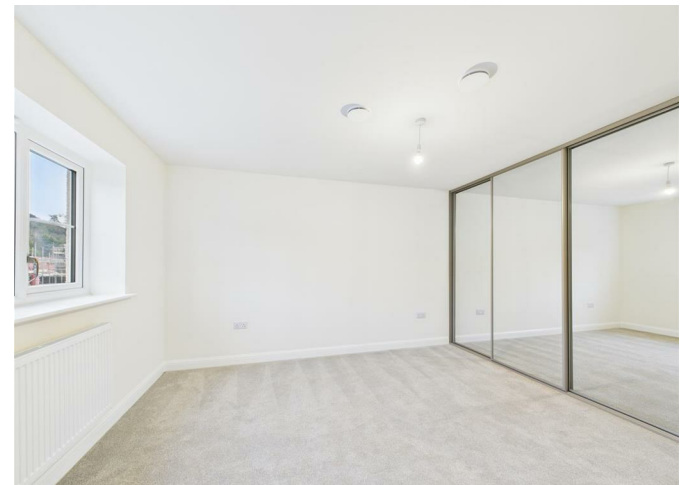
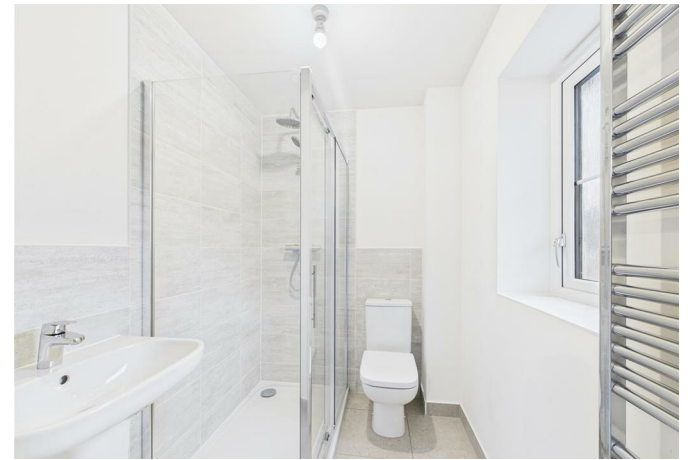
Upstairs, the generous master bedroom boasts fitted wardrobes and a stylish en-suite shower room, complemented by three further well-proportioned bedrooms and contemporary family bathroom fitted with premium white sanitary ware.

Externally, the property benefits from a private driveway and integral single garage, providing ample parking and storage.

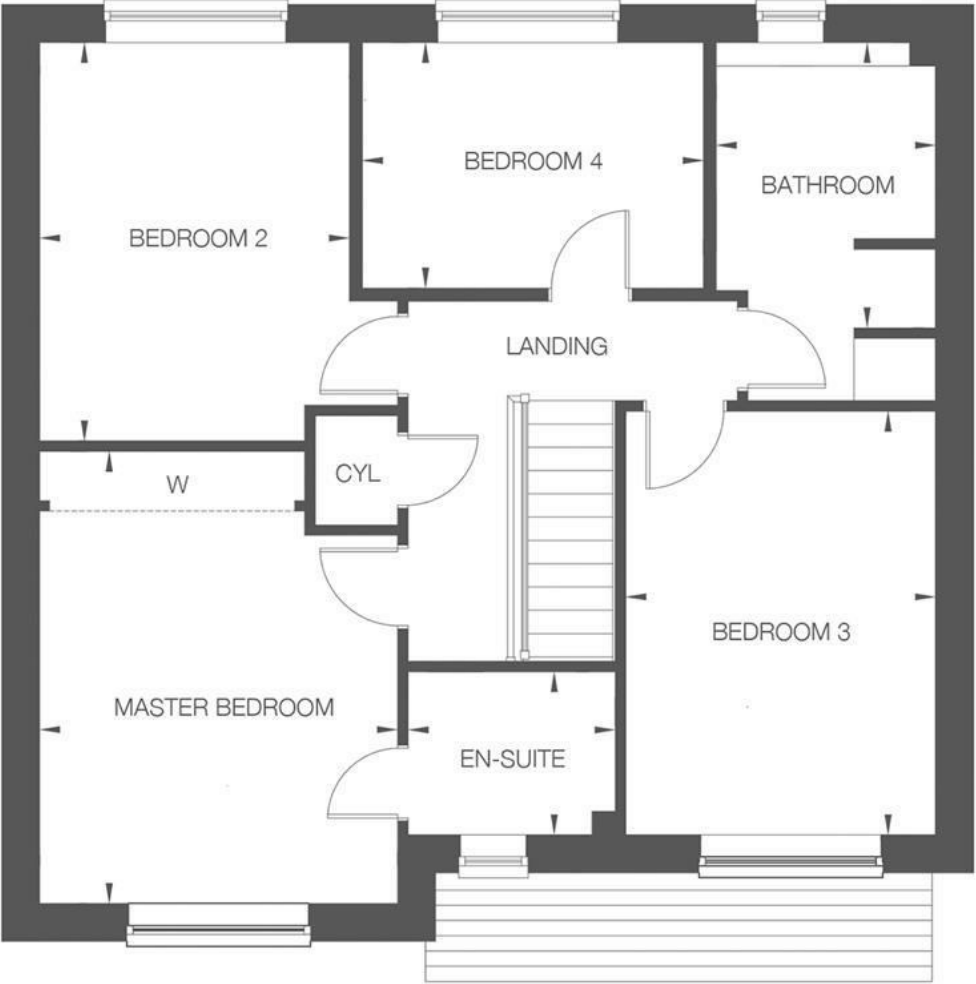
Designed for modern living, this energy-efficient home also features PV solar panels to help reduce running costs, alongside the reassurance of an NHBC 10-year warranty.

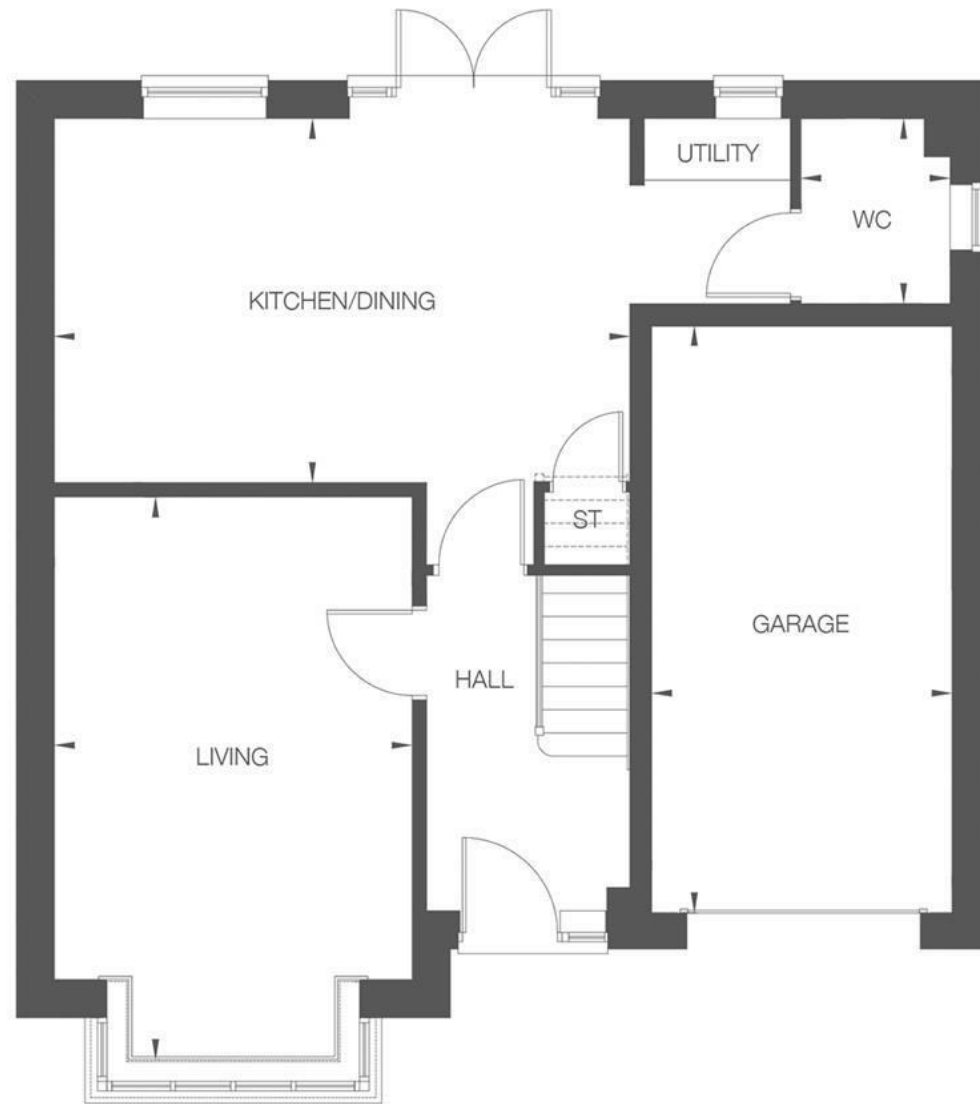














Energy Efficiency Rating

	Current	Potential
<i>Very energy efficient - lower running costs</i>		
(92 plus) A		
(81-91) B		
(69-80) C		
(55-68) D		
(39-54) E		
(21-38) F		
(1-20) G		
<i>Not energy efficient - higher running costs</i>		
England & Wales	EU Directive 2002/91/EC	