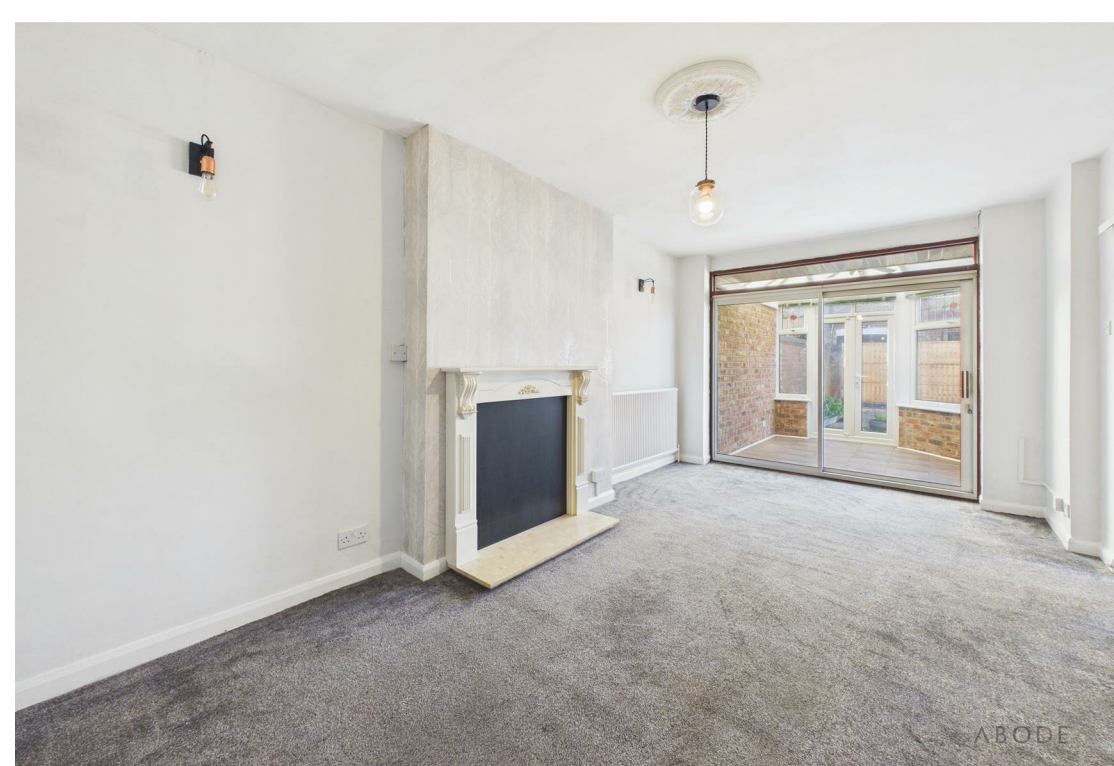
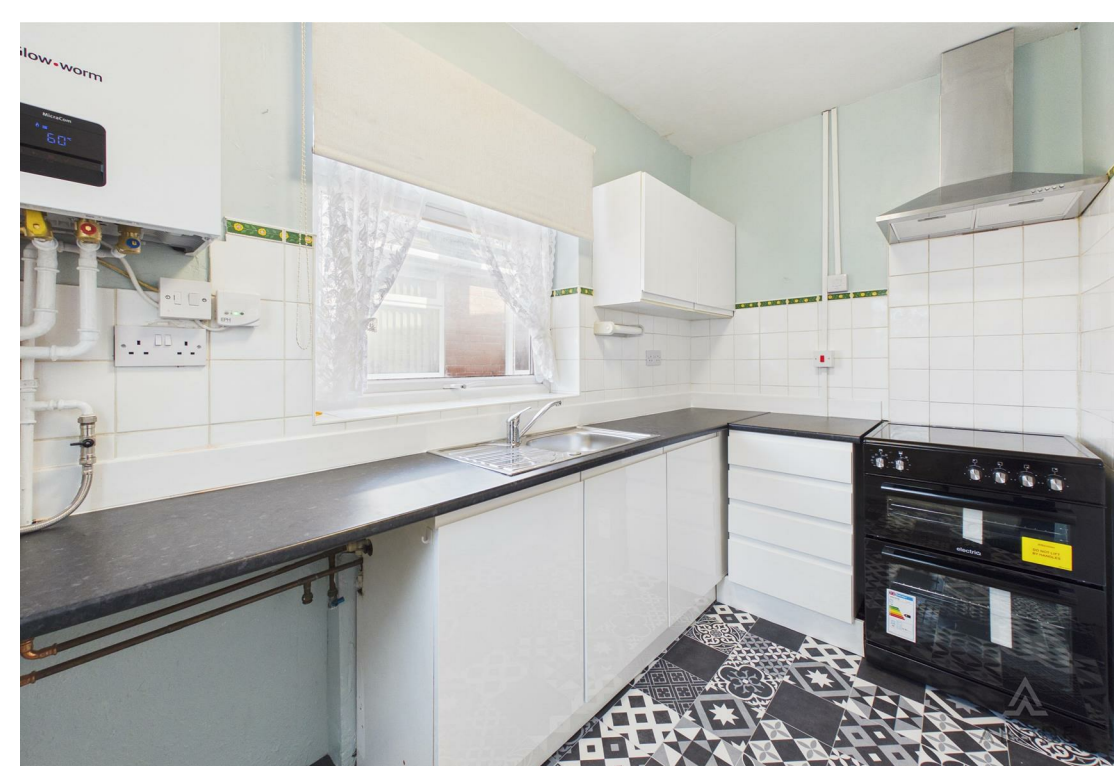


2 Shelley Avenue, Burton-On-Trent, DE14 2QZ

£950 PCM





ABODE

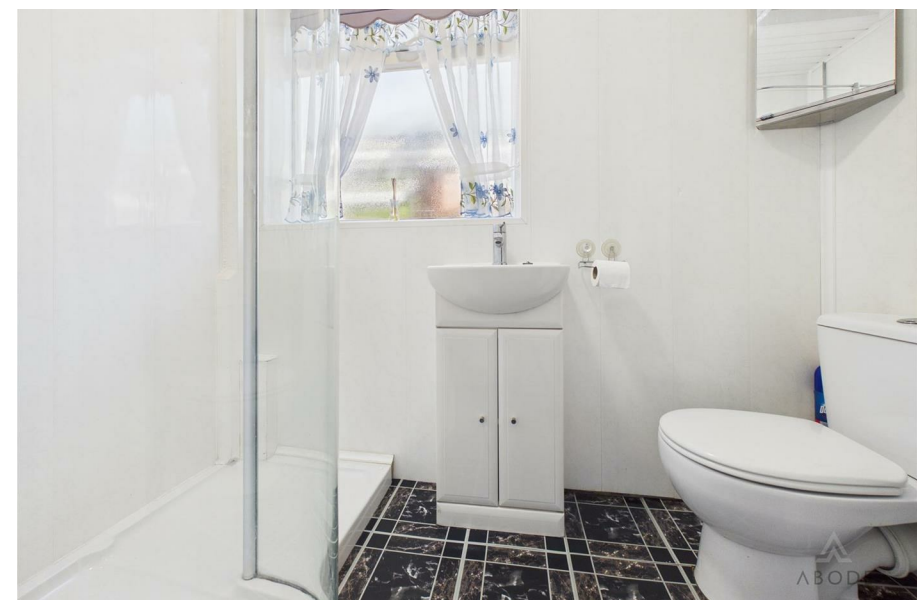
ABODE

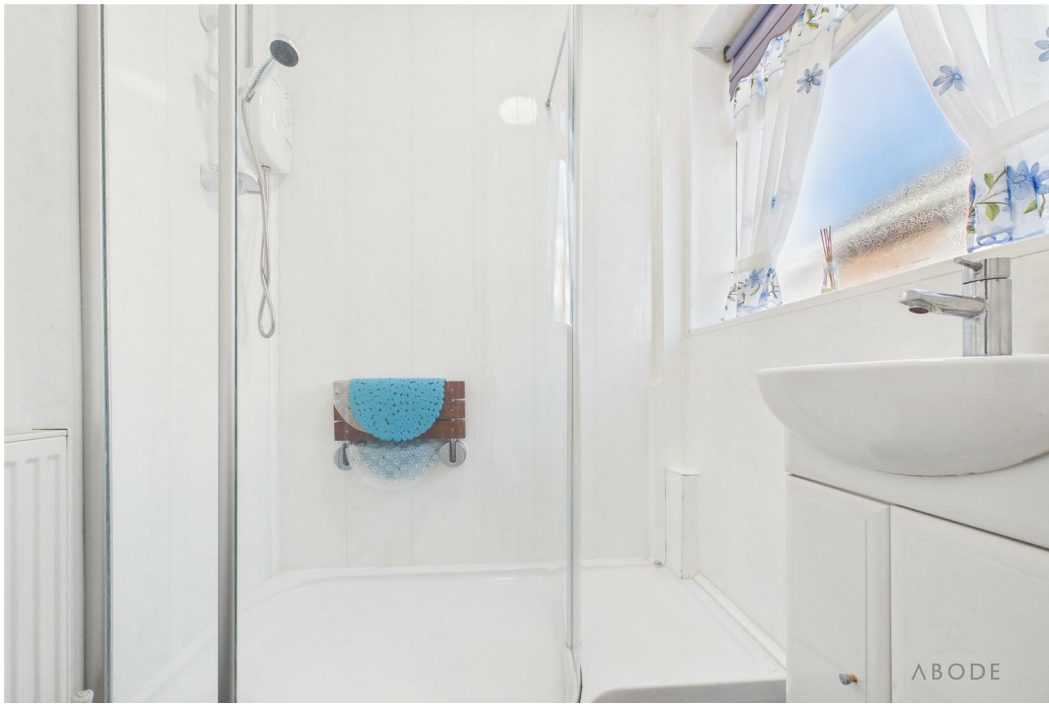
Set in a peaceful cul-de-sac, this two-bedroom semi-detached bungalow offers great potential for tenants seeking a comfortable home. With gas central heating, uPVC double glazing, and a flexible layout, it's ideal for professionals, small families, or downsizers.

The property features a welcoming entrance, a bright lounge/diner with a central fireplace leading to a conservatory, and a kitchen with ample storage and a Worcester combi boiler. There are two bedrooms and a shower room, plus loft access for additional storage.

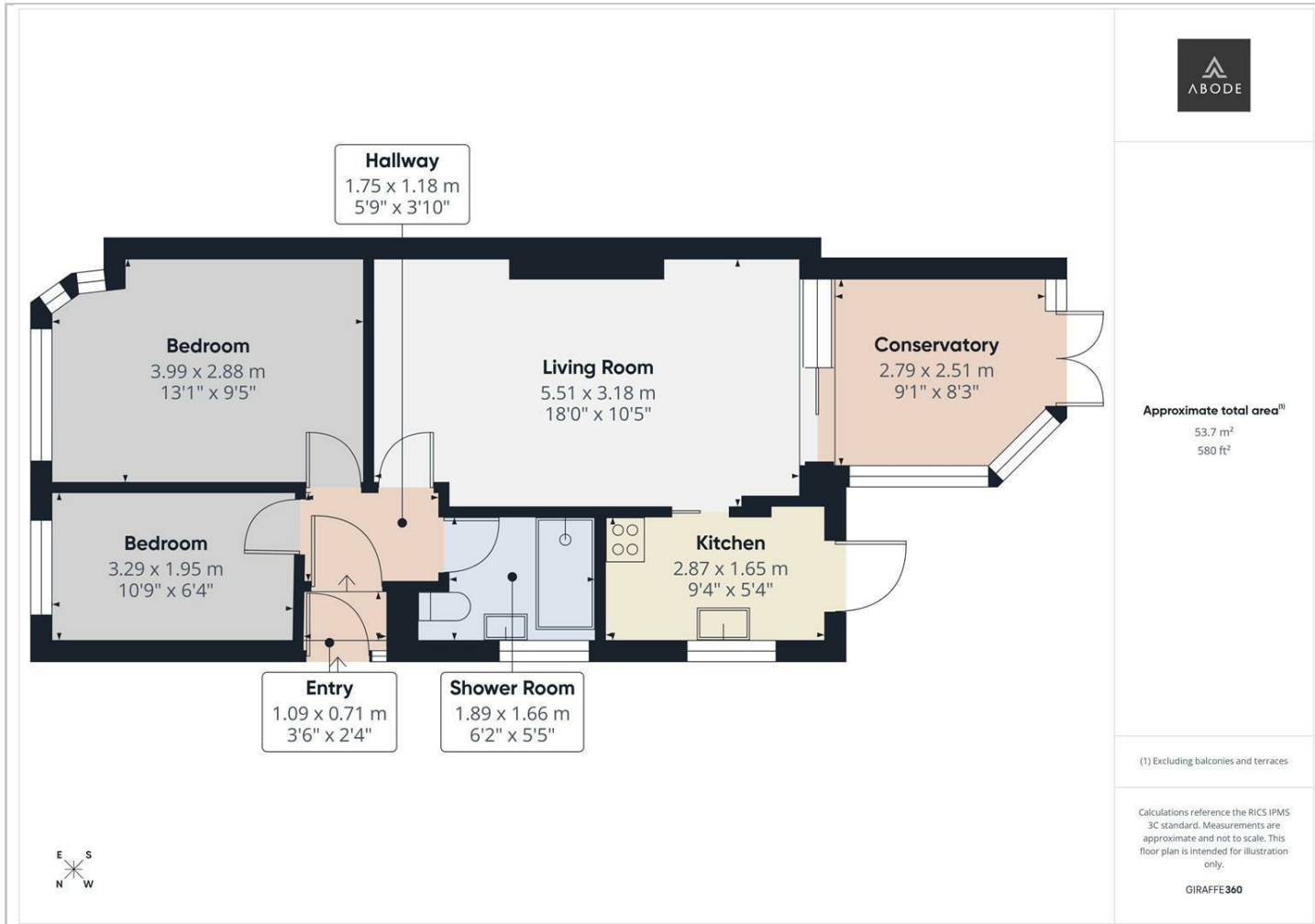
Outside, the front garden includes a driveway and garage, while the private rear garden is low-maintenance and perfect for relaxing.



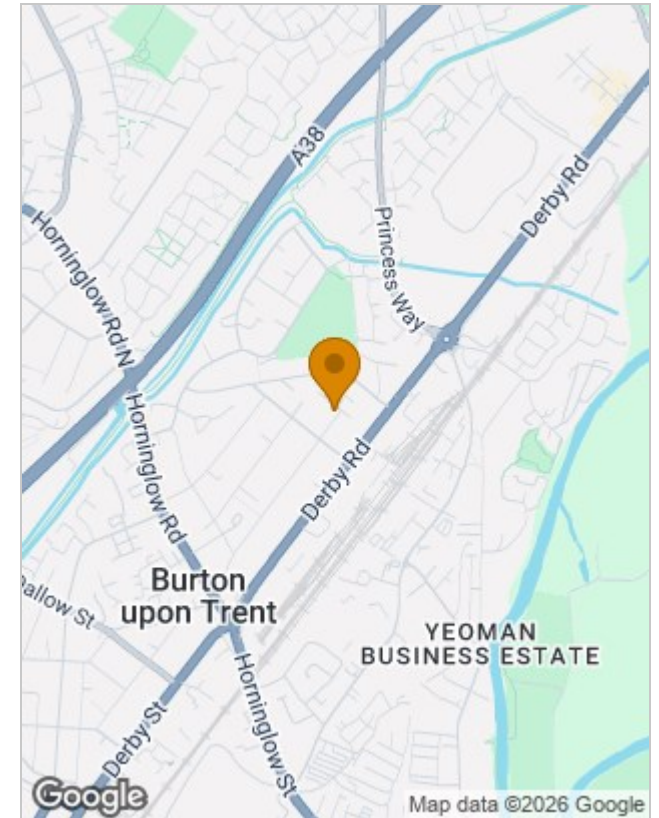




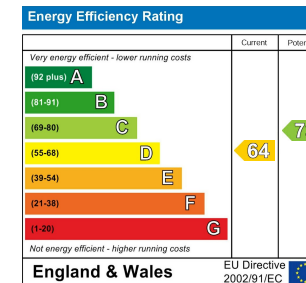
Floor Plans



Location Map



Energy Performance Graph



Please contact our Burton Lettings Office on 01283 845888 if you wish to arrange a viewing appointment for this property or require further information.

The particulars are set out as a general outline only for the guidance of intended purchasers or lessees, and do not constitute, any part of a contract. Nothing in these particulars shall be deemed to be a statement that the property is in good structural condition or otherwise nor that any of the services, appliances, equipment or facilities are in good working order. Purchasers should satisfy themselves of this prior to purchasing.