



58 Pugin Road Bramshall, Uttoxeter, ST14 5FX

ABODE Lettings are pleased to offer this modern three bedroom semi-detached house situated in Uttoxeter which has great local road links.

This is a great opportunity to secure a modern family home in a much sought after location which offers superb local amenities including schooling and leisure activities.

In brief, the accommodation provides - Fully fitted kitchen/diner with a great selection of wall and base units. Large living area to the front and downstairs WC.

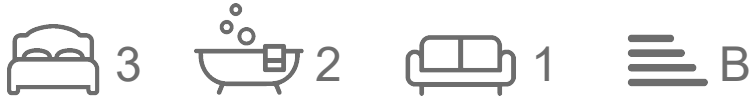
The first floor provides three bedrooms. These rooms are serviced by the main family bathroom which is three piece suite and en-suite shower room to the master.

To the frontage there is off road parking for two cars.

£1,295 Per Month

58 Pugin Road

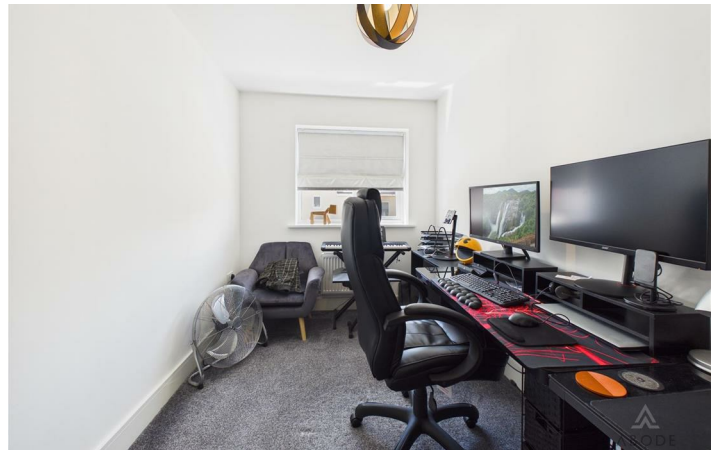
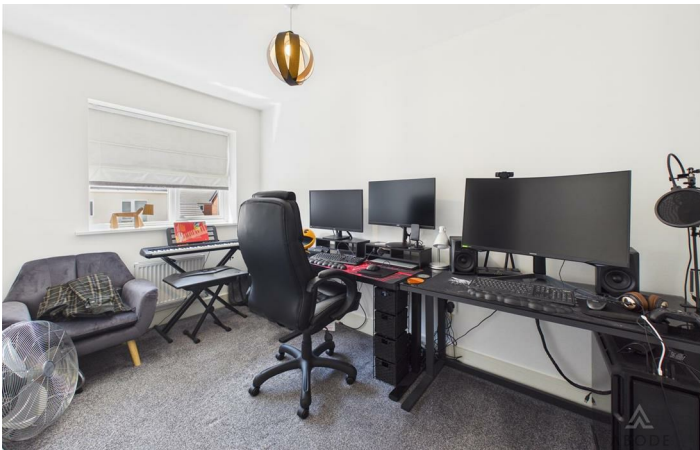
Bramshall, Uttoxeter, ST14 5FX



- Modern 3-bedroom semi-detached home.
- Fully fitted kitchen/diner.
- Master bedroom with en-suite.
- Rear garden with patio and shed.
- Located in Uttoxeter with good road links.
- Spacious living room.
- Family bathroom.
- Close to schools and local amenities.
- Downstairs WC.
- Parking for 2 cars.



[Directions](#)



Floor Plan

These particulars, whilst believed to be accurate are set out as a general outline only for guidance and do not constitute any part of an offer or contract. Intending purchasers should not rely on them as statements of representation of fact, but must satisfy themselves by inspection or otherwise as to their accuracy. No person in this firm's employment has the authority to make or give any representation or warranty in respect of the property.

1 Cross Street, Cheadle, ST10 1NP
Tel: Email: lettings@abodemidlands.co.uk

Energy Efficiency Rating		Current	Potential
<i>Very energy efficient - lower running costs</i>			
(92 plus) A			95
(81-91) B		83	
(69-80) C			
(55-68) D			
(39-54) E			
(21-38) F			
(1-20) G			
<i>Not energy efficient - higher running costs</i>			
England & Wales		EU Directive 2002/91/EC	