





Set within the highly sought-after Cameron Homes development in Tatenhill, this beautifully presented new-build three-bedroom detached family home offers a perfect blend of modern design, space, and energy efficiency.

Occupying an attractive corner plot, the property benefits from a private walled rear garden with a desirable west-facing aspect. Inside, the home is thoughtfully designed for contemporary living, featuring a bright and spacious open-plan kitchen and dining area. A separate utility room with convenient side-door access and a generously sized, separate living room.

Upstairs, the master bedroom boasts fitted wardrobes and a stylish en suite. Two further well-proportioned bedrooms offer flexible accommodation and family bathroom.

This home also benefits from solar panels and energy-efficient features, helping to reduce running costs while supporting a more sustainable lifestyle and NHBC warranty.



Ground Floor

Living Room

10.8 x 18

Kitchen Diner

9.3 x 18

Utility

6.9 x 6.1

W/C

3.4 x 4.10

First Floor

Master Bedroom

9.4 x 12.11

Ensuite

9.4 x 4.9

Bedroom Two

10.8 x 10.7

Bedroom Three

8.6 x 7.1

Bathroom

6.10 x 5.7

What's included

Premium British-designed JT Ellis kitchen with Electrolux appliances

Fridge freezer, single built-in oven, electric hob, and cooker hood included

Choice of additional and upgraded appliances available

A range of optional kitchen design upgrades

Premium white sanitaryware to bathroom, ensuite



and cloakroom

Award-winning Worcester Bosch combination boiler

Double french doors to the rear garden

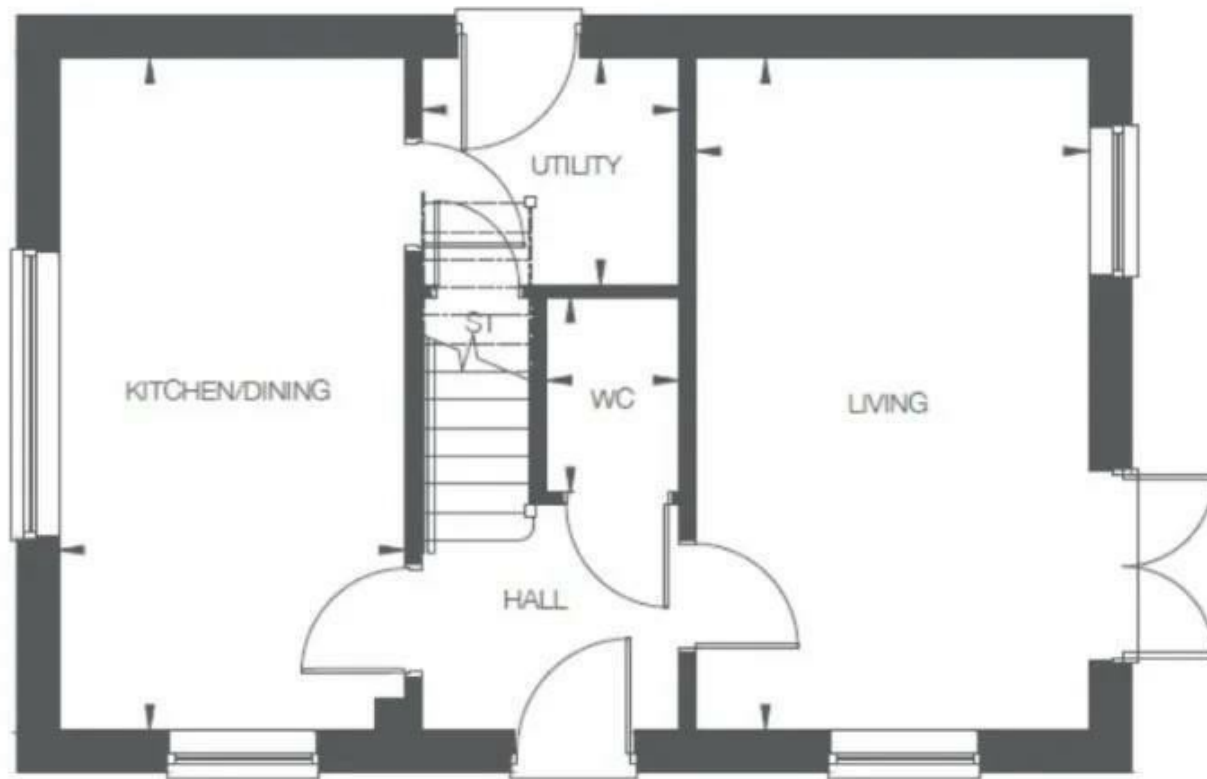
Built to last, high-quality materials

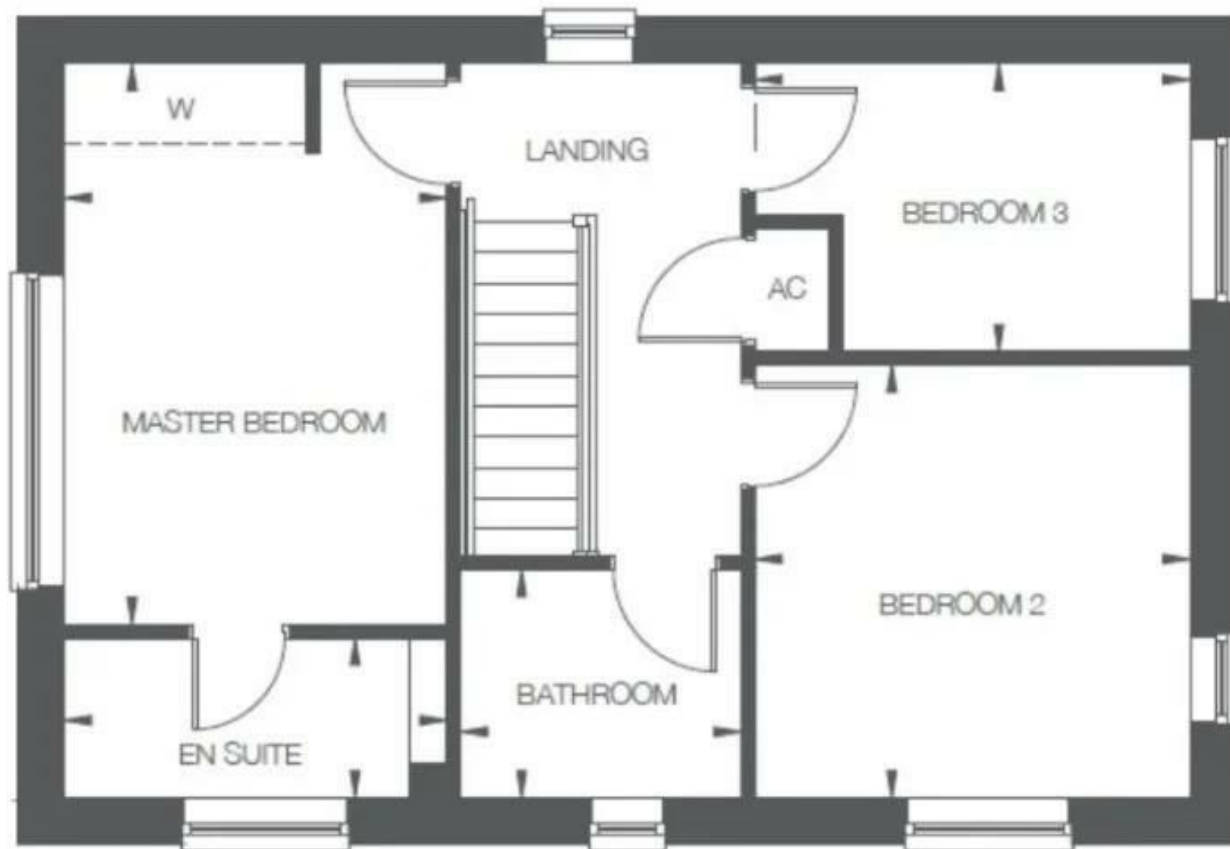
Energy efficient for lower bills

NHBC 10-year warranty











Energy Efficiency Rating

	Current	Potential
Very energy efficient - lower running costs		
(92 plus) A		
(81-91) B		
(69-80) C		
(55-68) D		
(39-54) E		
(21-38) F		
(1-20) G		
Not energy efficient - higher running costs		
England & Wales	EU Directive 2002/91/EC	