



9 Curlew Close

Uttoxeter, Staffordshire, ST14 8TR

ABODE Lettings are pleased to offer for long term rental, this well presented & recently upgraded three bedroom semi-detached family home with single brick garage. Situated within a quiet residential road on the edge of Uttoxeter town centre with easy access to amenities. Available - June 2026.

£1,150 PCM

9 Curlew Close

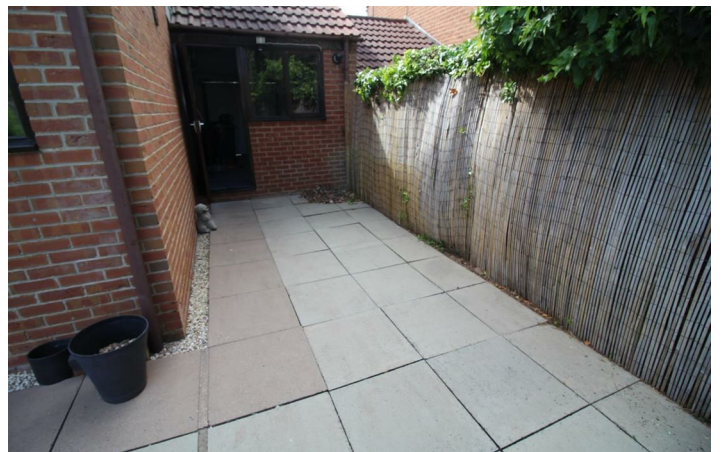
Uttoxeter, Staffordshire, ST14 8TR



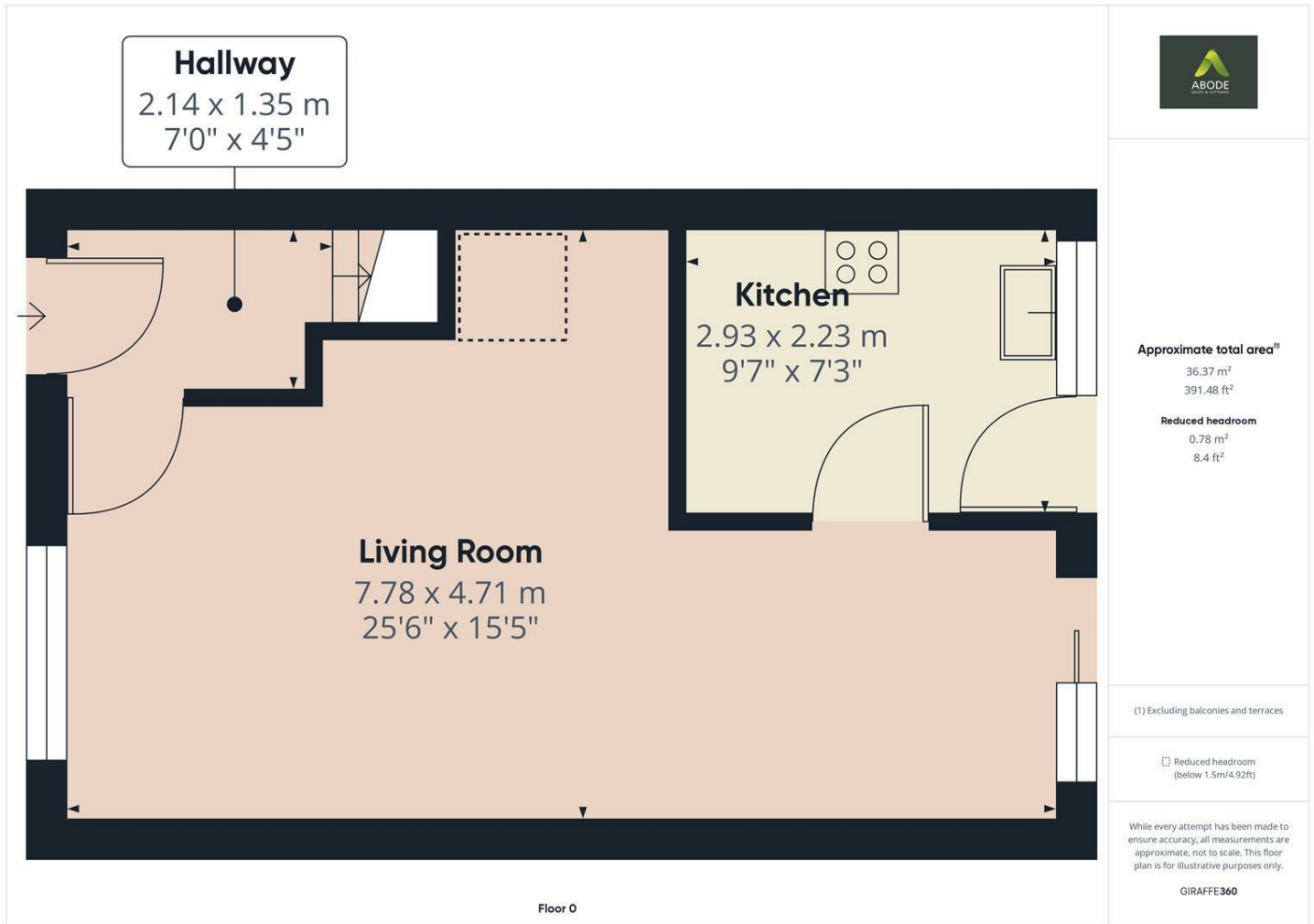
- Recently upgraded Inc. modern carpets
- Open plan lounge diner with feature fireplace
- Single garage + driveway parking
- Modern family home with three bedrooms
- Private and secure rear garden with patio & lawn
- Available now - June 2026
- Spacious kitchen with a good selection of wall and base units
- Close to town centre - Great amenities



[Directions](#)



Floor Plan



These particulars, whilst believed to be accurate are set out as a general outline only for guidance and do not constitute any part of an offer or contract. Intending purchasers should not rely on them as statements of representation of fact, but must satisfy themselves by inspection or otherwise as to their accuracy. No person in this firm's employment has the authority to make or give any representation or warranty in respect of the property.

1 Cross Street, Cheadle, ST10 1NP
Tel: Email: lettings@abodemidlands.co.uk

