

25 Laurel Grove, Uttoxeter, ST14 7EL

£995 PCM



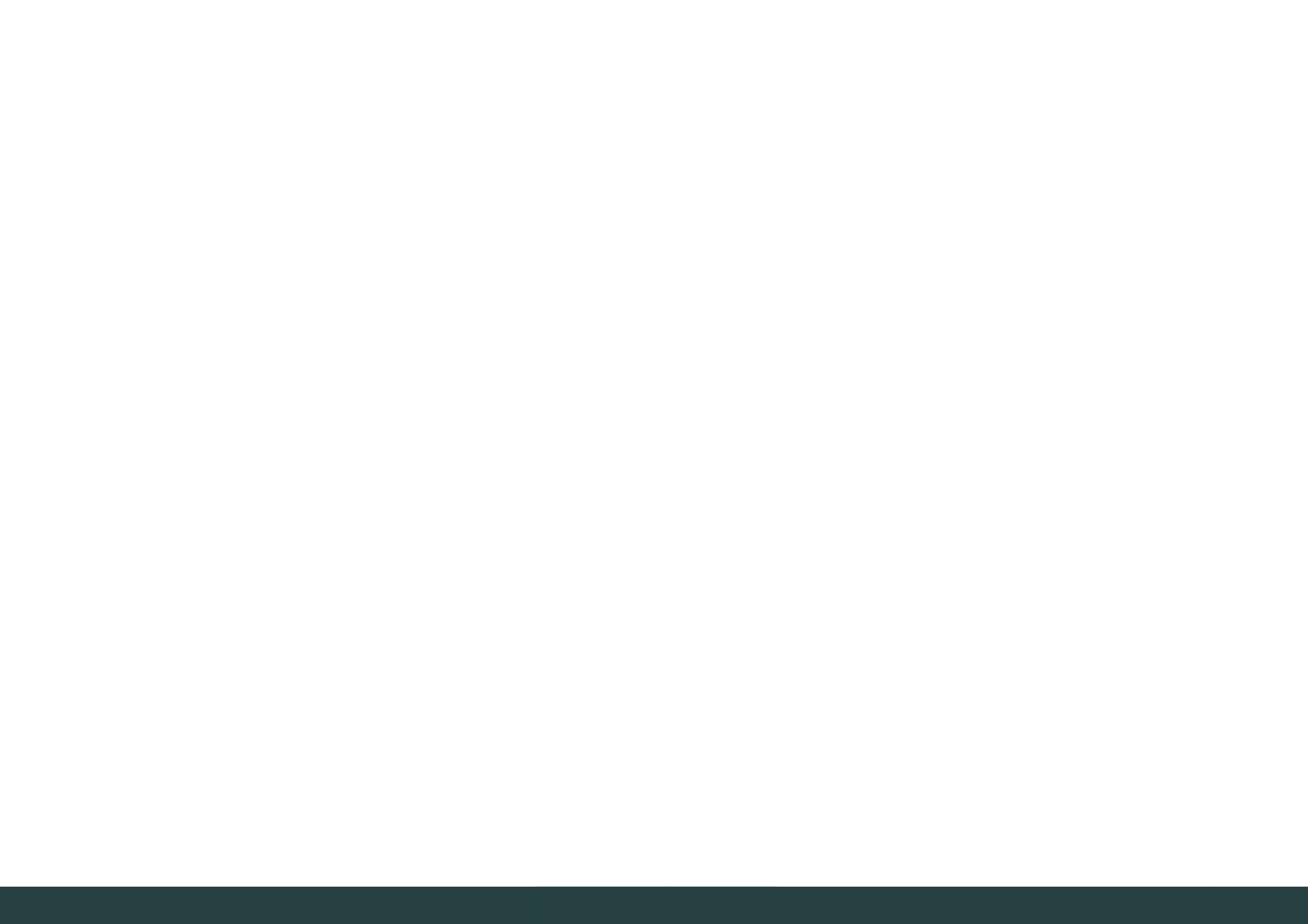


ABODE are pleased to offer this well presented modern three bedroom mid-town house located within walking distance to the Uttoxeter town centre. The internal accommodation comprises hallway, kitchen, WC/cloakroom, lounge/diner, three bedrooms and family bathroom. Being fully uPVC double glazed and gas centrally heated this property must be viewed to be appreciated.

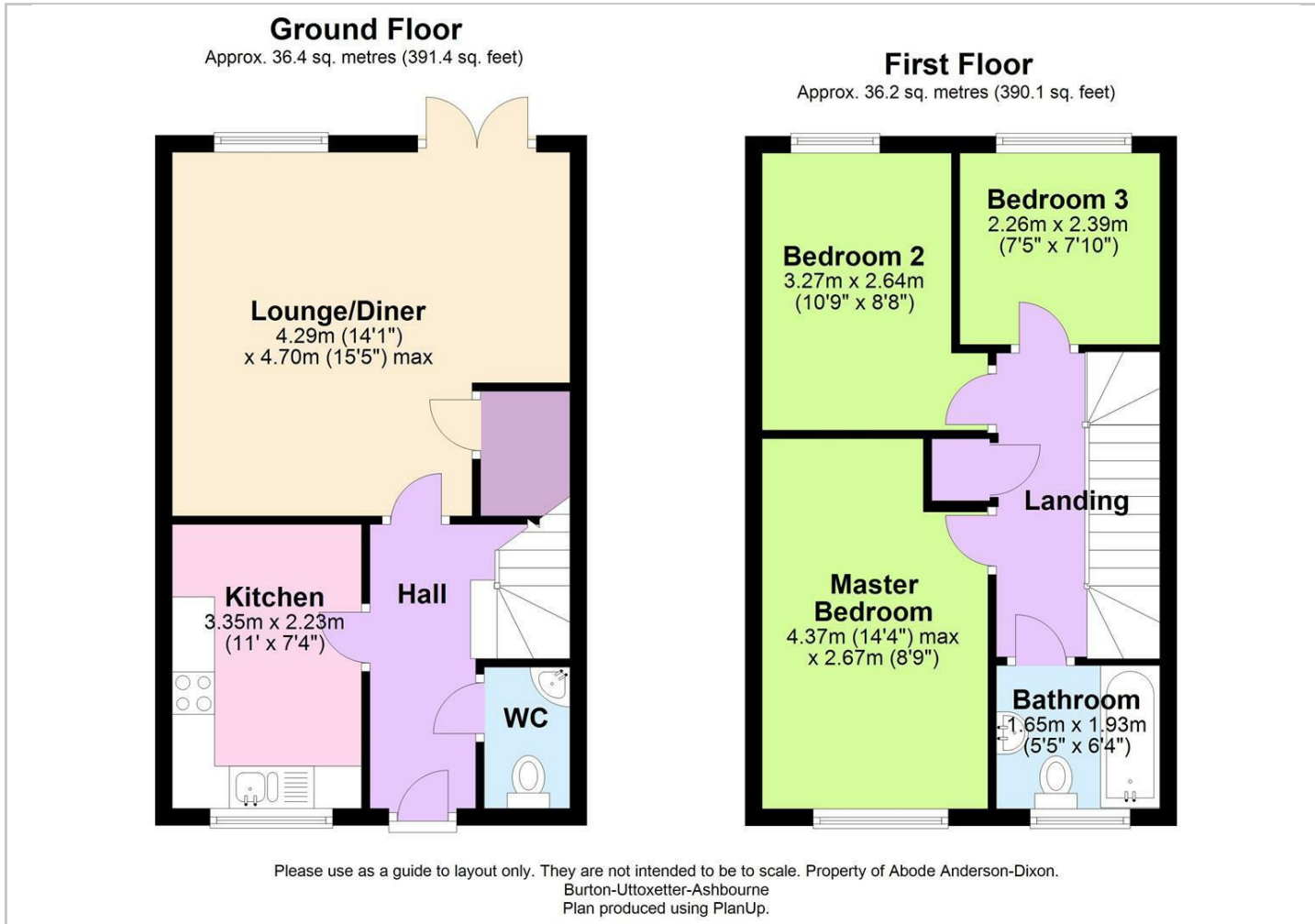
With two off-road parking spaces to the front elevation and gardens to the rear which are mainly laid to lawn.

Call ABODE to arrange a viewing.

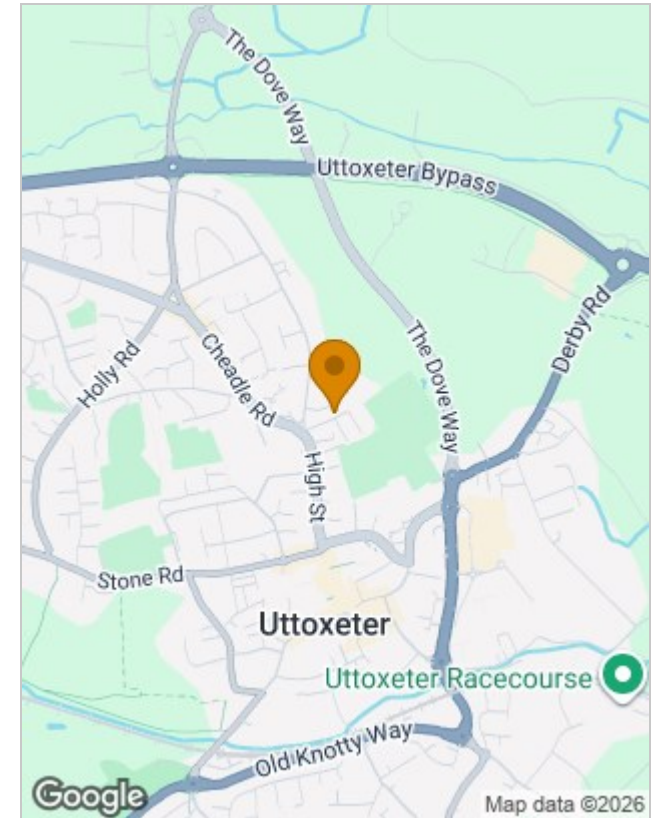




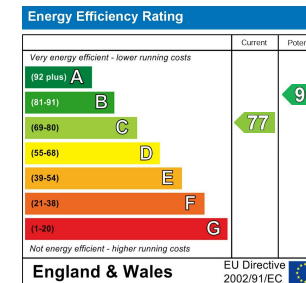
Floor Plans



Location Map



Energy Performance Graph



Please contact our Burton Lettings Office on 01283 845888 if you wish to arrange a viewing appointment for this property or require further information.

The particulars are set out as a general outline only for the guidance of intended purchasers or lessees, and do not constitute, any part of a contract. Nothing in these particulars shall be deemed to be a statement that the property is in good structural condition or otherwise nor that any of the services, appliances, equipment or facilities are in good working order. Purchasers should satisfy themselves of this prior to purchasing.