

17 Drovers Close, Uttoxeter, ST14 7FH

£1,095 PCM





ABODE are pleased to offer for rental this modernised three bedroom mid terraced family home situated on the edge of the Uttoxeter town centre.

This is a rare opportunity to secure a lovely family home in a much sought after location which offers superb local amenities including schooling, leisure activities and road links.

In brief, the accommodation provides - Kitchen/Breakfast Room with a great selection of wall and base units with a selection of appliances. Good size lounge with feature patio doors to the rear. Guest cloakroom with white suite.

The first floor provides three bedrooms. These rooms are serviced by an en-suite to the master in addition to the main family bathroom.

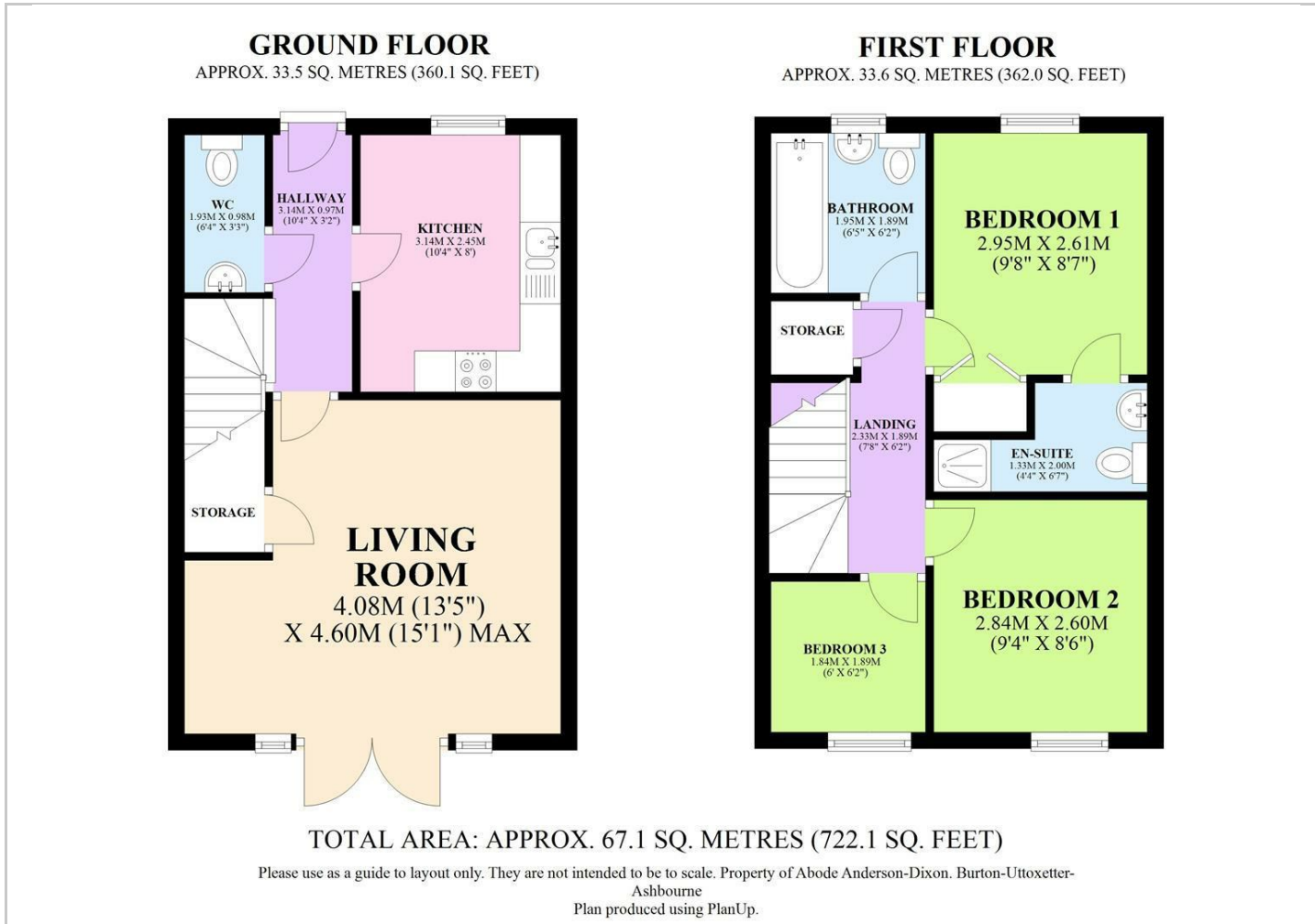
There is a low maintenance rear garden with a good sized patio area, small established garden to the front with allocated parking for two vehicles.



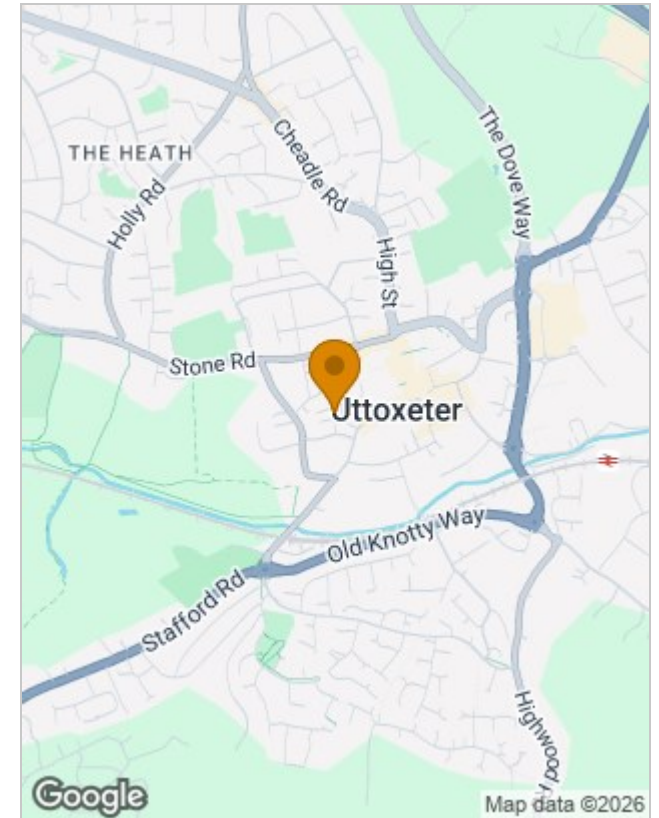




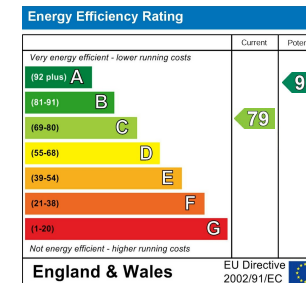
Floor Plans



Location Map



Energy Performance Graph



Please contact our Burton Lettings Office on 01283 845888 if you wish to arrange a viewing appointment for this property or require further information.

The particulars are set out as a general outline only for the guidance of intended purchasers or lessees, and do not constitute, any part of a contract. Nothing in these particulars shall be deemed to be a statement that the property is in good structural condition or otherwise nor that any of the services, appliances, equipment or facilities are in good working order. Purchasers should satisfy themselves of this prior to purchasing.