

368 Anglesey Road, Burton-On-Trent, DE14 3NN

£975 PCM





A spacious and well-presented two-bedroom terraced home located on Anglesey Road, Burton, offering approximately 829 sq ft of accommodation across two floors. Ideally suited to couples, small families, or professional tenants, the property provides generous living space in a convenient residential location.

The ground floor features two bright and versatile reception rooms, ideal for both living and dining areas, along with a fitted kitchen and a ground floor bathroom. Upstairs, the property offers two well-proportioned bedrooms and a further family bathroom, providing practical and comfortable accommodation throughout.

Externally, the property also benefits from a private rear yard/garden area.

Situated close to local shops, schools, and transport links, this home combines convenience with comfortable everyday living.

Early viewing is highly recommended.

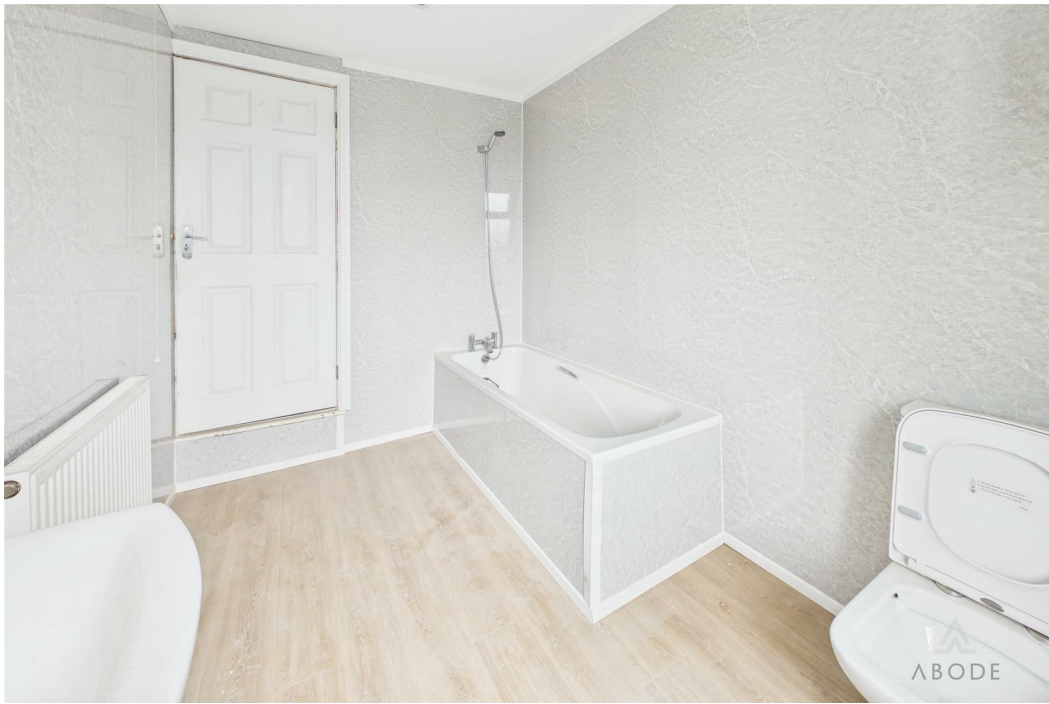




ABODE



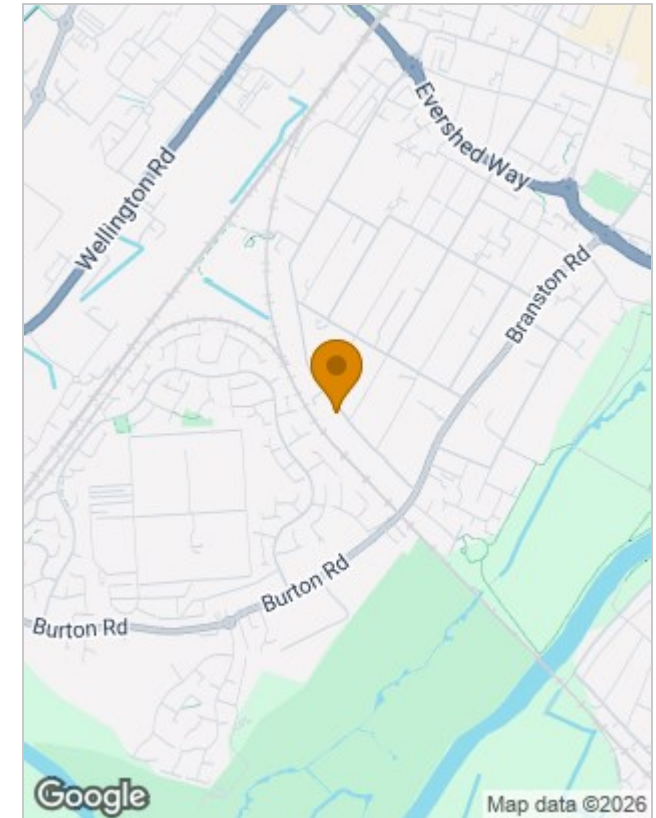
ABODE



Floor Plans



Location Map



Energy Performance Graph

Energy Efficiency Rating		
	Current	Potential
Very energy efficient - lower running costs		
(92 plus) A		
(81-91) B		
(69-80) C		
(55-68) D		
(39-54) E		
(21-38) F		
(1-20) G		
Not energy efficient - higher running costs		
England & Wales	EU Directive 2002/91/EC	

Please contact our Burton Lettings Office on 01283 845888 if you wish to arrange a viewing appointment for this property or require further information.

The particulars are set out as a general outline only for the guidance of intended purchasers or lessees, and do not constitute, any part of a contract. Nothing in these particulars shall be deemed to be a statement that the property is in good structural condition or otherwise nor that any of the services, appliances, equipment or facilities are in good working order. Purchasers should satisfy themselves of this prior to purchasing.

102 High Street, Burton-On-Trent, Staffordshire, DE14 1LJ
Tel: 01283 845888 Email: lettings@abodemidlands.co.uk <https://www.abodemidlands.co.uk>