





**** STUNNING POSITION AND A DOUBLE BRICK CARPORT TO THE REAR
**** Impressive three storey, four bedroom semi detached property. Benefitting from upvc double glazed windows and a gas heating system, in brief the property offers a hall, guest cloakroom, fitted kitchen diner and a lounge with doors onto the garden. The first floor offers three bedrooms and a family bathroom and the second floor offers a master bedroom with dressing room and an en suite shower room. Enclosed rear garden and a brick double carport and storage area.



HALL

Entrance door into the hall with stairs to the first floor, storage cupboard and radiator and door to -

KITCHEN DINER

Fitted wall mounted, base and drawer units with work surfaces and a sink and drainer unit. Fitted electric double oven, five ring gas hob, integrated fridge freezer, dishwasher and space for a washing machine. Upvc double glazed window to the front and a radiator.

LOUNGE

Upvc double glazed windows and doors onto the garden and a two radiators.

FIRST FLOOR LANDING

Stairs to the first floor, airing cupboard and doors to -

BEDROOM

Upvc double glazed window and a radiator.

BEDROOM

Upvc double glazed window and a radiator.

BEDROOM

Upvc double glazed window and a radiator.

BATHROOM

Panel enclosed bath, enclosed shower, low flush wc, wash hand basin and a radiator.

SECOND FLOOR



MASTER BEDROOM

Upvc double glazed window and a radiator, arch to -

DRESSING ROOM

Fitted wardrobes.







EN SUITE

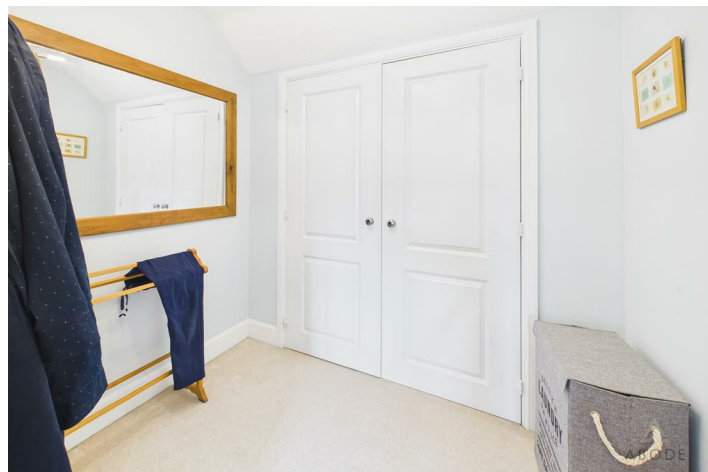
Double enclosed shower, low flush wc, wash hand basin, radiator and sky light window.

OUTSIDE

Enclosed rear garden with paved and slate areas, shrubs and bushes.

Rear brick double car port.



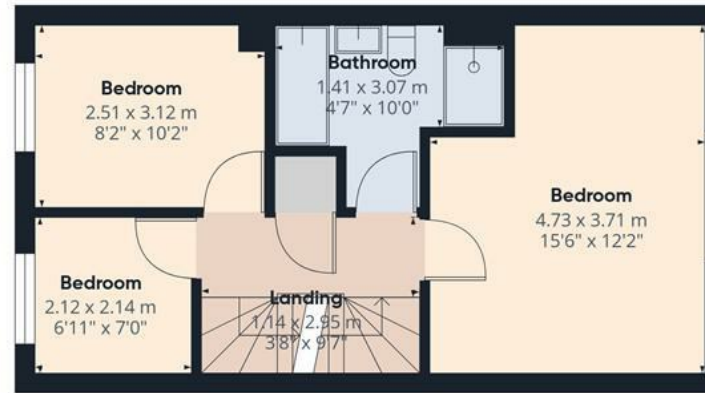








Floor 0 Building 1



Floor 1 Building 1

Approximate total area^m

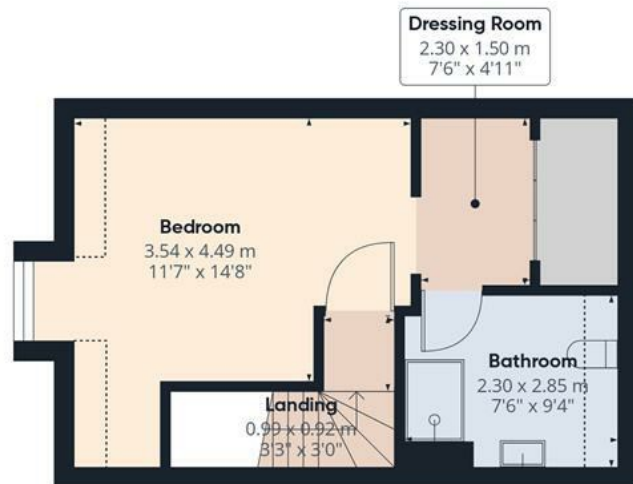
144 m²

1551 ft²

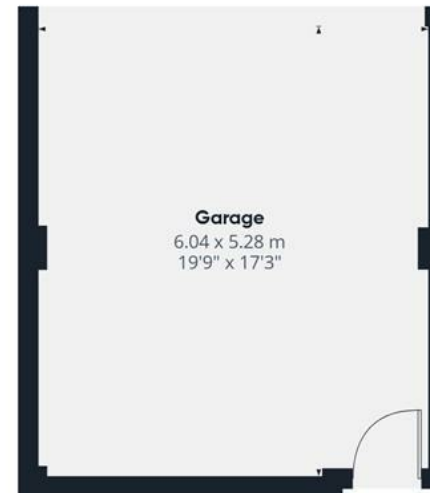
Reduced headroom

2.4 m²

26 ft²



Floor 2 Building 1



Floor 0 Building 2

(1) Excluding balconies and terraces

Reduced headroom

Below 1.5 m/5 ft

Calculations reference the RICS IPMS 3C standard. Measurements are approximate and not to scale. This floor plan is intended for illustration only.

GIRAFFE360

