





The concept of The Aldersley is clear, to deliver a stylishly crafted home designed for living. Comfort, enjoyment and social interaction is the mantra of this turnkey property, allowing you to get on and live life. Embedded within an exclusive development of sixteen luxury homes in the heart of Findern, Oldfield combines exceptional semi-rural surroundings with accessibility. The residential enclave offers distinct styles of living in a collection of homes expertly designed and crafted by award winning builder Stanton Developments.

This striking 5 bedroom home with detached double garage and south facing garden, must be seen to be appreciated. The ground floor provides open plan, flexible living suited to a contemporary lifestyle. It's a space you would be proud to show friends and family. Our interior design team has worked tirelessly to marry a traditional material palette with the Farrow & Ball colour scheme. Seasoned craftsmanship compliments modern finishes such as Dekton worktops, electric car charger, HiB illuminated bathroom mirrors with integrated Bluetooth speakers, solar panels, Ring doorbell and ultra-fast broadband connectivity. Opportunities to secure a new home blending handcrafted character with modern day convenience are rare. Please contact us to arrange an appointment.



## KEY HIGHLIGHTS

### Key Highlights

- Highly desirable village location
- Landscaped south facing garden
- Magnet Brunswick kitchen
- LVT to ground floor
- Carpeted throughout
- Integrated smart features
- Detached double garage
- 10 year warranty
- A-rated home EPC, low running costs

## HALL

Entrance door into the hall with stairs to the first floor, radiator, storage cupboard and doors to -

## CLOAKROOM

Low flush wc, wash hand basin and a chrome heated towel radiator.

## LOUNGE

Upvc double glazed window to the front and two radiators.

## FAMILY ROOM/STUDY

Radiator and upvc double glazed window.

## OPEN PLAN LIVING & DINING KITCHEN

Impressive space offering a high specification kitchen with an island, built in appliances, upvc double glazed window and doors onto the garden.

## UTILITY ROOM

Fitted units, work surfaces and appliance spaces, radiator and a door to the garden.

## FIRST FLOOR LANDING

Stairs to the second floor, radiator and doors to -



## MASTER BEDROOM

Upvc double glazed window, radiator and a door to the dressing room and en suite.

## DRESSING ROOM

Upvc double glazed window and radiator.

## EN SUITE

Bath and an enclosed shower, low flush wc, wash hand basin, chrome heated towel radiator, fitted mirror with touch light and upvc double glazed window.







### **BEDROOM**

Upvc double glazed window and a radiator.

### **BEDROOM**

Upvc double glazed window and a radiator.

### **BATHROOM**

Bath and an enclosed shower, low flush wc, wash hand basin, chrome heated towel radiator, fitted mirror with touch light and upvc double glazed window.

### **SECOND FLOORING LANDING**

Doors to -

### **BEDROOM**

Sky light windows and radiator.

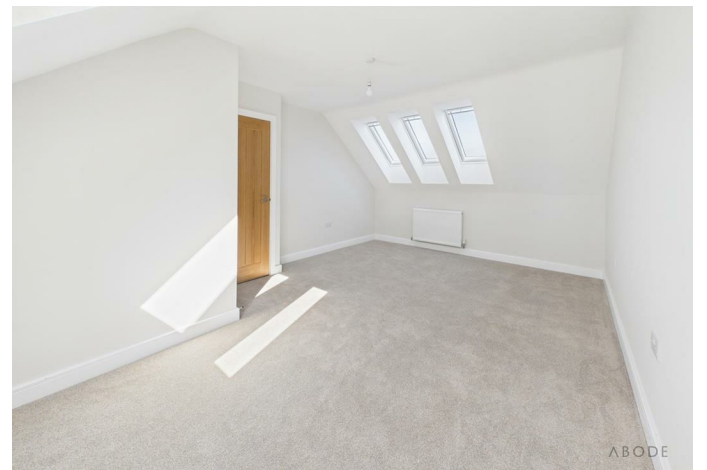
### **BEDROOM**

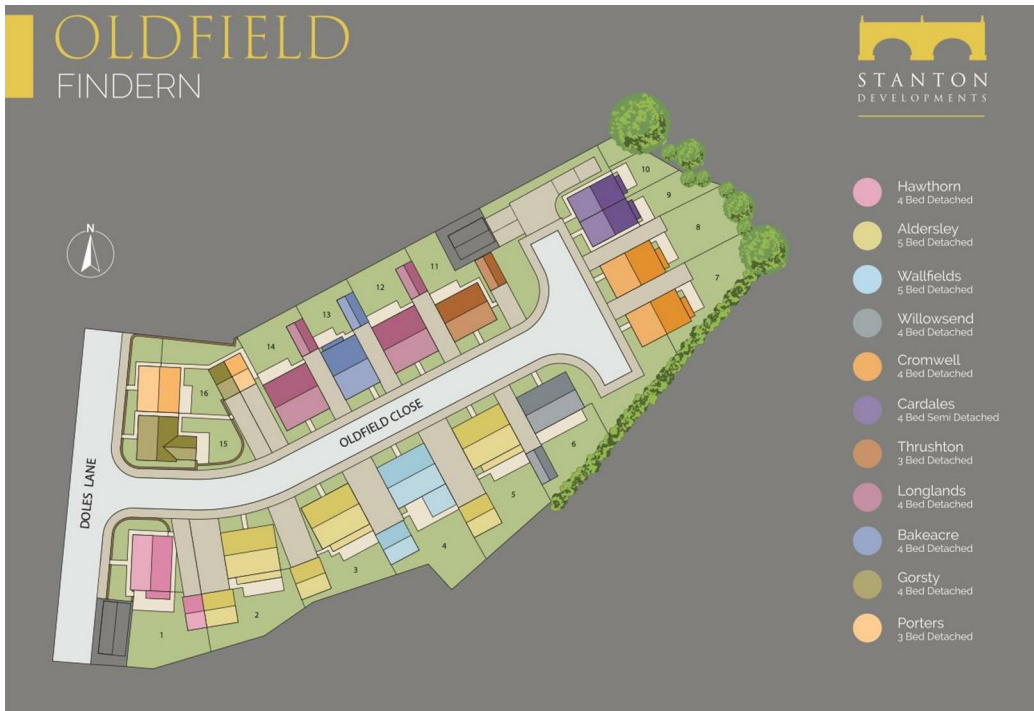
Sky light windows and radiator.

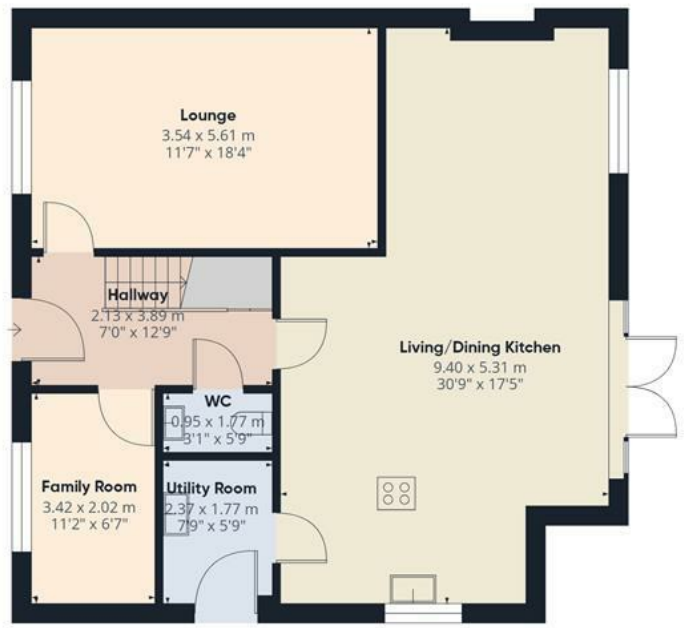
### **SHOWER ROOM**

Enclosed shower, wash hand basin, low flush wc, chrome heated towel radiator and sky light window.

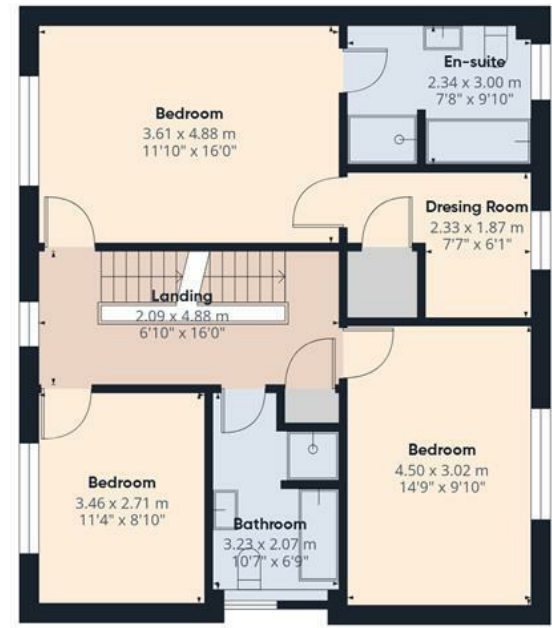




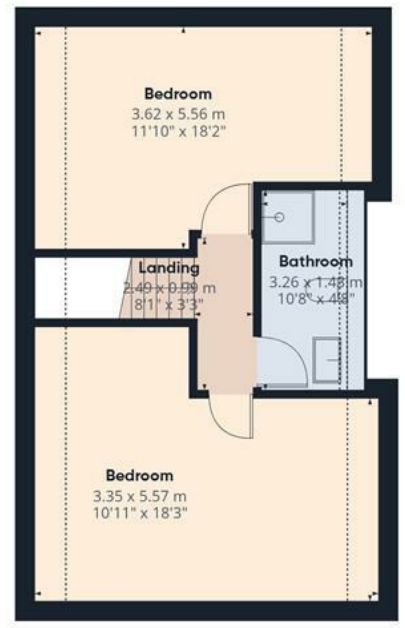




Floor 0



Floor 1



Floor 2



**Approximate total area<sup>m</sup>**  
 200 m<sup>2</sup>  
 2151 ft<sup>2</sup>

**Reduced headroom**  
 7.2 m<sup>2</sup>  
 78 ft<sup>2</sup>

(1) Excluding balconies and terraces

Reduced headroom  
 Below 1.5 m/5 ft

Calculations reference the RICS IPMS 3C standard. Measurements are approximate and not to scale. This floor plan is intended for illustration only.

GIRAFFE360

