



3 Ashbrook Close Uttoxeter, Staffordshire, ST14 8UL

A well-presented modern two-bedroom mid-townhouse located on the popular "Bird Land" development in Uttoxeter. Ideally positioned for easy access to local amenities, major employers and transport links, the property benefits from driveway parking for two vehicles and an enclosed rear garden, making it an excellent home for first-time buyers, small families or investors. Offered for sale with no chain.

This well-presented modern mid-townhouse is situated on the sought-after "Bird Land" estate in Uttoxeter, offering convenient access to JCB, Alton Towers Resort, Uttoxeter Racecourse, and excellent road links to the A50, M1 and M6.

The accommodation briefly comprises a modern fitted kitchen with integrated oven, hob and extractor, and a spacious lounge overlooking the rear garden. To the first floor are two bedrooms, including a generous principal bedroom and a further single bedroom, along with a family bathroom fitted with a shower over the bath.

Offers In The Region Of £196,000

3 Ashbrook Close

Uttoxeter, Staffordshire, ST14 8UL



Entrance Hallway

Kitchen

Lounge

Landing

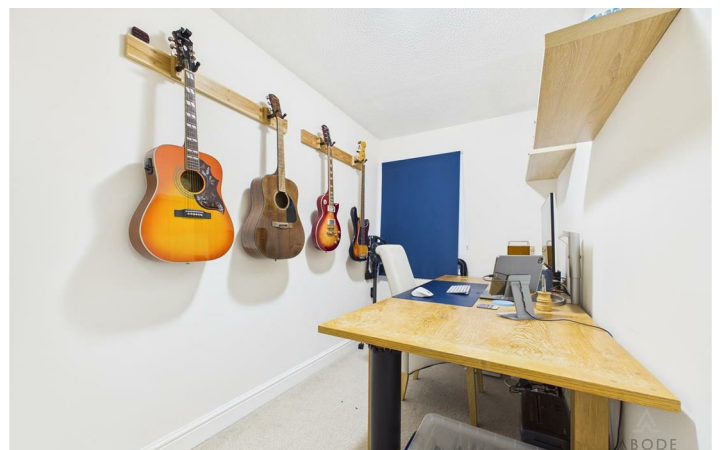
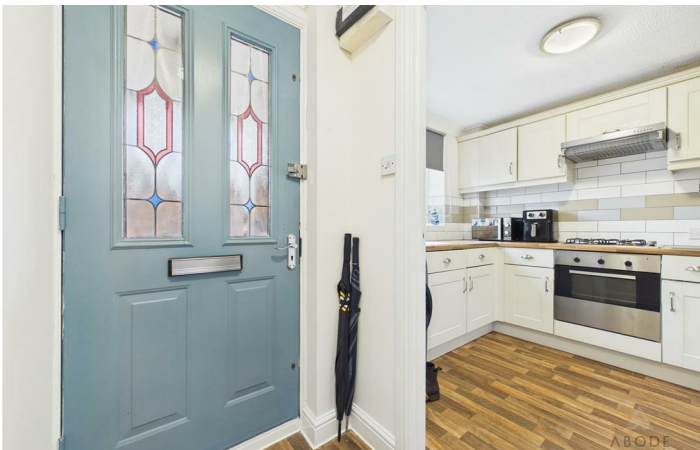
Bedroom One

Bedroom Two

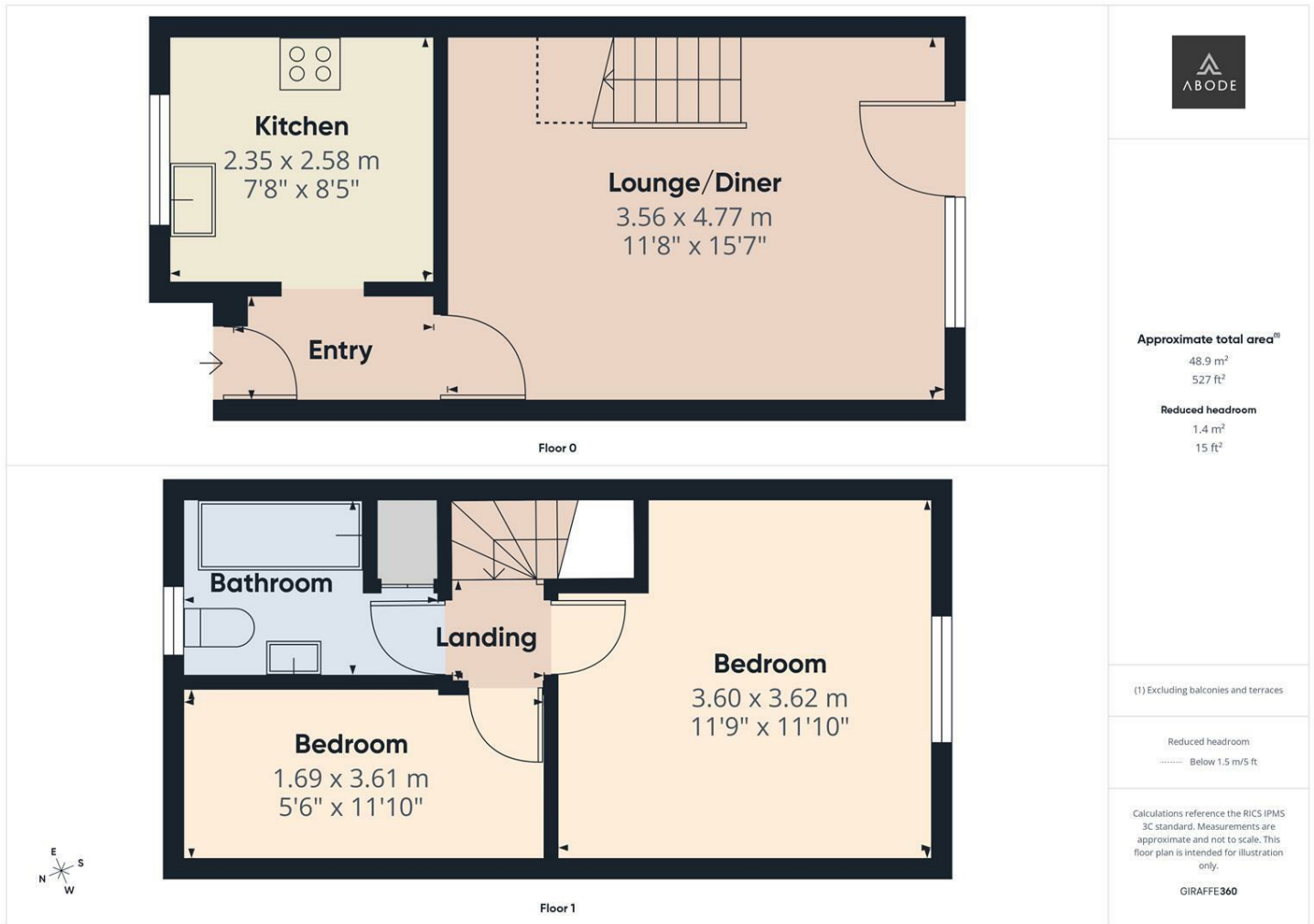
Bathroom



Directions



Floor Plan



These particulars, whilst believed to be accurate are set out as a general outline only for guidance and do not constitute any part of an offer or contract. Intending purchasers should not rely on them as statements of representation of fact, but must satisfy themselves by inspection or otherwise as to their accuracy. No person in this firm's employment has the authority to make or give any representation or warranty in respect of the property.

