





**** WELL PRESENTED
FAMILY HOME WITH A
GOOD SIZE GARDEN ****
The property benefits from a
gas central heating system
and upvc double glazed
windows. In brief the
property offers a hall with
storage cupboard, lounge
diner and a kitchen diner
with door onto the garden.
Three first floor bedrooms
and a family bathroom. Rear
garden and off road
parking.



HALL

Entrance door into the hall with stairs to the first floor, storage cupboard and doors to -

LOUNGE

Upvc double glazed windows to the front and rear and a radiator.

KITCHEN DINER

Fitted wall mounted, base and drawer units with work surfaces and a sink and drainer unit. Fitted electric oven and gas hob, appliance spaces, upvc double glazed windows to the front and rear elevations and a door to the garden.

FIRST FLOOR LANDING

Upvc double glazed window and doors to -

BEDROOM 1

Upvc double glazed windows to the front and rear elevations and a radiator.

BEDROOM 2

Upvc double glazed window and a radiator.

BEDROOM 3

Upvc double glazed window and a radiator.

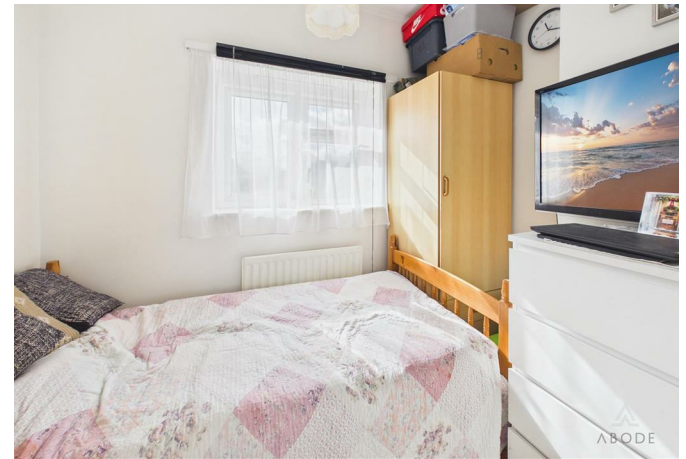
BATHROOM

Panel enclosed bath with a shower, low flush wc, wash hand basin, radiator and upvc double glazed window.

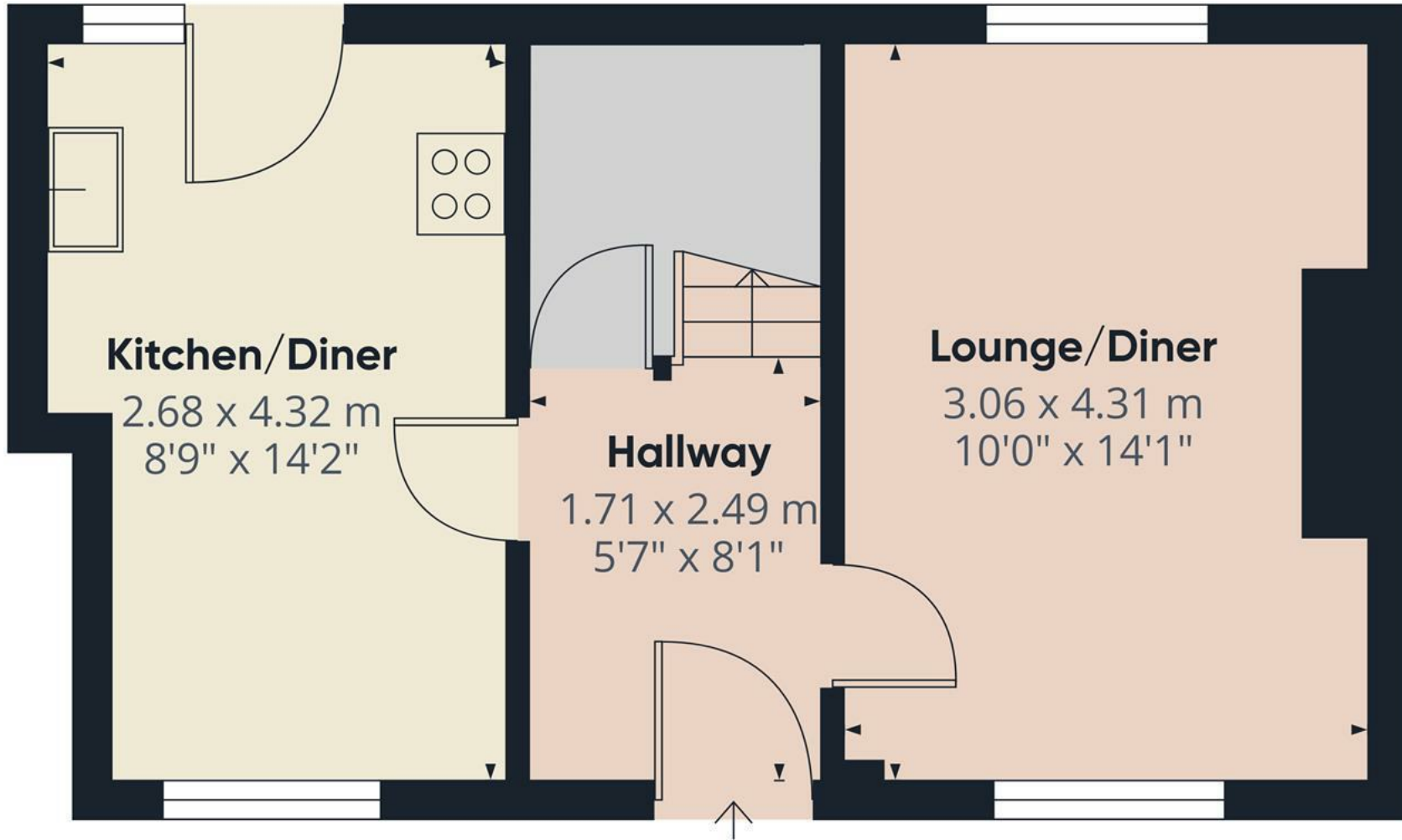
OUTSIDE

Front parking and a lawn. Enclosed rear garden with lawn and patio.









Approximate total area⁽¹⁾

31 m²
334 ft²

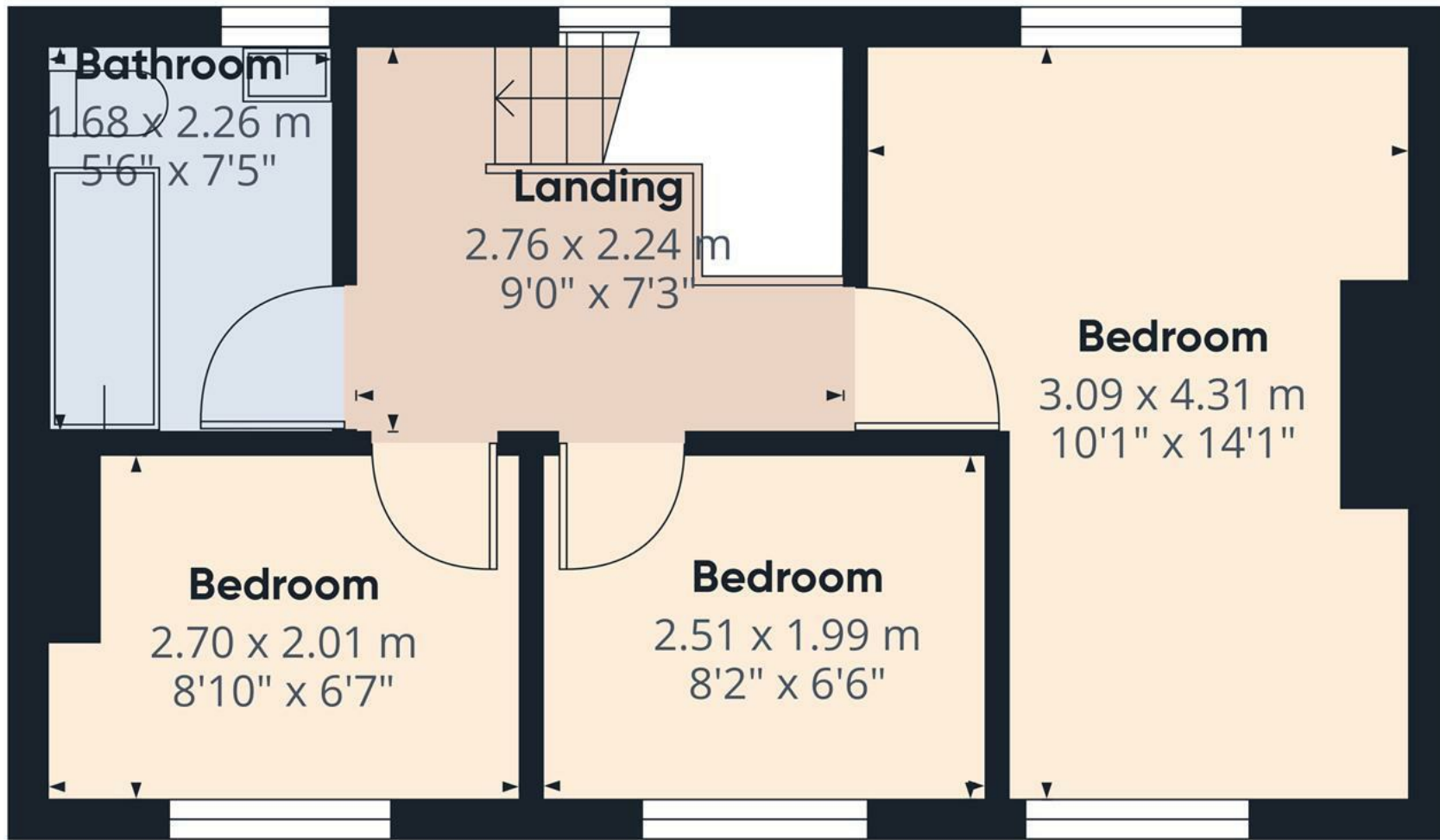
(1) Excluding balconies and terraces

Calculations reference the RICS IPMS 3C standard. Measurements are approximate and not to scale. This floor plan is intended for illustration only.

GIRAFFE360



Floor 0



Approximate total area⁽¹⁾

29.4 m²
317 ft²

(1) Excluding balconies and terraces

Calculations reference the RICS IPMS 3C standard. Measurements are approximate and not to scale. This floor plan is intended for illustration only.

GIRAFFE360



Floor 1

