

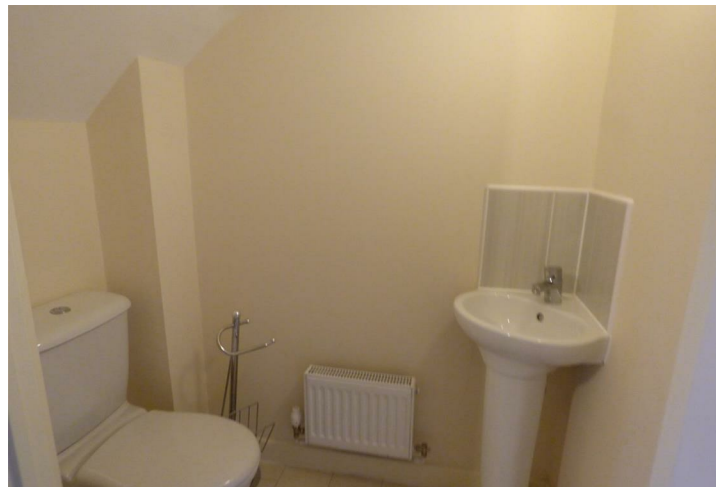




*** SELLING WITH TENANT IN SITU ***

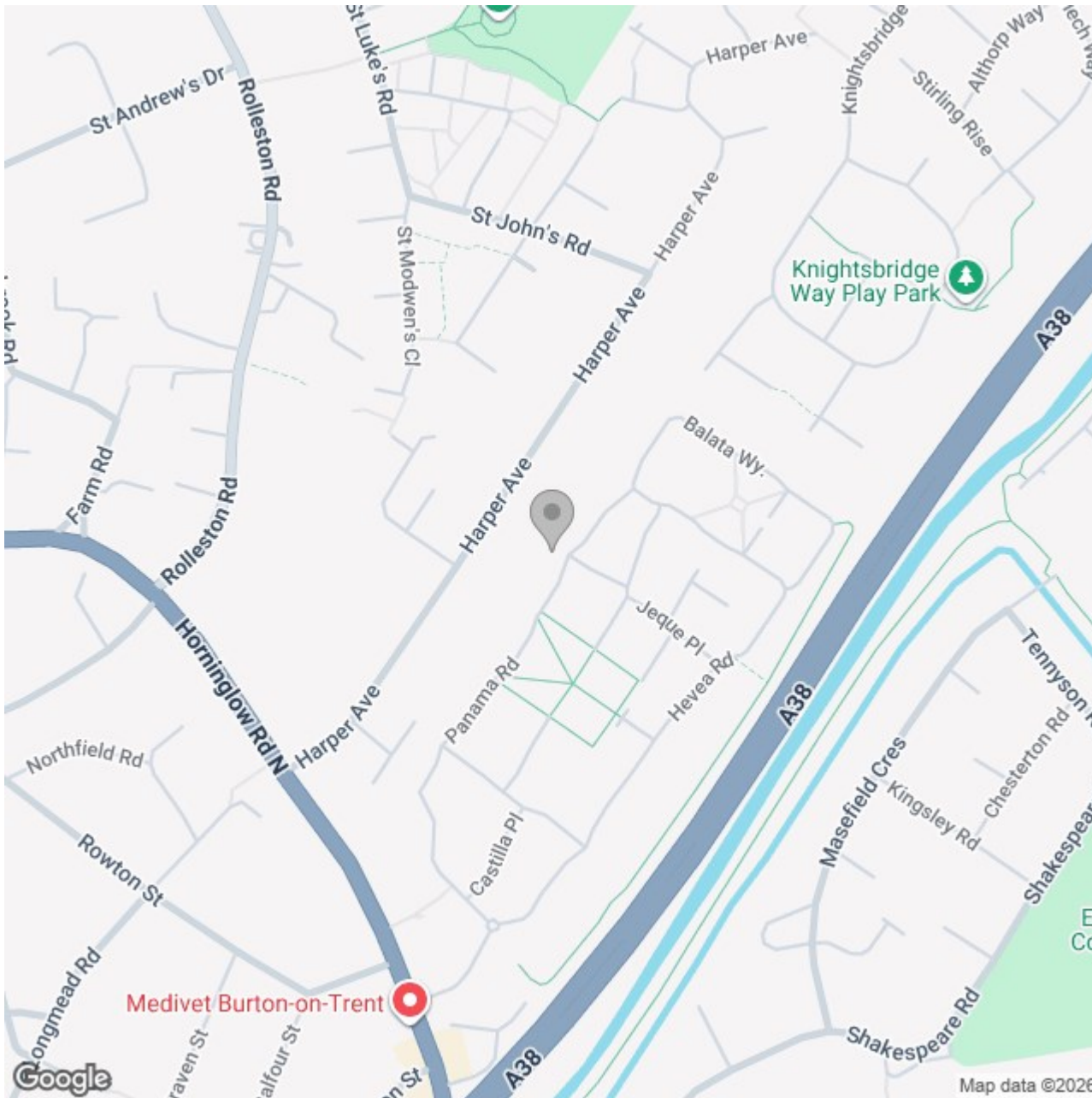
ABODE are pleased to offer this modern three storey, three bedroom town house situated on the edge of Burton Town Centre.

The property comprises of hallway, cloakroom and third bedroom to the ground floor, the first floor comprises of living accommodation with lounge/diner, fitted kitchen, second floor two further bedrooms, ensuite shower room and family bathroom. Rear garden, car port and extra parking to the rear.









Energy Efficiency Rating

	Current	Potential
Very energy efficient - lower running costs		
(92 plus) A		
(81-91) B		88
(69-80) C	77	
(55-68) D		
(39-54) E		
(21-38) F		
(1-20) G		
Not energy efficient - higher running costs		
England & Wales	EU Directive 2002/91/EC	