





Offered for sale with no upward chain stands this modern two-bedroom mid-townhouse presents an excellent opportunity for both first-time buyers and investors alike.

In brief the gas centrally heated and double glazed accommodation comprises of cloakroom, fitted kitchen and lounge overlooking the rear garden.

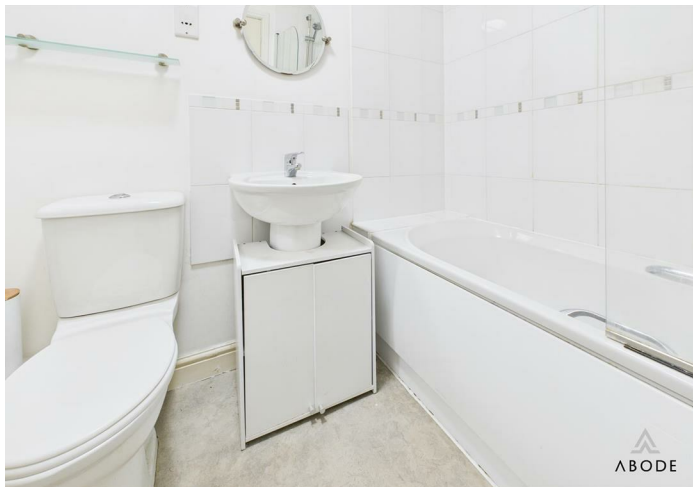
The first floor boasts two generously sized double bedrooms and family bathroom.

This property comes with the added benefit of allocated parking and enclosed rear garden.

Viewing is strictly by appointment only.

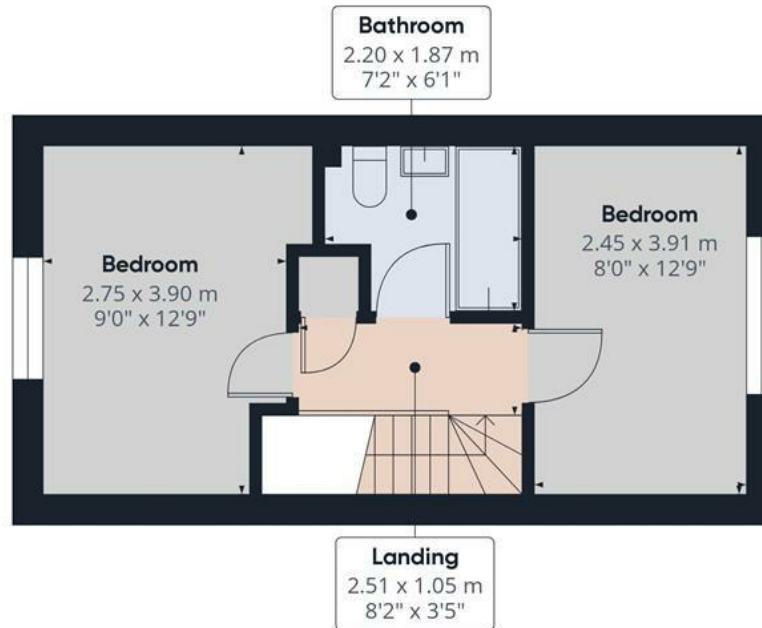








Floor 0



Floor 1

Approximate total area⁽¹⁾

57.33 m²
617.1 ft²

Reduced headroom

0.62 m²
6.67 ft²

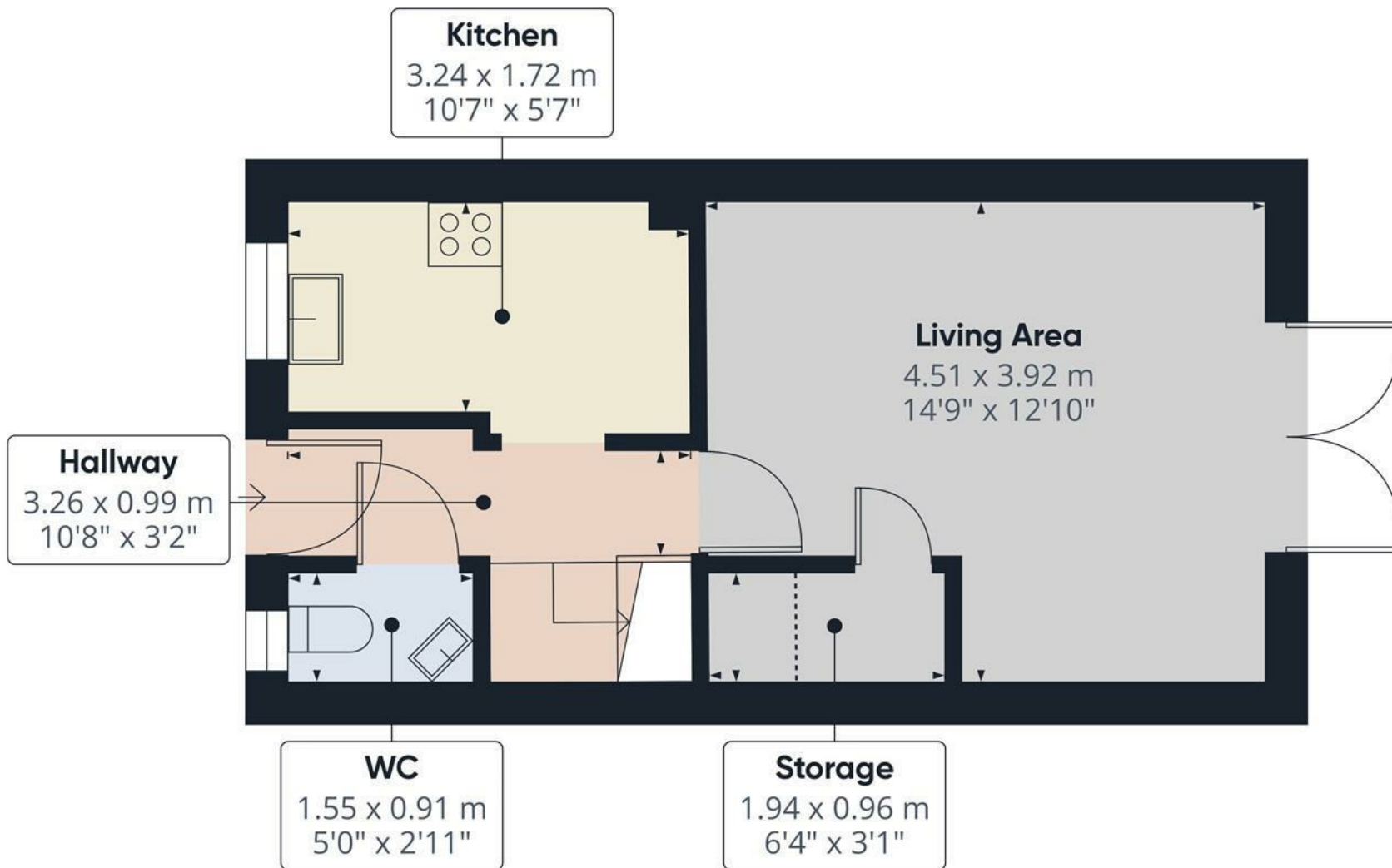
(1) Excluding balconies and terraces

Reduced headroom
..... Below 1.5 m/5 ft

While every attempt has been made to ensure accuracy, all measurements are approximate, not to scale. This floor plan is for illustrative purposes only.

Calculations are based on RICS IPMS 3C standard.

GIRAFFE360



Approximate total area⁽¹⁾

30.28 m²
325.94 ft²

Reduced headroom

0.62 m²
6.67 ft²

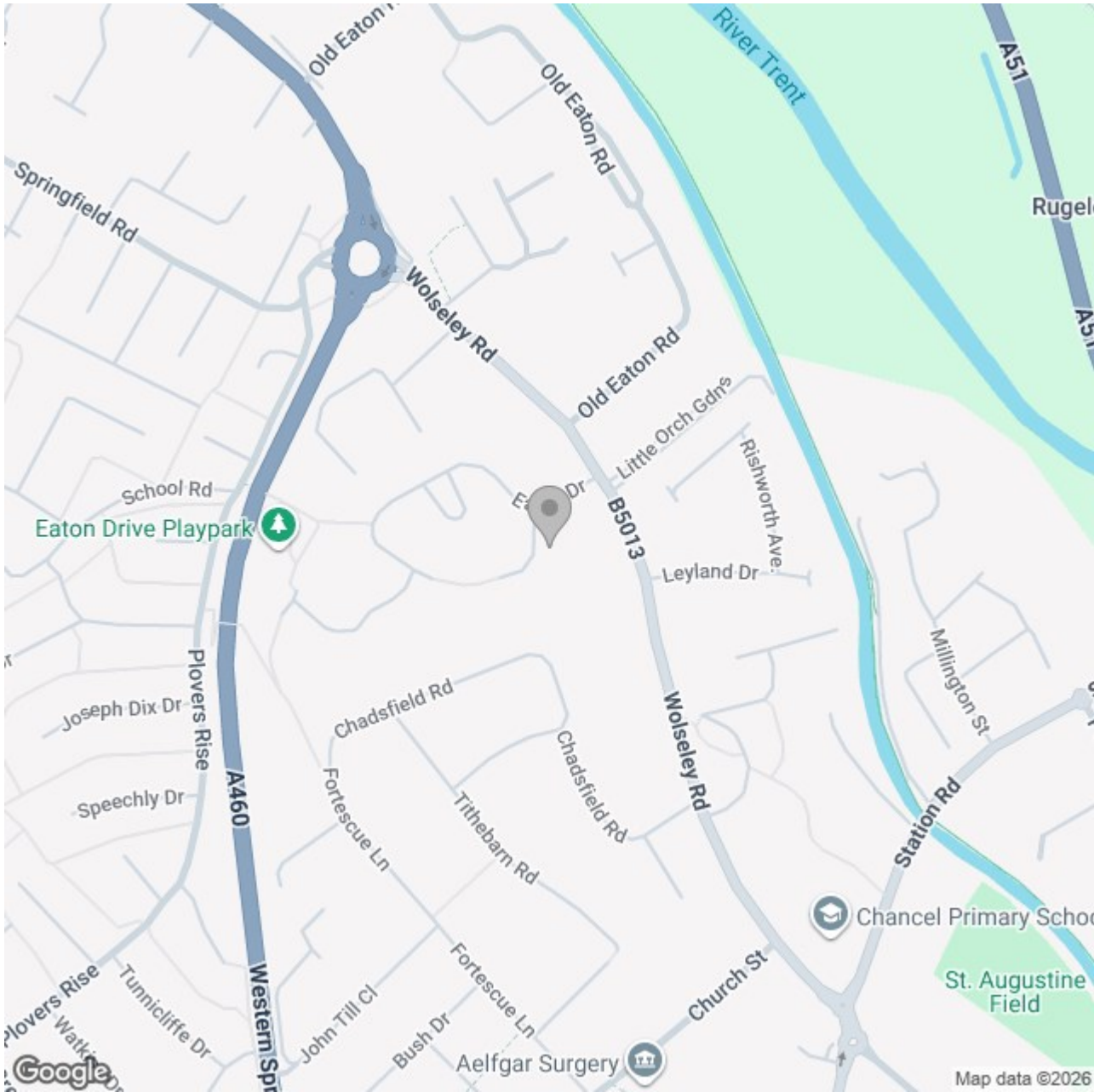
(1) Excluding balconies and terraces

Reduced headroom
..... Below 1.5 m/5 ft

While every attempt has been made to ensure accuracy, all measurements are approximate, not to scale. This floor plan is for illustrative purposes only.

Calculations are based on RICS IPMS 3C standard.

GIRAFFE360



Energy Efficiency Rating

	Current	Potential
Very energy efficient - lower running costs		
(92 plus) A		
(81-91) B		89
(69-80) C	75	
(55-68) D		
(39-54) E		
(21-38) F		
(1-20) G		
Not energy efficient - higher running costs		
England & Wales	EU Directive 2002/91/EC	