



40 Chatsworth Court

Park View, Ashbourne, DE6 1PF

**** TWO DOUBLE BEDROOMS **** SECOND FLOOR APARTMENT **** Located in the heart of the historic market town of Ashbourne offering great communal and social living space and gardens. This apartment is located on the second floor and can be accessed via the lift or the stair cases. Private entrance hall with two storage cupboards, lounge diner and a fitted kitchen, two double bedrooms and a shower room with double shower. Chatsworth court offers parking and well maintained gardens.

£140,000

40 Chatsworth Court

Park View, Ashbourne, DE6 1PF



- SECOND FLOOR APARTMENT
- LOUNGE DINER
- COMMUNAL GARDENS & PARKING
- SOCIAL EVENT AND COFFEE MORNINGS
- LIFT ACCESS TO ALL FLOORS
- FITTED KITCHEN
- LAUNDRY ROOM
- TWO DOUBLE BEDROOMS
- SHOWER ROOM
- COMMUNAL SITTING ROOM

COMMUNAL AREAS

PRIVATE HALL

LOUNGE DINER

KITCHEN

BEDROOM 1

BEDROOM 2

SHOWER ROOM

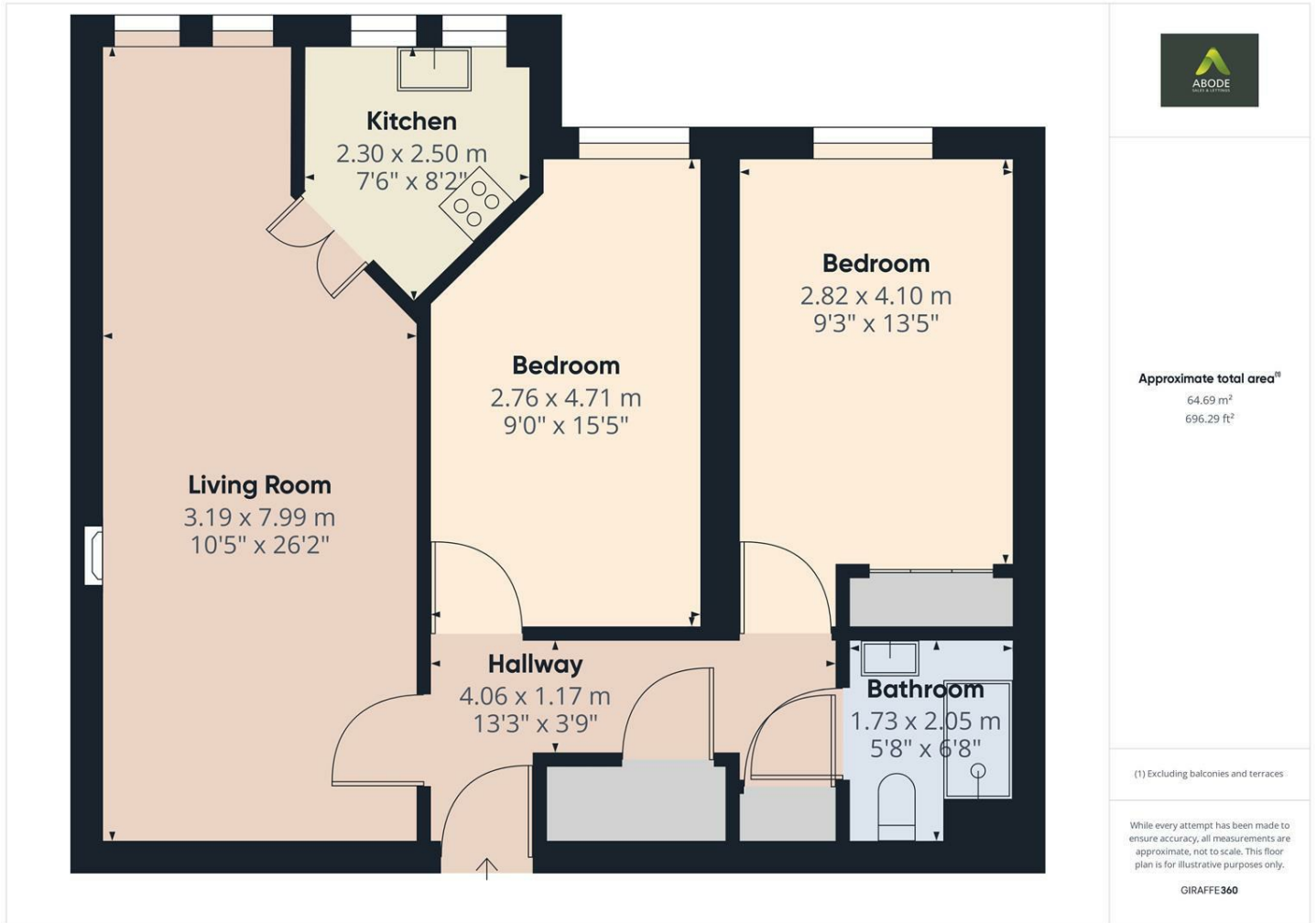
OUTSIDE



Directions



Floor Plan



These particulars, whilst believed to be accurate are set out as a general outline only for guidance and do not constitute any part of an offer or contract. Intending purchasers should not rely on them as statements of representation of fact, but must satisfy themselves by inspection or otherwise as to their accuracy. No person in this firm's employment has the authority to make or give any representation or warranty in respect of the property.

