



## The Mews The Mews

Alstonefield, Ashbourne, DE6 2FS

\*\*\*\* CHARACTER COTTAGE WITH STUNNING VIEWS \*\*\*\* FORMALLY A SUCCESSFUL HOLIDAY LET \*\*\*\*

Two bedroom cottage with a lounge diner and breakfast kitchen, two bedrooms, shower room, Parking and front drive.

£450,000

# The Mews The Mews

Alstonefield, Ashbourne, DE6 2FS



- DETACHED COTTAGE
- LOUNGE DINER
- DRIVE
- PORCH
- TWO BEDROOMS
- STUNNING VIEWS
- BREAKFAST KITCHEN
- BATHROOM
- VIEWINGS BY APPOINTMENT ONLY

## SIDE PORCH

17' x 3'6 (5.18m x 1.07m)

## BREAKFAST KITCHEN

14'6 x 9'10 (4.42m x 3.00m)

## LOUNGE DINER

20'7 x 15'2 (6.27m x 4.62m)

## FIRST FLOOR LANDING

## BEDROOM

15'9 x 9'9 (4.80m x 2.97m)

## BEDROOM

11'10 x 8'11 (3.61m x 2.72m)

## SHOWER ROOM

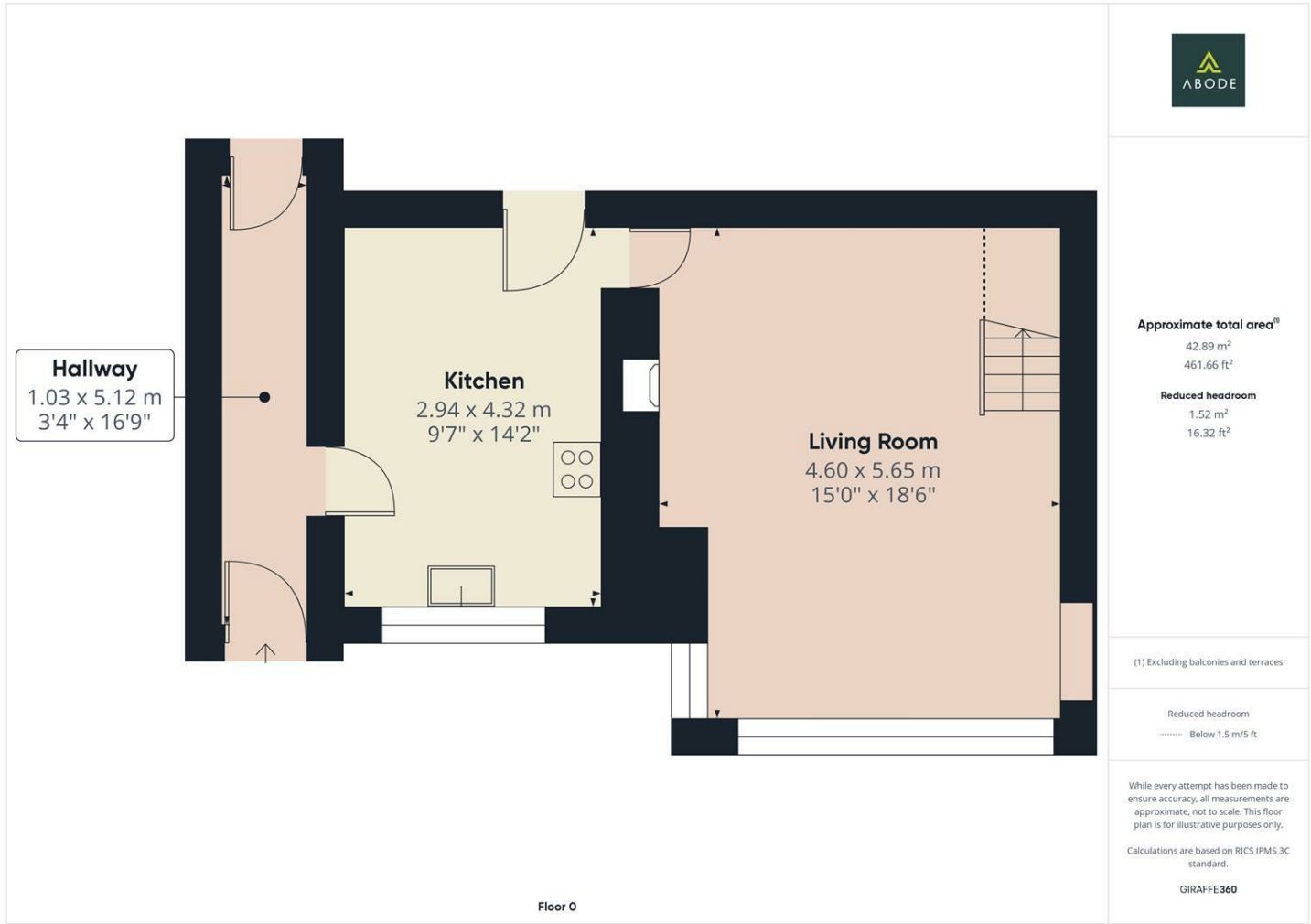
## NOTE



Directions



Floor Plan



These particulars, whilst believed to be accurate are set out as a general outline only for guidance and do not constitute any part of an offer or contract. Intending purchasers should not rely on them as statements of representation of fact, but must satisfy themselves by inspection or otherwise as to their accuracy. No person in this firms employment has the authority to make or give any representation or warranty in respect of the property.

| Energy Efficiency Rating                    |                         |           |
|---|-------------------------|-----------|
|   | Current                 | Potential |
| Very energy efficient - lower running costs |                         |           |
| (92 plus) <b>A</b>                          |                         |           |
| (81-91) <b>B</b>                            |                         |           |
| (69-80) <b>C</b>                            |                         |           |
| (55-68) <b>D</b>                            |                         |           |
| (39-54) <b>E</b>                            |                         |           |
| (21-38) <b>F</b>                            |                         |           |
| (1-20) <b>G</b>                             |                         |           |
| Not energy efficient - higher running costs |                         |           |
| <b>England &amp; Wales</b>                  | EU Directive 2002/91/EC |           |