





**** IMMACULATE EXTENDED
DETACHED PROPERTY ****
PERFECT FAMILY HOME WITH
VERSATILE ACCOMMODATION

***** This well-presented
property offers a hall, guest
cloakroom, high specification
breakfast kitchen, lounge diner
and a sitting with bifold doors
onto the garden. Study/family
room and a utility room. Four
good sized bedrooms with
fitted wardrobes, master with
an en-suite shower room and a
family bathroom. Ample
parking to the front, enclosed
rear garden and a brick
store/workshop. INTERNAL
VIEWING IS HIGHLY
RECOMMENDED.



HALL

Entrance door into the hall with stairs to the first floor, radiator and doors to -

CLOAKROOM

Low flush wc, wash hand basin, radiator and upvc double glazed window.

LOUNGE DINER

Upvc double glazed bay window to the front, two radiators, door in to the kitchen and doors into the sitting room.

SITTING ROOM

Three sky light windows, two radiators, upvc double glazed window and bifold doors onto the garden.

KITCHEN

Fitted wall mounted, base and drawer units with Quartz work surfaces and a sink unit with mixer tap. Fitted electric oven and hob, fitted microwave oven, space for a fridge freezer and plumbing for a dishwasher. Breakfast bar, radiator, upvc double glazed window onto the garden, under stairs store cupboard and door to the rear hall.

REAR HALL

Door to the garden and doors to -

UTILITY ROOM

Fitted units and work surface, plumbing for a washing machine, appliance spaces, radiator and upvc double glazed window.

FAMILY ROOM/STUDY

Fitted storage, upvc double glazed window and a radiator.



ABODE

FIRST FLOOR LANDING

Doors to -

BEDROOM I

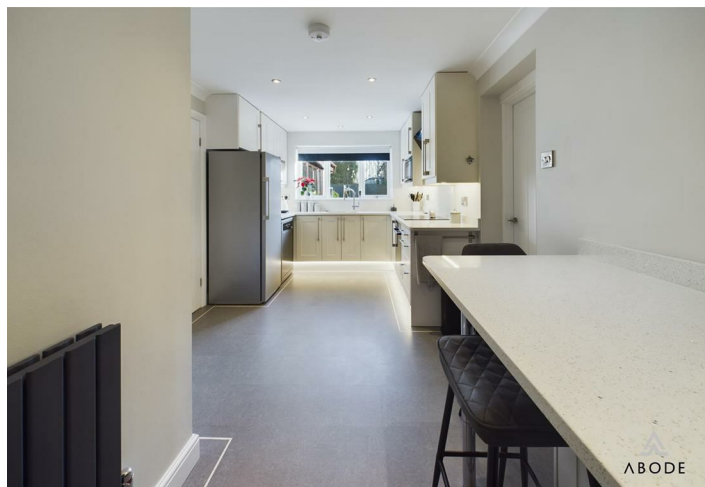
Two upvc double glazed windows, radiator, fitted wardrobes, radiator and door to -

EN SUITE

Enclosed shower, low flush wc, wash hand basin, chrome ladder style radiator.



ABODE





BEDROOM 2

Wardrobes, two upvc double glazed windows and a radiator.

BEDROOM 3

Wardrobes and drawers, radiator and upvc double glazed window.

BEDROOM 4

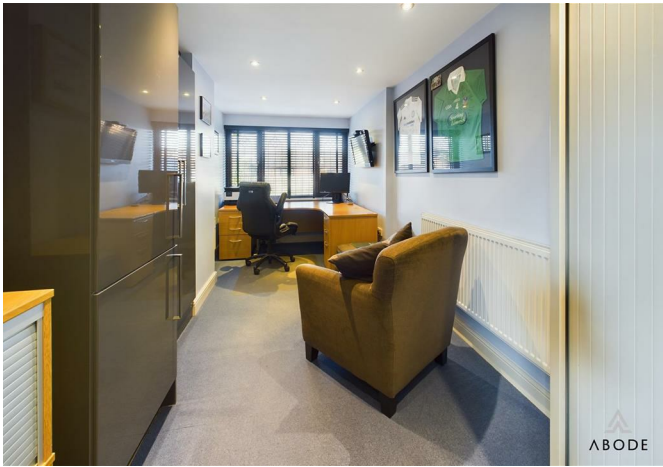
Fitted wardrobes, radiator and upvc double glazed window.

BATHROOM

Panel enclosed bath with a shower over, vanity sink unit with wash hand basin and storage under, low flush wc, radiator and a upvc double glazed window.

OUTSIDE

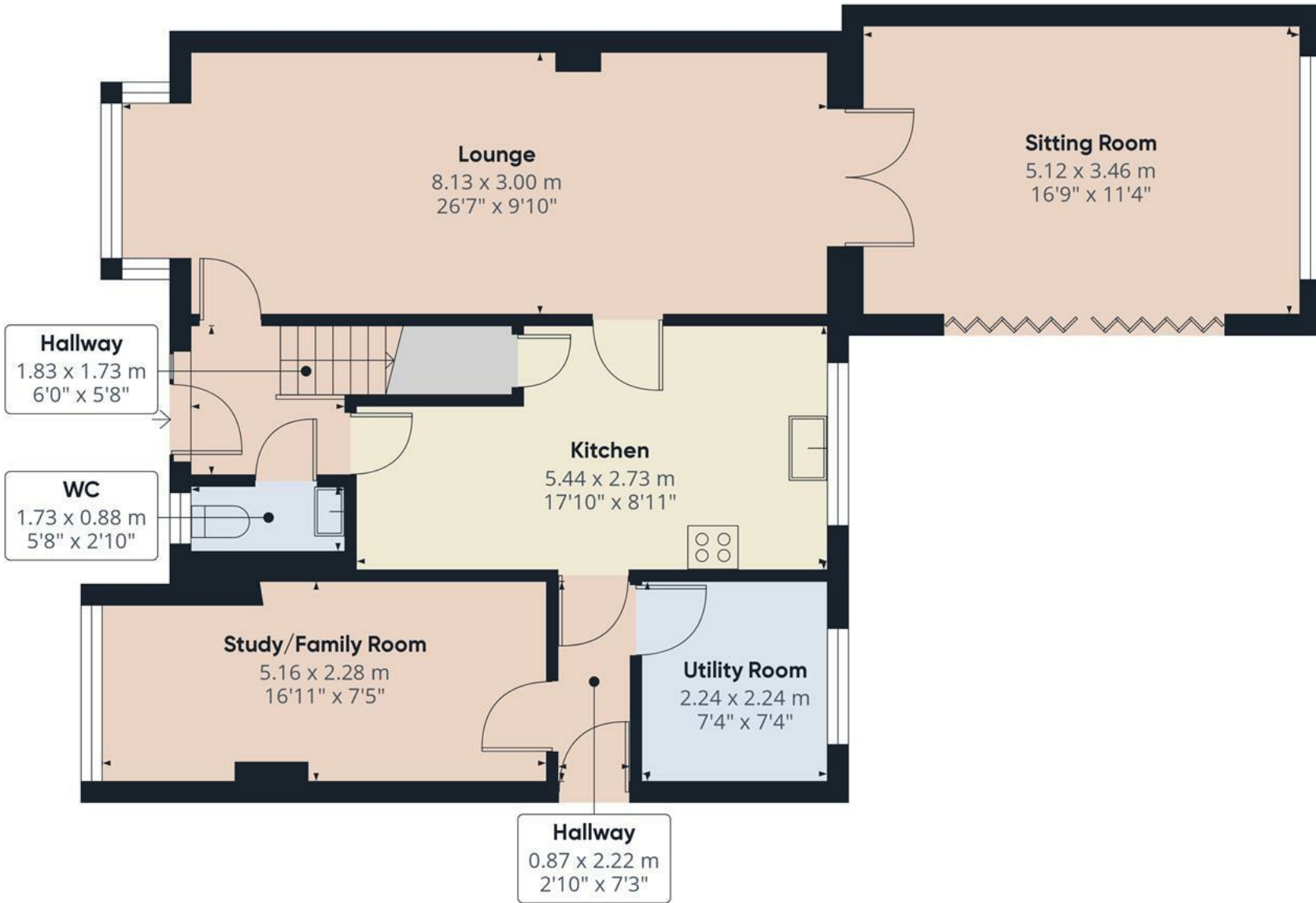
Block paved drive, side gated access to an enclosed rear garden offering a resin patio, artificial lawn and a brick store/workshop.











Approximate total area⁽¹⁾

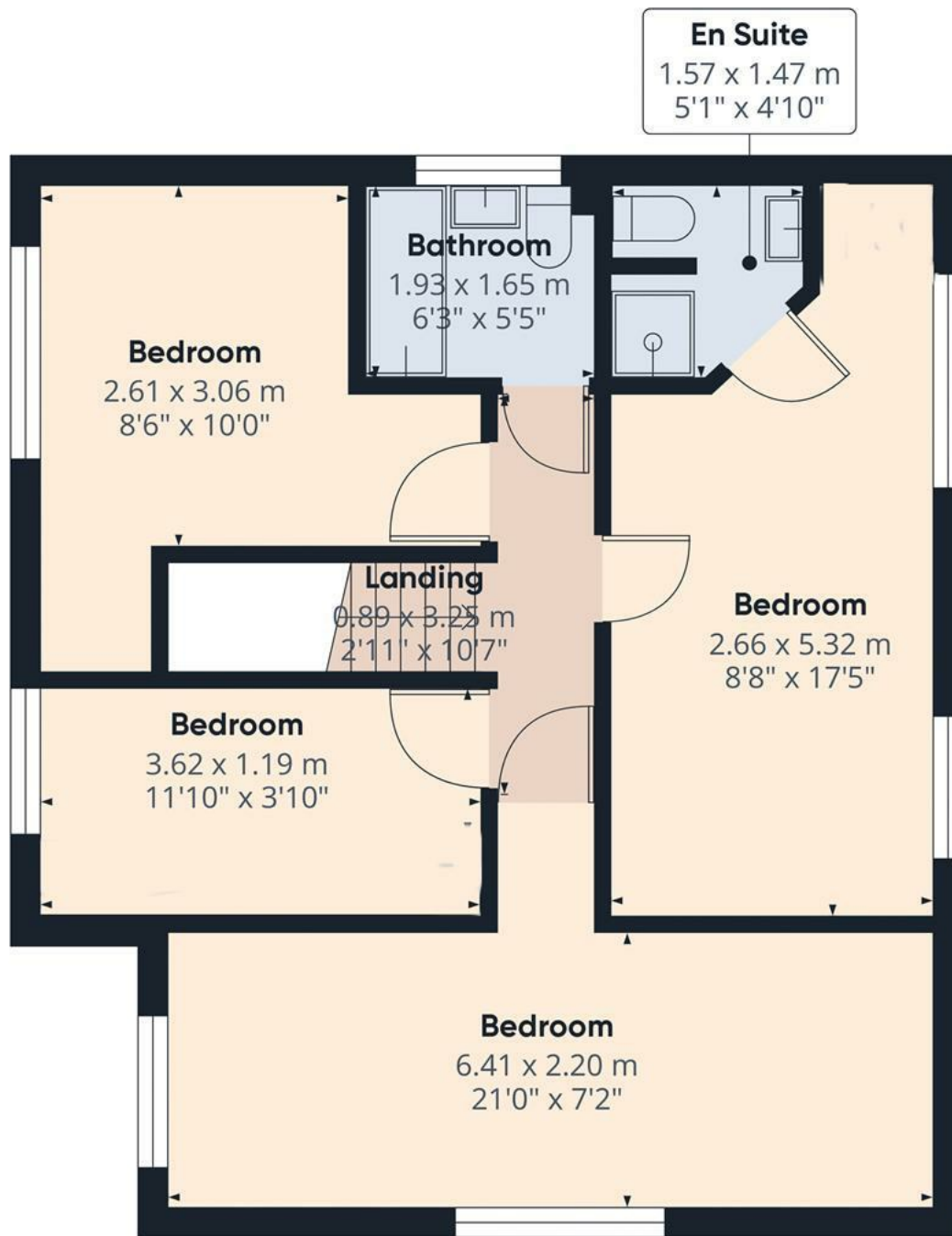
80.89 m²
870.68 ft²

(1) Excluding balconies and terraces

While every attempt has been made to ensure accuracy, all measurements are approximate, not to scale. This floor plan is for illustrative purposes only.

Calculations are based on RICS IPMS 3C standard.

GIRAFFE360



Floor 1

Approximate total area⁽¹⁾

53.59 m²
576.85 ft²

(1) Excluding balconies and terraces

While every attempt has been made to ensure accuracy, all measurements are approximate, not to scale. This floor plan is for illustrative purposes only.

Calculations are based on RICS IPMS 3C standard.

GIRAFFE360

