



ABODE
SALES & LETTINGS



**** GREAT POSITION WITH
AMPLE PARKING **** SOLAR
PANELS **** Well presented
four bedroom detached
property offering a hallway,
guest cloakroom, lounge
and a fitted dining kitchen
with built in appliances and
doors onto the garden. Four
first floor bedrooms and a
family bathroom.
Landscaped rear garden with
covered seating area, ample
parking and a single garage.
VIEWING IS HIGHLY
RECOMMENDED.



HALL

Entrance door into the hall with stairs to the first floor, radiator and doors to -

CLOAKROOM

Low flush wc, wash hand basin and a radiator.

LOUNGE

Two upvc double glazed windows and a radiator.

KITCHEN DINER

Fitted wall mounted, base and drawer units with work surfaces and a sink and drainer unit. Fitted electric double oven, induction hob and extractor. Integrated fridge freezer, washing machine and dishwasher. Upvc double glazed window and double doors onto the garden.

FIRST FLOOR LANDING

Loft access and doors to -

BEDROOM 1

Wardrobes with sliding mirror doors, upvc double glazed window and radiator.

BEDROOM 2

Upvc double glazed window and a radiator.

BEDROOM 3

Upvc double glazed window and a radiator.

BEDROOM 4

Upvc double glazed window and a radiator.



BATHROOM

Panel enclosed bath with a shower and shower screen, low flush wc, wash hand basin, radiator and upvc double glazed window.

OUTSIDE







Long drive and turning area, single garage with up and over door. Enclosed rear garden with artificial grass and a covered decked seating area. Paved area currently used for a hot tub. Solar panels on the southerly side of the property.

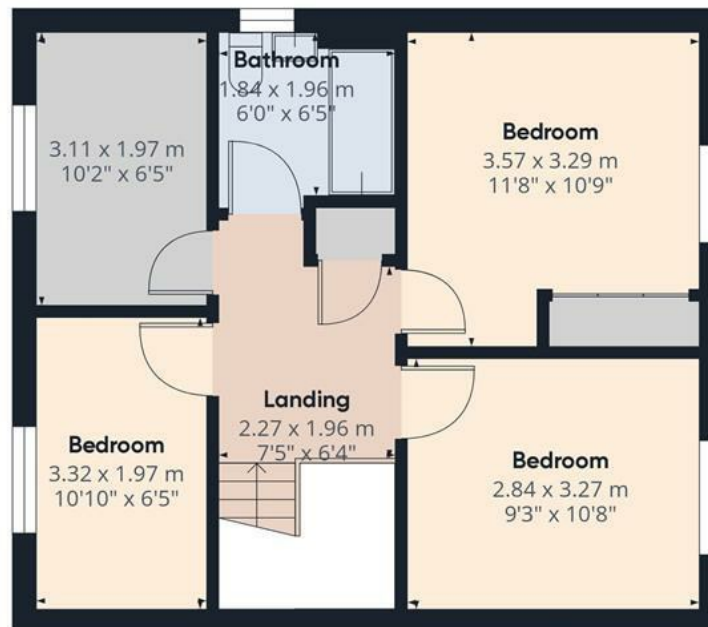




Floor 0

Approximate total area⁽¹⁾

89.96 m²
968.32 ft²



Floor 1

(1) Excluding balconies and terraces

While every attempt has been made to ensure accuracy, all measurements are approximate, not to scale. This floor plan is for illustrative purposes only.

Calculations are based on RICS IPMS 3C standard.

GIRAFFE360



Approximate total area⁽¹⁾

46.53 m²
500.84 ft²

(1) Excluding balconies and terraces

While every attempt has been made to ensure accuracy, all measurements are approximate, not to scale. This floor plan is for illustrative purposes only.

Calculations are based on RICS IPMS 3C standard.

GIRAFFE360

Floor 0

