

15 Fleet Street, Burton Upon Trent, DE14 3US

£775 PCM

 **ABODE**
SALES & LETTINGS



 **ABODE**
SALES & LETTINGS



ABODE Lettings are excited to present this newly built one-bedroom apartment, located on the second floor of a modern development. Designed with contemporary living in mind, this elegant home features an open-plan layout with high-end finishes throughout. The interiors are characterized by soft grey carpets, crisp white walls, and pristine woodwork, creating a fresh and stylish ambiance.

A key feature of the apartment is the sophisticated anthracite grey wooden internal doors, which add an element of elegance. The newly installed kitchen is fully equipped with sleek wall and base units, an integrated oven, hob, extractor fan, and washer-dryer. A freestanding fridge-freezer is also provided, ensuring full functionality.

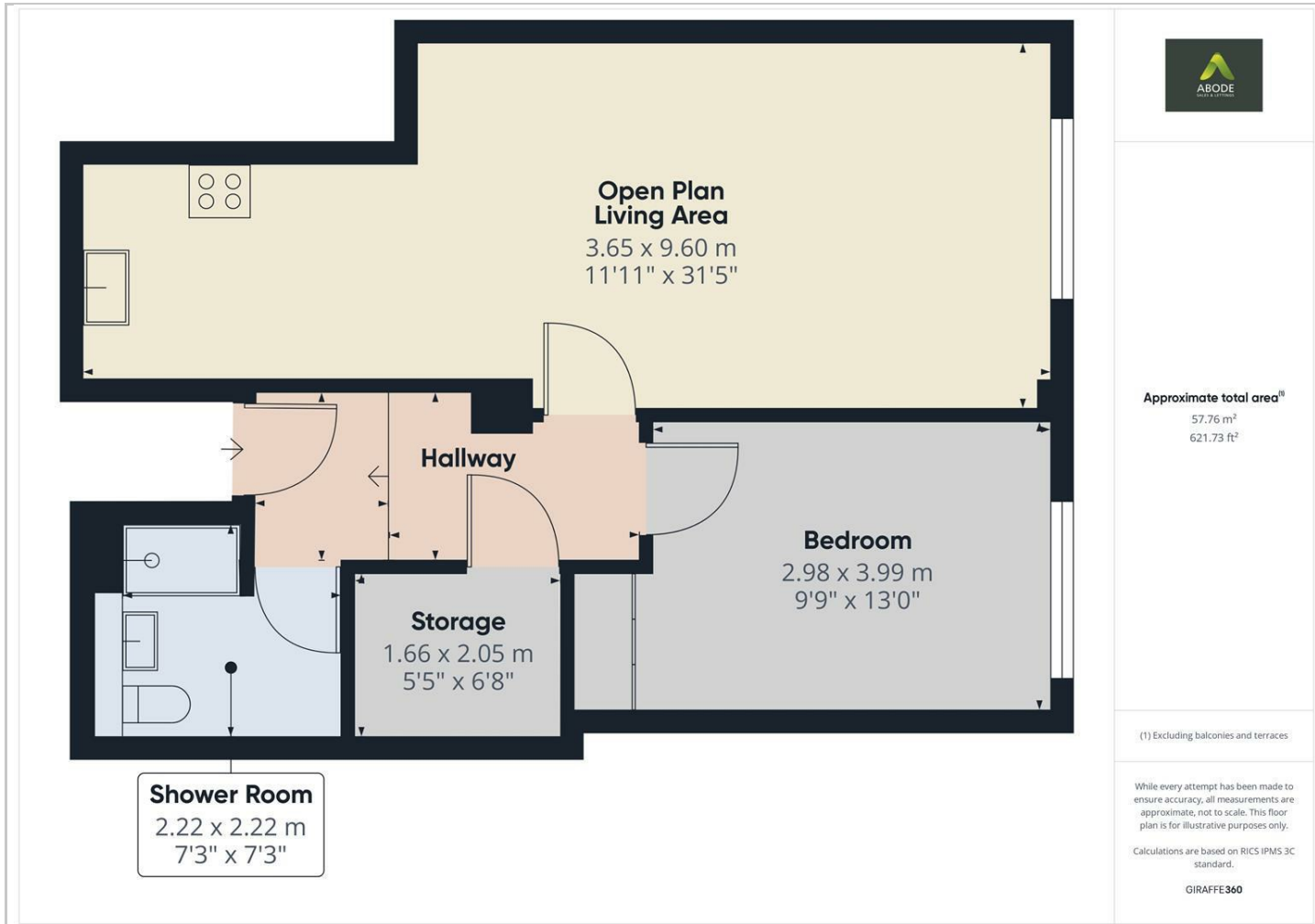
The spacious double bedroom comes with a built-in wardrobe featuring mirrored sliding doors, offering both style and ample storage space. Additional storage is available in a handy hallway cupboard.

The shower room is finished to an excellent standard, with a three-piece suite that includes a large double shower cubicle with an electric shower. The walls and floors are fully tiled in a luxurious white-and-grey marble effect, lending the space a refined feel.

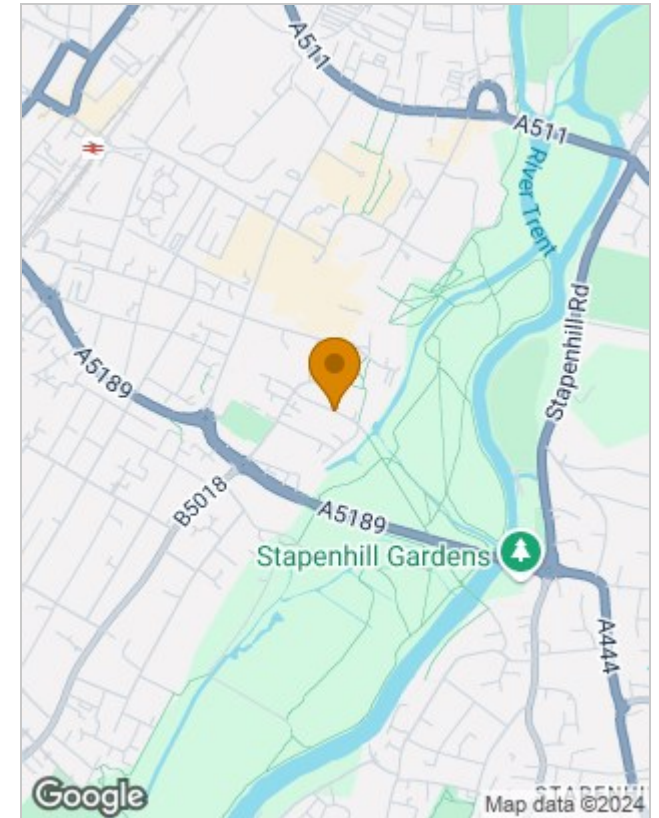




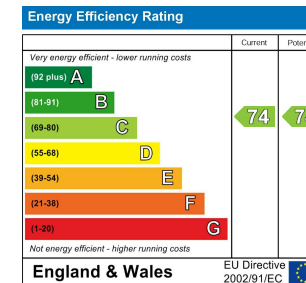
Floor Plans



Location Map



Energy Performance Graph



Please contact our Burton Lettings Office on 01283 845888 if you wish to arrange a viewing appointment for this property or require further information.

The particulars are set out as a general outline only for the guidance of intended purchasers or lessees, and do not constitute, any part of a contract. Nothing in these particulars shall be deemed to be a statement that the property is in good structural condition or otherwise nor that any of the services, appliances, equipment or facilities are in good working order. Purchasers should satisfy themselves of this prior to purchasing.