

35 Coppice Road, Burton Upon Trent, DE13 9GF

£1,050 PCM

 **ABODE**
SALES & LETTINGS





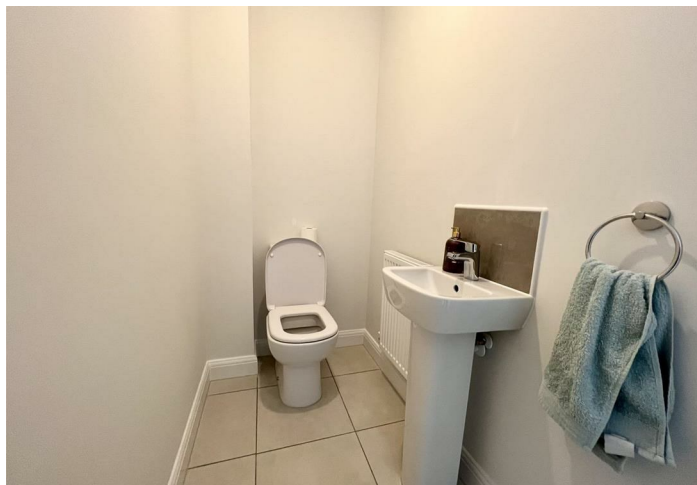
ABODE Lettings are pleased to offer for rental this modern bedroom three bedroom semi-detached family home, situated in Branston.

This is a rare opportunity to secure a lovely brand new family home in a much sought after location which offers superb local amenities including schooling, leisure activities and road links.

In brief, the accommodation provides - Large Kitchen/diner with a great selection of wall and base units and a selection of appliances and patio door leading to the rear. Good size lounge. Guest cloakroom with white suite.

The first floor provides three bedrooms, the master bedroom with a built in wardrobe and en-suite shower room. Further family bathroom with shower over the bath.

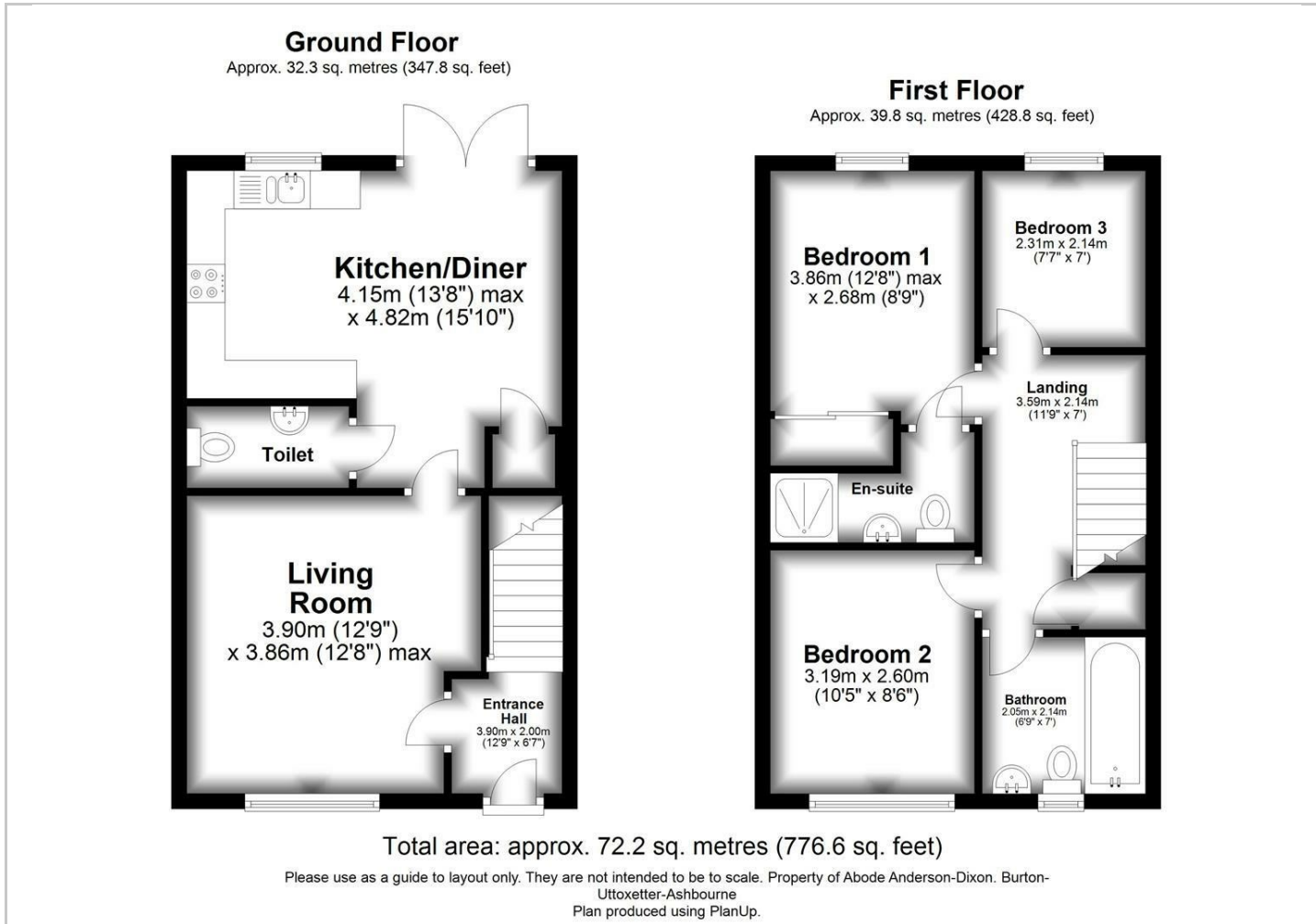
Off road parking for two/three cars to the side. Patio and lawn to complete the rear garden.



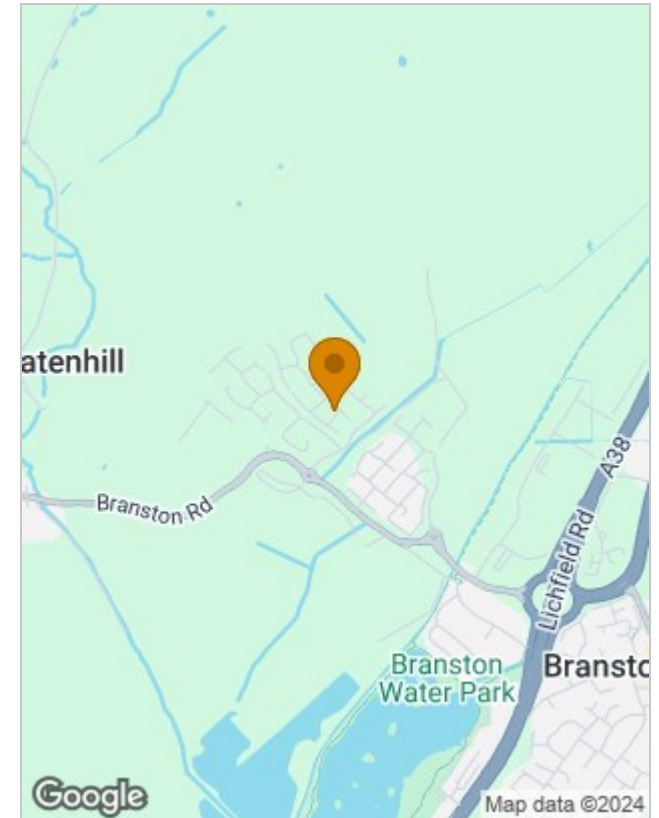




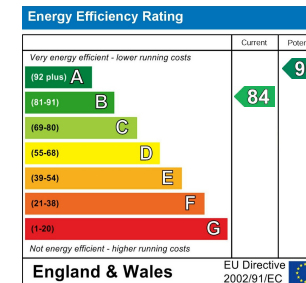
Floor Plans



Location Map



Energy Performance Graph



Please contact our Burton Lettings Office on 01283 845888 if you wish to arrange a viewing appointment for this property or require further information.

The particulars are set out as a general outline only for the guidance of intended purchasers or lessees, and do not constitute, any part of a contract. Nothing in these particulars shall be deemed to be a statement that the property is in good structural condition or otherwise nor that any of the services, appliances, equipment or facilities are in good working order. Purchasers should satisfy themselves of this prior to purchasing.