



9 Dover Road

, Burton-On-Trent, DE13 0TD

****THREE BEDROOM EXTENDED TRADITIONAL TERRACE**** A beautiful three bedroom traditional end of terrace home, having undergone considerable refurbishment with render externally, reclaimed roof and a superb fitted kitchen having solid oak work surfaces and integrated appliances. The accommodation in brief comprises to the ground floor: Dining room, living room, kitchen and WC/cloaks. The first floor offers two double bedrooms and a family bathroom. The master bedrooms concludes the second floor having useful eaves storage. Viewing is via appointment only through ABODE Estate Agents.

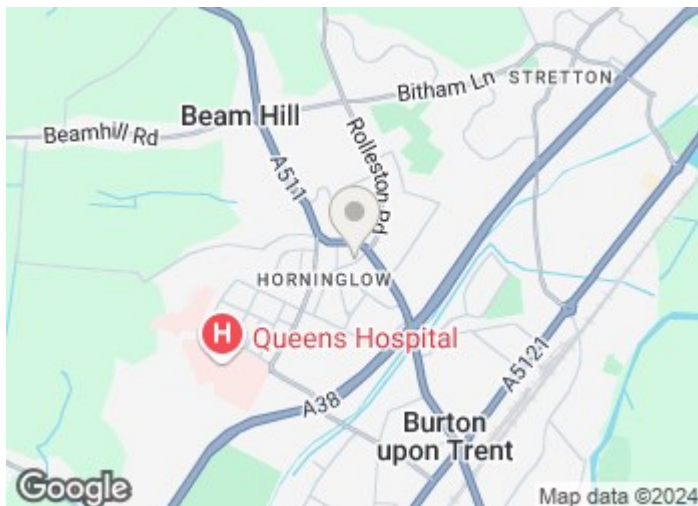
Asking Price £165,000

9 Dover Road

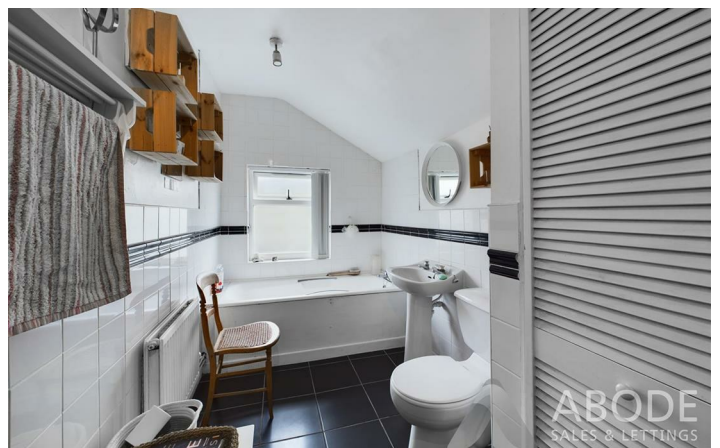
, Burton-On-Trent, DE13 0TD



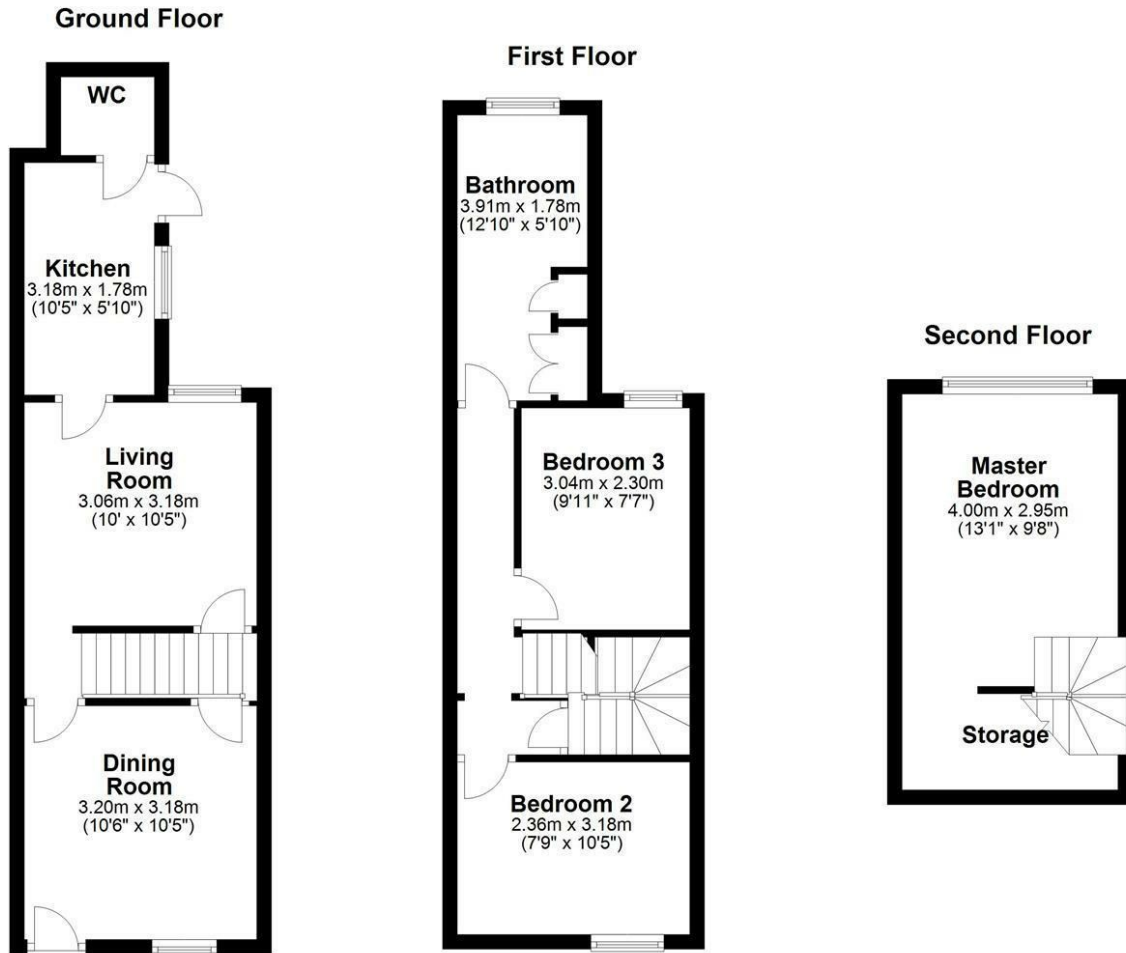
Accommodation



Directions



Floor Plan



Please use as a guide to layout only. They are not intended to be to scale. Property of Abode Anderson-Dixon, Burton-Uttoxetter-Ashbourne
Plan produced using PlanUp.

These particulars, whilst believed to be accurate are set out as a general outline only for guidance and do not constitute any part of an offer or contract. Intending purchasers should not rely on them as statements of representation of fact, but must satisfy themselves by inspection or otherwise as to their accuracy. No person in this firm's employment has the authority to make or give any representation or warranty in respect of the property.

1 Cross Street, Cheadle, Cheadle, ST10 1NP
Tel: 01538 750081 Email: ashbourne@abodemidlands.co.uk <https://www.abodemidlands.co.uk>

Energy Efficiency Rating		Current	Potential
Very energy efficient - lower running costs			100
(92 plus) A			
(81-91) B			
(69-80) C			
(55-68) D		64	
(39-54) E			
(21-38) F			
(1-20) G			
Not energy efficient - higher running costs			
England & Wales		EU Directive 2002/91/EC	