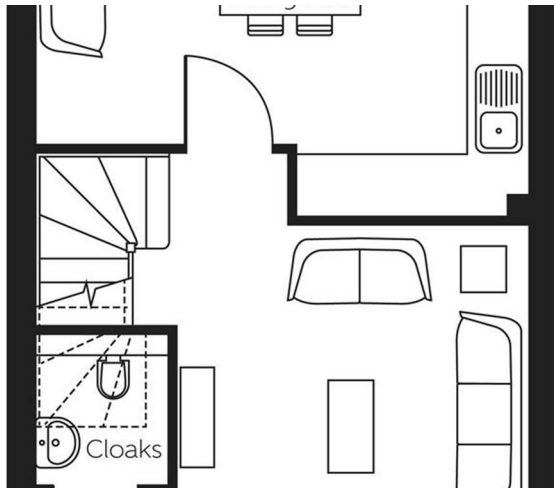
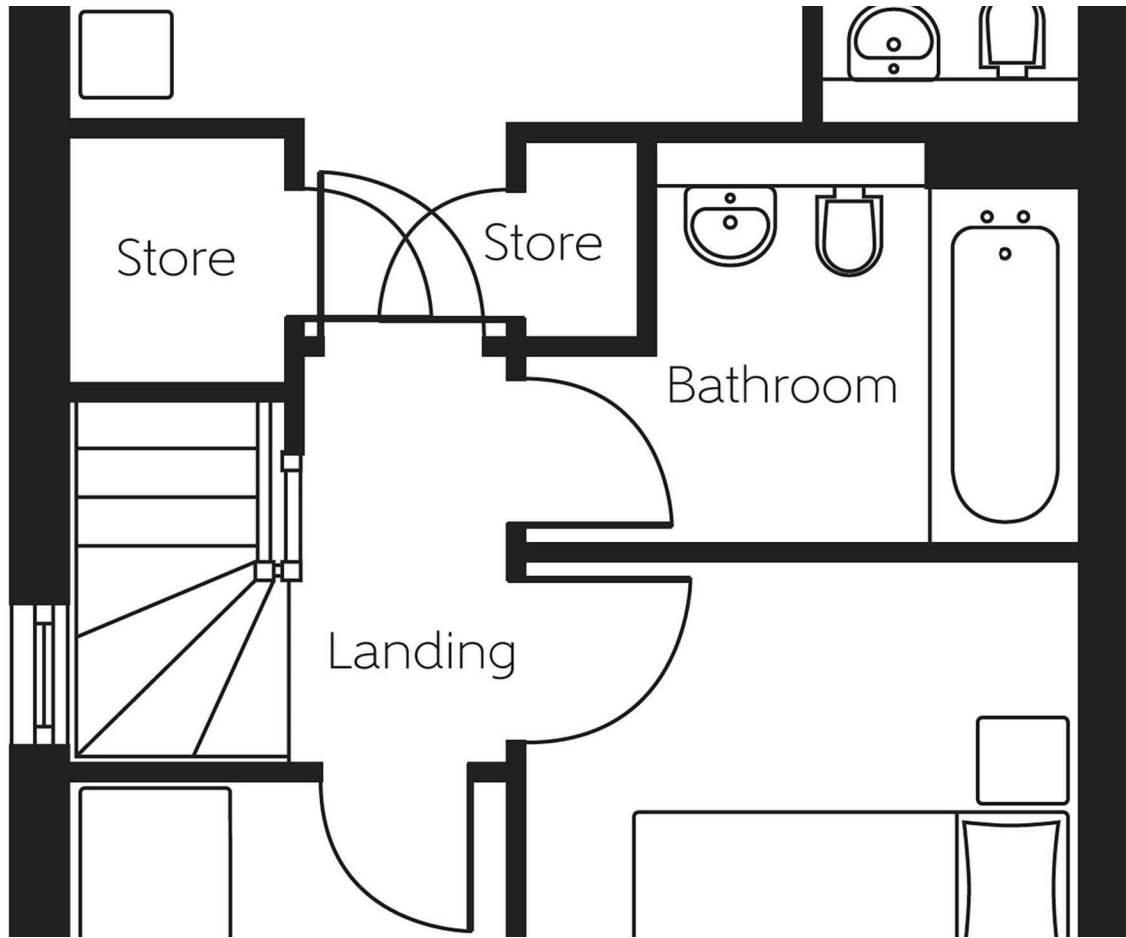




Additional window to plots 42, 44, 49, 57 & 77



The Cherry is a 3-bedroom home that features an open-plan kitchen and dining area, a separate living room, and an en suite to bedroom 1.

### Kitchen and dining area

15'8" x 11'3"

### Living room

11'1" x 13'7"

### Bedroom 1

11'5" x 8'2"

### Bedroom 2

8'7" x 10'1"

### Bedroom 3

6'9" x 6'9"









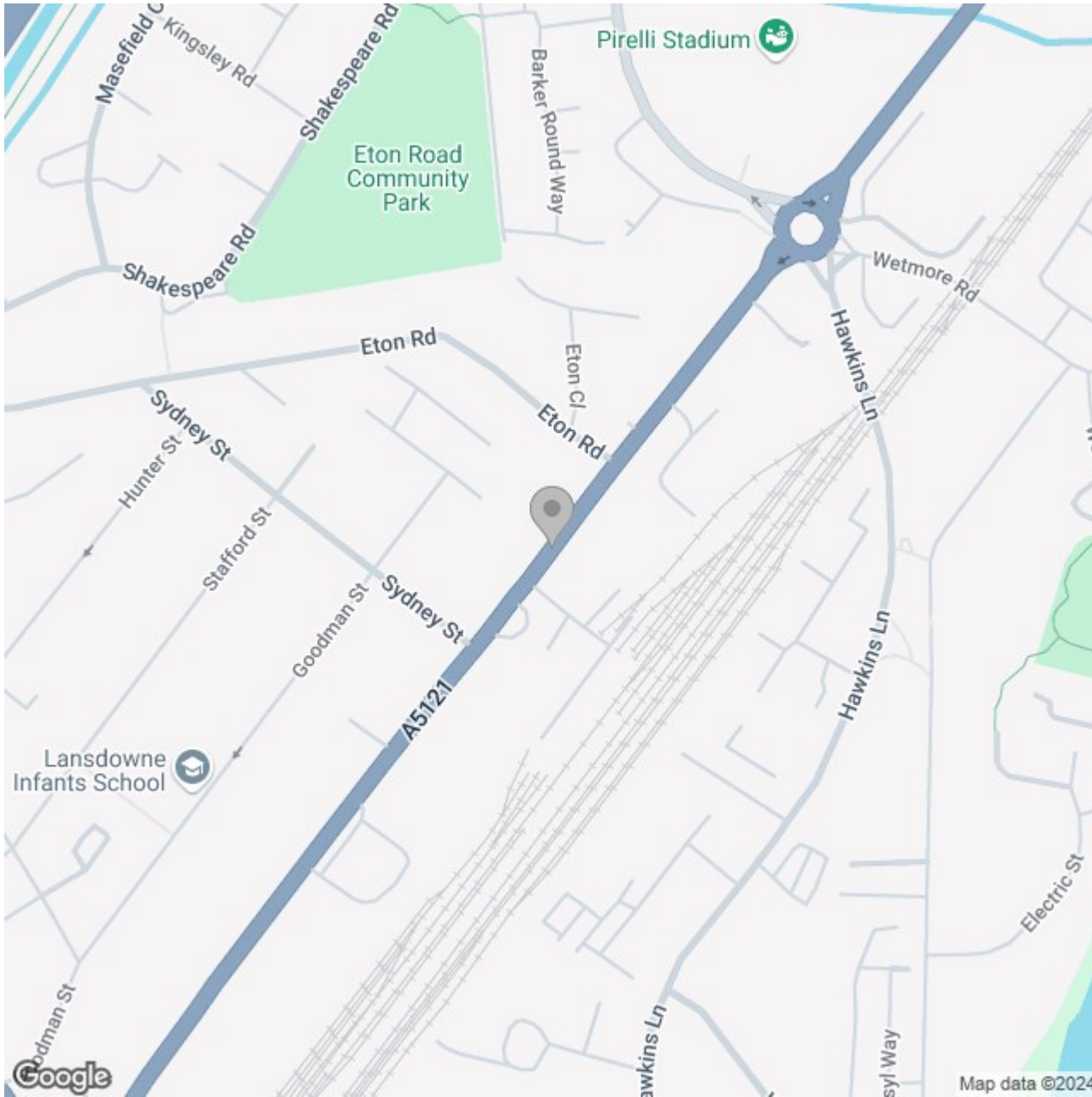












## Energy Efficiency Rating

	Current	Potential
Very energy efficient - lower running costs		
(92 plus) <b>A</b>		
(81-91) <b>B</b>		
(69-80) <b>C</b>		
(55-68) <b>D</b>		
(39-54) <b>E</b>		
(21-38) <b>F</b>		
(1-20) <b>G</b>		
Not energy efficient - higher running costs		
<b>England &amp; Wales</b>	EU Directive 2002/91/EC	