



ABODE
SALES & LETTINGS

THE **WOODYARD**

DOVERIDGE | DERBYSHIRE

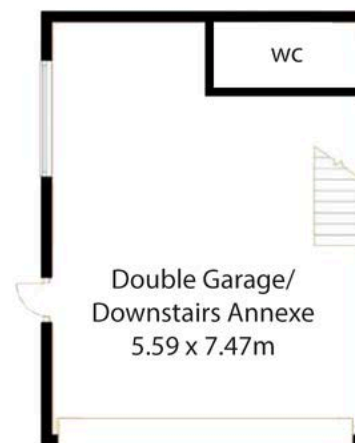
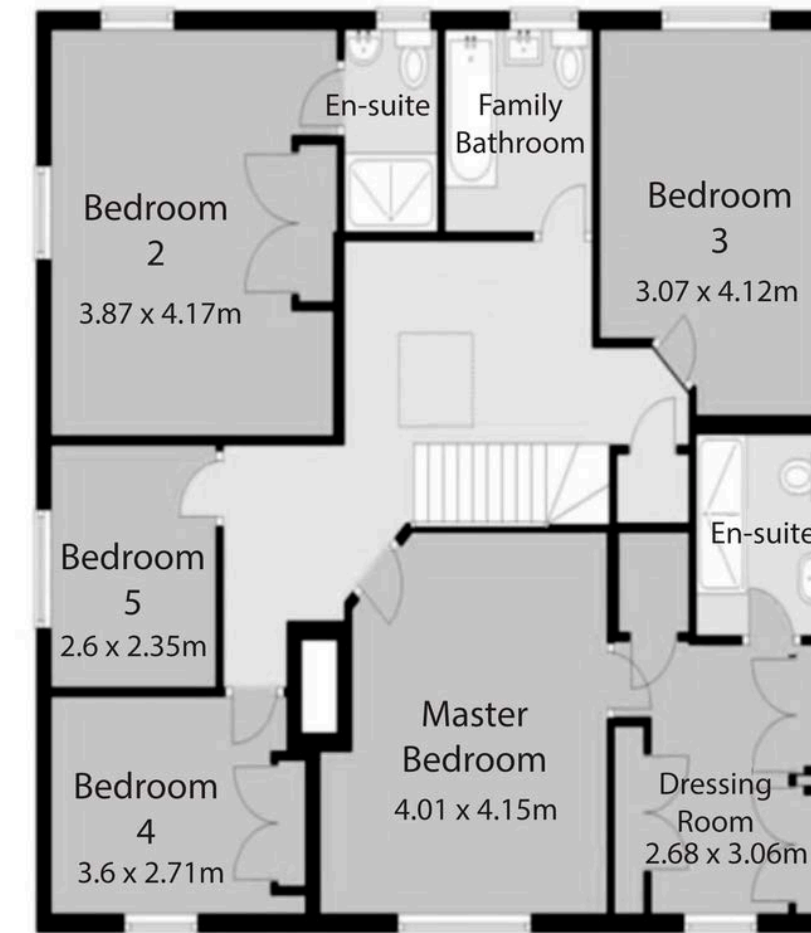
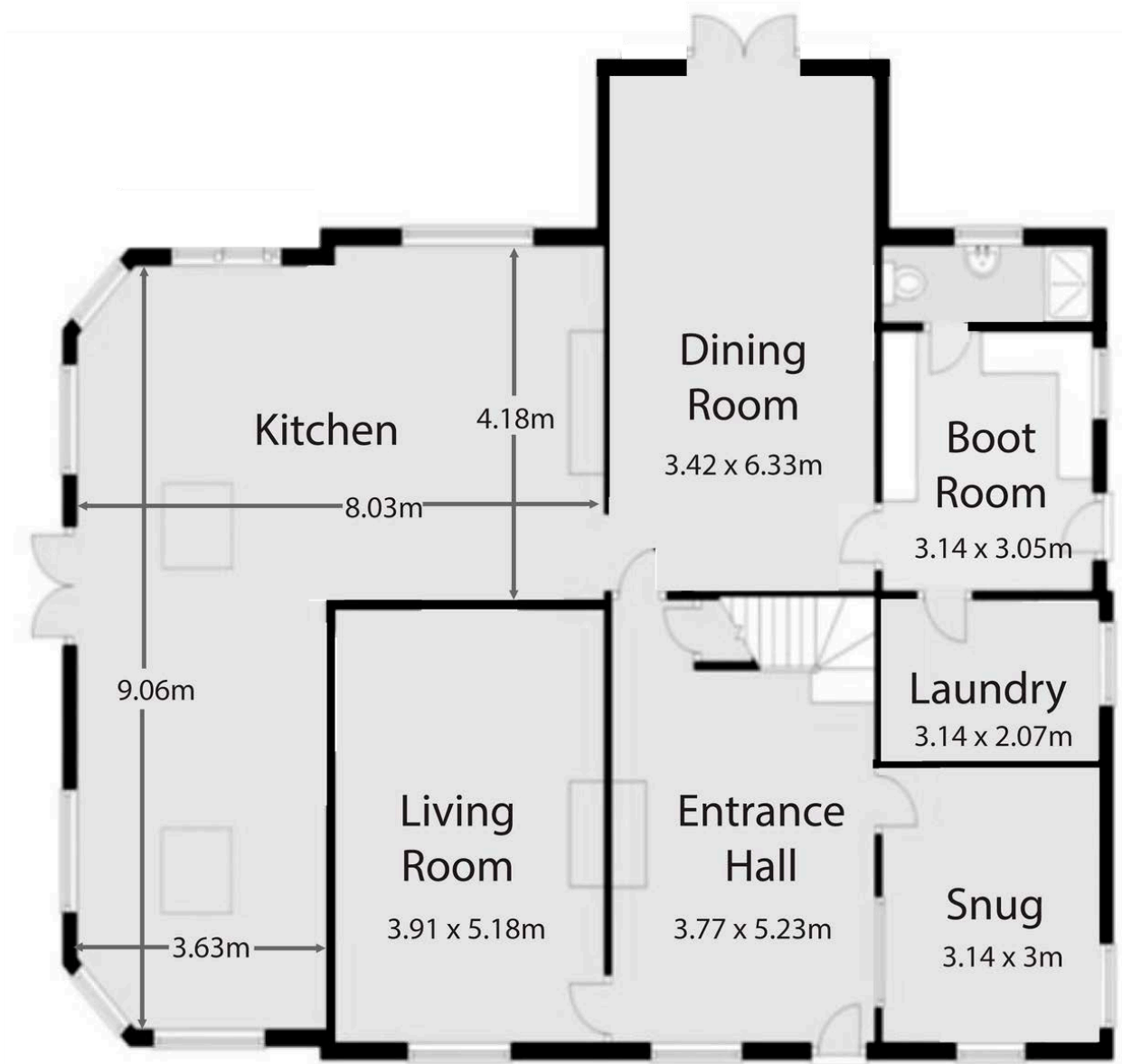


THE WOODYARD

OLD MARSTON LANE
DOVERIDGE | DERBYSHIRE

- 5 bedrooms
- 4 bathrooms
- 2 storey annex / garage
- Range of secure buildings
- Approximately 1.69 acres





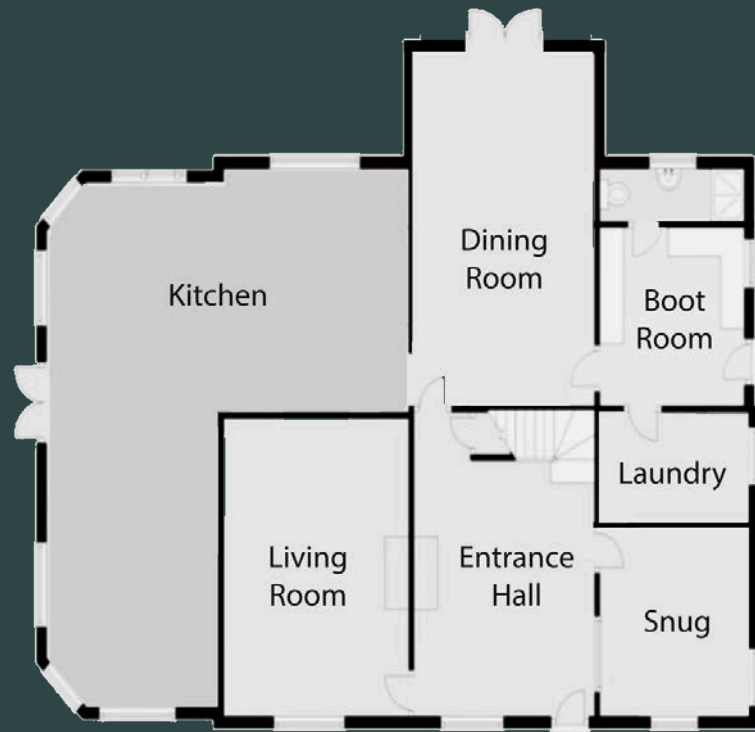
Please use a guide to layout only. Measurements are approximate and not to scale. This floor plan is for illustrative purposes only.

FLOOR PLANS

KITCHEN

A superb family living kitchen.

- High Specification
- 5m Kitchen Island
- Open Plan Layout





ADDITIONAL
PHOTOS

LIVING ROOM

3.91m x 5.18m

A tranquil space with views over the front lawn. Exquisite feature marble fireplace.



DINING ROOM

3.42m x 6.33m

A host's dream, seating up to 14 people. Featuring patio doors to the rear of the property.





ENTRANCE HALL



DOWNSTAIRS SHOWER ROOM



BOOT ROOM



SNUG

ADDITIONAL
PHOTOS

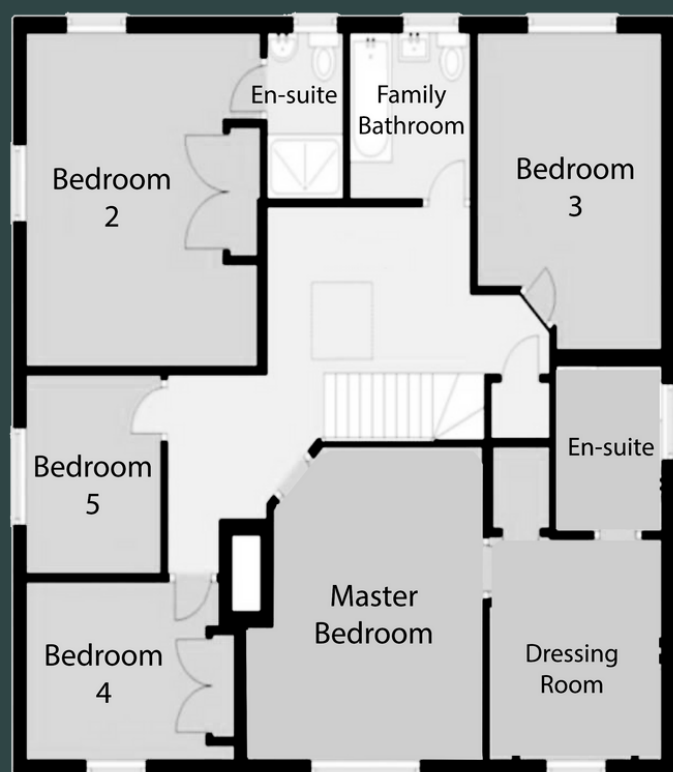
MASTER SUITE

Bedroom: 4.01m x 4.15m

Dressing room: 2.68m x 3.06m

En-suite: 2.14m x 2m

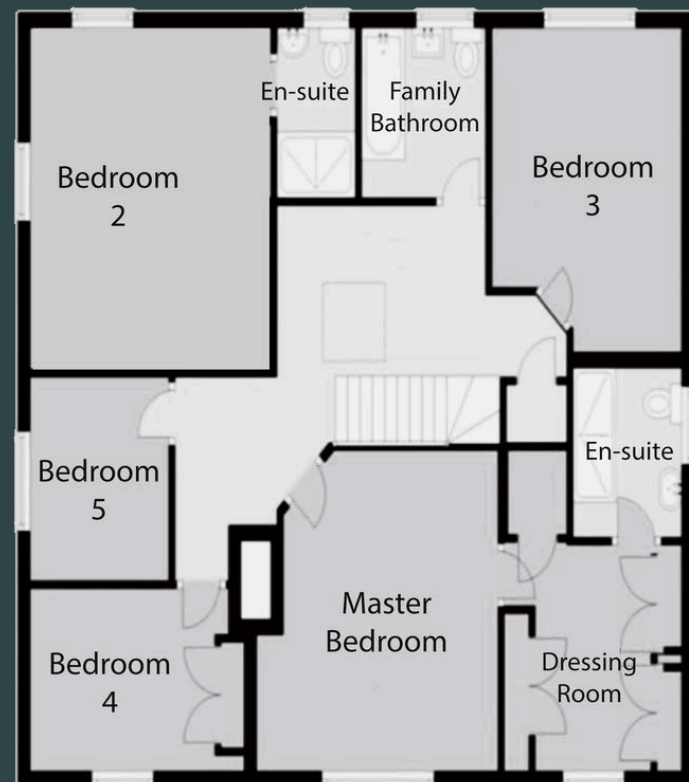
Featuring master bedroom, dressing room and en-suite shower room.



BEDROOM 2

3.78m x 4.17m

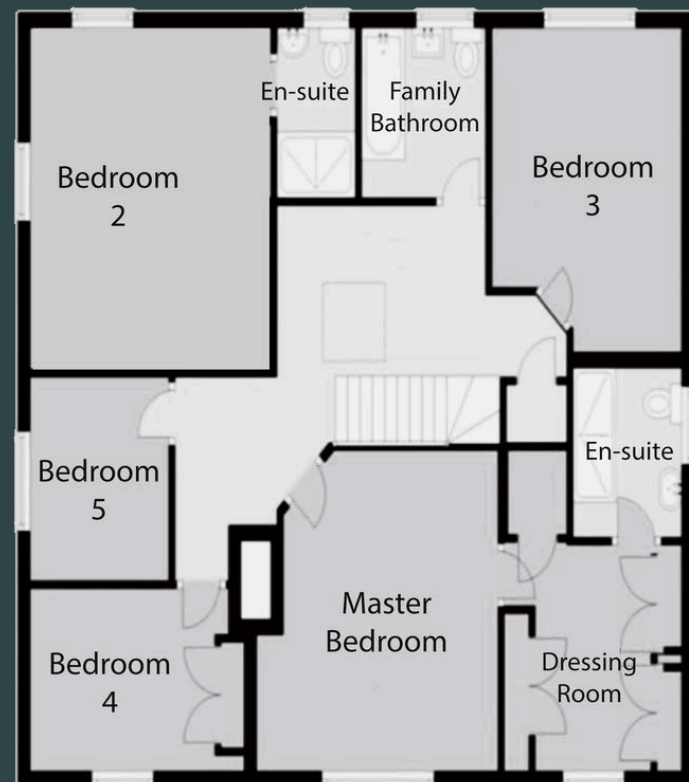
Featuring dual aspect windows looking out across the land. Built-in wardrobes and en-suite shower room.



BEDROOM 4

3.6m x 2.71m

A double room, featuring far reaching views and built-in wardrobes.





MASTER DRESSING ROOM



MASTER EN-SUITE



LANDING



BEDROOM 3

ADDITIONAL
PHOTOS

OUTSIDE

Building 1 : 25ft x 28ft

Building 2: 20ft x 28ft

Building 3: 25ft x 18ft

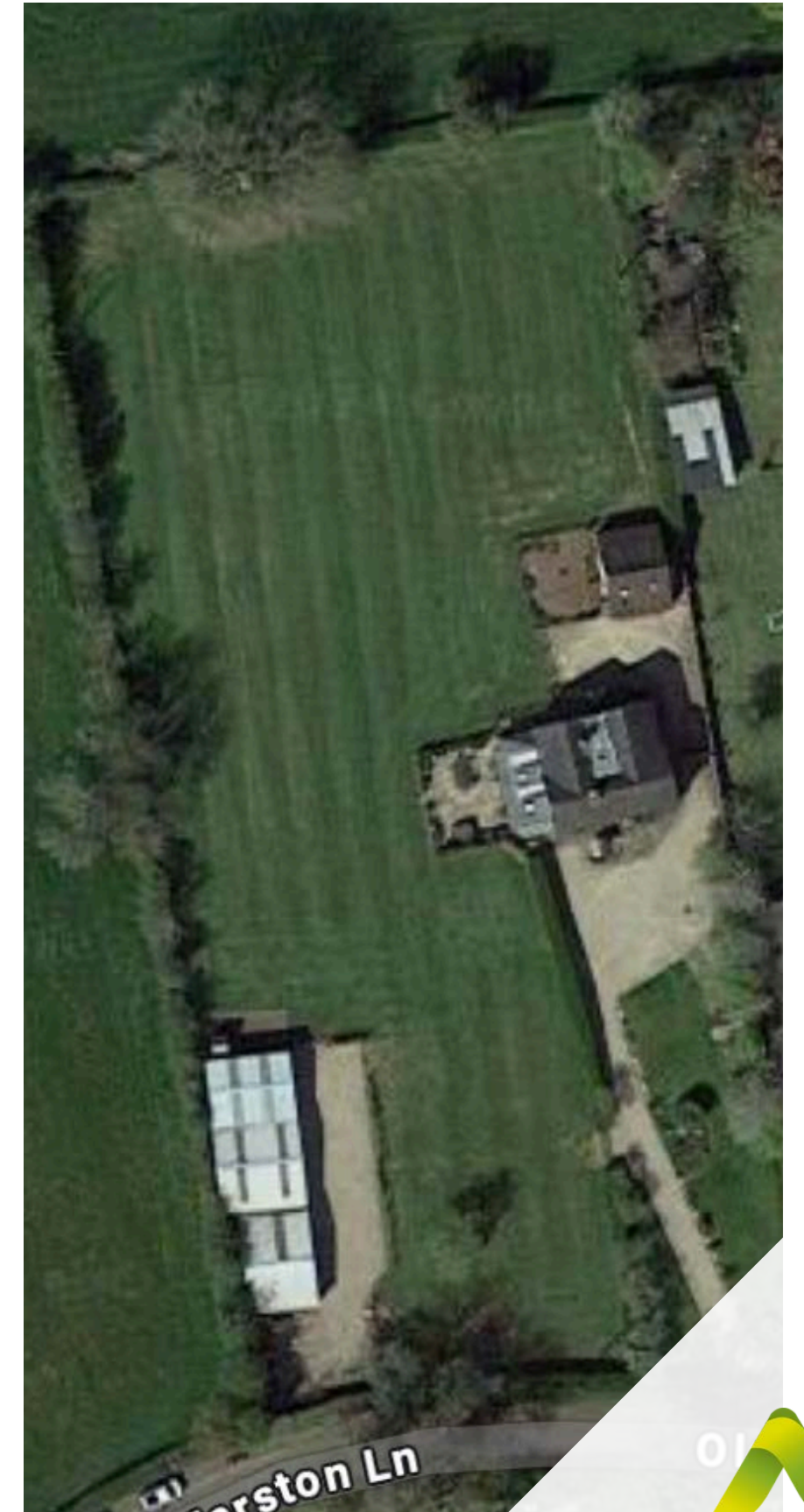
Double Garage / Annexe

(downstairs): 5.59m x 7.47m

Loft room / Annexe

(upstairs): 4.45m x 4.37m

The outside of this property features a separate two storey annexe / garage and a range of secure buildings suitable for a multitude of uses, with a separate roadside entrance.



ABODE
SALES & LETTINGS



SECURE BUILDINGS



UPSTAIRS IN ANNEXE



MAIN DRIVEWAY



OUTSIDE

**ADDITIONAL
PHOTOS**

DOVERIDGE VILLAGE

Doveridge is a beautiful and friendly village in the Derbyshire Dales, close to amenities of the neighbouring towns of Uttoxeter and Ashbourne.



WHAT'S NEARBY?

- 📍 Uttoxeter | 2 miles
- 📍 Ashbourne | 10 miles
- 📍 Burton | 12 miles
- 📍 Derby | 15 miles



EDUCATION





- Small Oaks Nursery | <1 mile
- Doveridge Primary | <1 mile
- QEGs Ashbourne | 12 miles
- Abbotsholme | 4 miles
- Denstone College | 6 miles
- Repton School | 14 miles



SUPERMARKETS

- Tesco | 2 miles
- Waitrose | 3 miles
- M&S Simply Food | 10 miles

WHAT'S NEARBY?

-  Uttoxeter | 2 miles
-  Ashbourne | 10 miles
-  Burton | 12 miles
-  Derby | 15 miles

LIFESTYLE & LEISURE

- Eaton Hall Shooting Ground | 1 mile
- JCB Golf & Country Club | 5 miles
- Hoar Cross Hall SPA Hotel | 11 miles
- Uttoxeter Racecourse | 3 miles
- St Georges Park | 10 miles
- Alton Towers | 9 miles
- CineBowl & i-skate | 2 miles
- Uttoxeter Leisure Centre | 3 miles

PUBLIC TRANSPORT

- Uttoxeter Train Station | 3 miles
- Bus Stop | 0.1 miles

CAFE'S & FARM SHOPS

- Sudbury Stables | 3 miles
- Denstone Farm Shop | 5 miles
- BEAR | 2 miles
- Bramshall Farm | 4 miles

PUBS & RESTAURANTS

- The Cavendish Arms | <1 mile
- The Crown Inn | 3 miles
- The Duncombe Arms: | 6 miles
- Lowe's on Carter Street | 3 miles
- Mario's | 3 miles
- The Lighthouse | 5 miles
- The Roebuck | 6 miles

THE WOODYARD

DOVERIDGE | DERBYSHIRE

For more information or to
book a viewing,
please get in touch:
Anna Hutton | 07581 205359
anna@thewoodyard.sale



These particulars, whilst believed to be accurate are set out as a general outline only for guidance and do not constitute any part of an offer or contract. Intending purchasers should not rely on them as statements of representation of fact, but must satisfy themselves by inspection or otherwise as to their accuracy. No person in this firm's employment has the authority to make or give any representation or warranty in respect of the property.