



30 Uttoxeter Road , Upper Tean, ST10 4LG

Welcome to this stunning traditional Victorian home, perfectly situated on a 0.15-acre plot, offering a harmonious blend of timeless charm and spacious living. This three-story residence boasts four spacious bedrooms spread over two upper floors, making it an ideal family home.

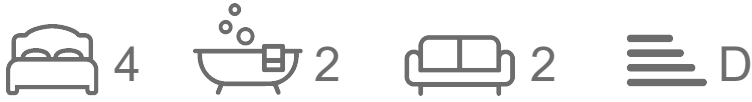
As you step inside, you'll be greeted by an abundance of original features that exude character and elegance. Exposed beams, focal point fireplaces, and a delightful farmhouse-style kitchen create a warm and inviting atmosphere throughout the home.

Two reception rooms are perfect for relaxing evenings, formal dining or playroom spaces, while the kitchen/diner provides ample space for family gatherings and entertaining guests. Each bedroom offers its own unique charm, with plenty of natural light and space to create your personal retreat.

£310,000

30 Uttoxeter Road

, Upper Tean, ST10 4LG



Porch

Bathroom

Hallway

Bedroom Four

Sitting Room

Lounge

Kitchen/Diner

First Floor Landing

Bedroom Two

Bedroom One

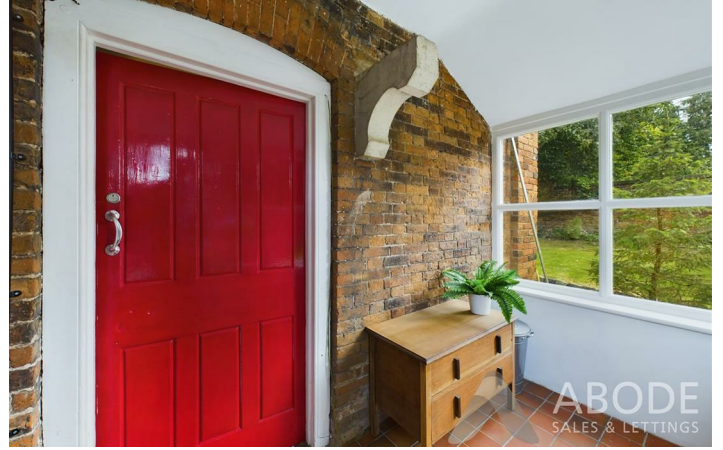
En-suite

Bedroom Three

Second Floor Landing



[Directions](#)



Floor Plan



These particulars, whilst believed to be accurate are set out as a general outline only for guidance and do not constitute any part of an offer or contract. Intending purchasers should not rely on them as statements of representation of fact, but must satisfy themselves by inspection or otherwise as to their accuracy. No person in this firm's employment has the authority to make or give any representation or warranty in respect of the property.

1 Cross Street, Cheadle, Cheadle, ST10 1NP
Tel: 01538 750081 Email: ashbourne@abodemidlands.co.uk <https://www.abodemidlands.co.uk>

