



## 30 The Croft

Cheadle, Cheadle, ST10 2DR

\*\*\*\* COUNTRYSIDE VIEWS \*\*\* OVER 55s \*\*\*\* Beautiful position overlooking the countryside with a hall, lounge and dining room, kitchen, large bedroom with walk in wardrobe and an en suite wc, office and a shower room. Parking and garden. NO CHAIN

£95,000

## 30 The Croft

Cheadle, Cheadle, ST10 2DR



- HALL
- KITCHEN
- EN SUITE WC
- NO CHAIN
- LOUNGE
- ONE BEDROOM
- GARDEN
- DINING ROOM
- SHOWER ROOM
- DRIVE

HALL

EXTRA INFORMATION

LOUNGE

15'5 x 11'7 (4.70m x 3.53m)

DINING ROOM

10'9 x 10'0 (3.28m x 3.05m)

KITCHEN

12'2 x 9'9 (3.71m x 2.97m)

OFFICE

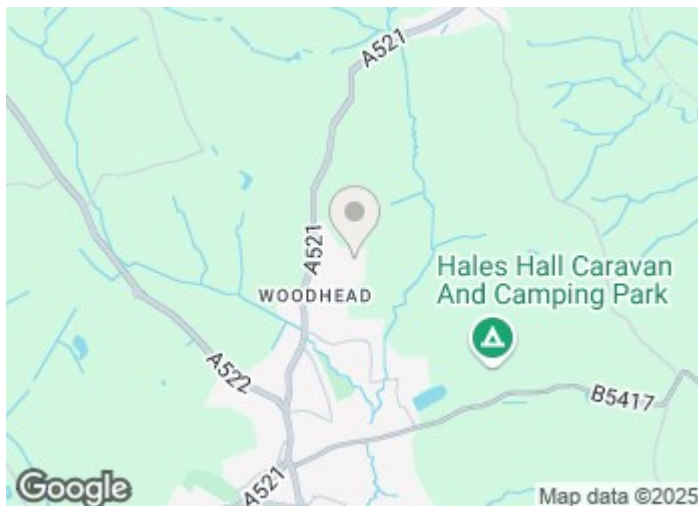
SHOWER ROOM

BEDROOM

11'3 x 9'11 (3.43m x 3.02m)

WC

OUTSIDE

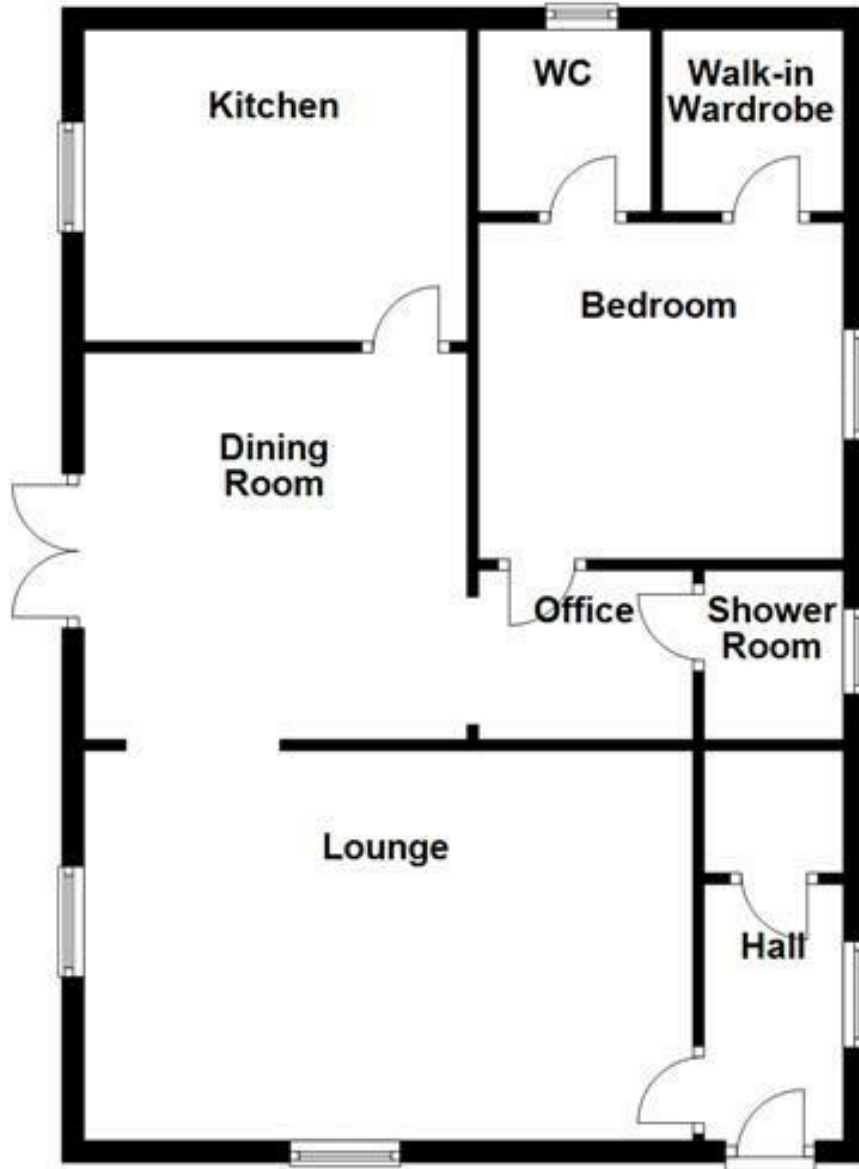


[Directions](#)



Floor Plan

**Ground Floor**



Please use as a guide to layout only. They are not intended to be to scale. Property of Abode Anderson-Dixon, Burton-Uttoxetter-Ashbourne  
Plan produced using PlanUp.

These particulars, whilst believed to be accurate are set out as a general outline only for guidance and do not constitute any part of an offer or contract. Intending purchasers should not rely on them as statements of representation of fact, but must satisfy themselves by inspection or otherwise as to their accuracy. No person in this firm's employment has the authority to make or give any representation or warranty in respect of the property.