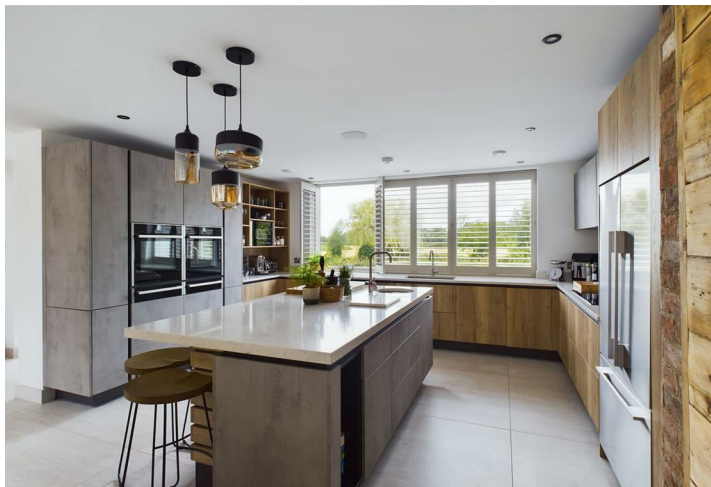






A magnificently appointed high specification detached residence, situated upon an elevated plot with views over adjoining countryside. The facade, adorned with natural materials such as stone and timber cladding, combined with brick and tiled roof with oak framed porch and oak car port, gives character exuding with contemporary flair.



















Approximate total area⁽¹⁾

145.89 m²
1570.37 ft²

Reduced headroom

0.42 m²
4.49 ft²

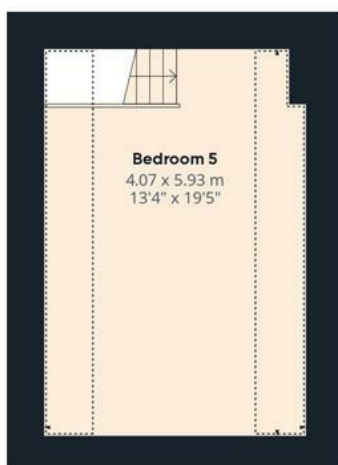
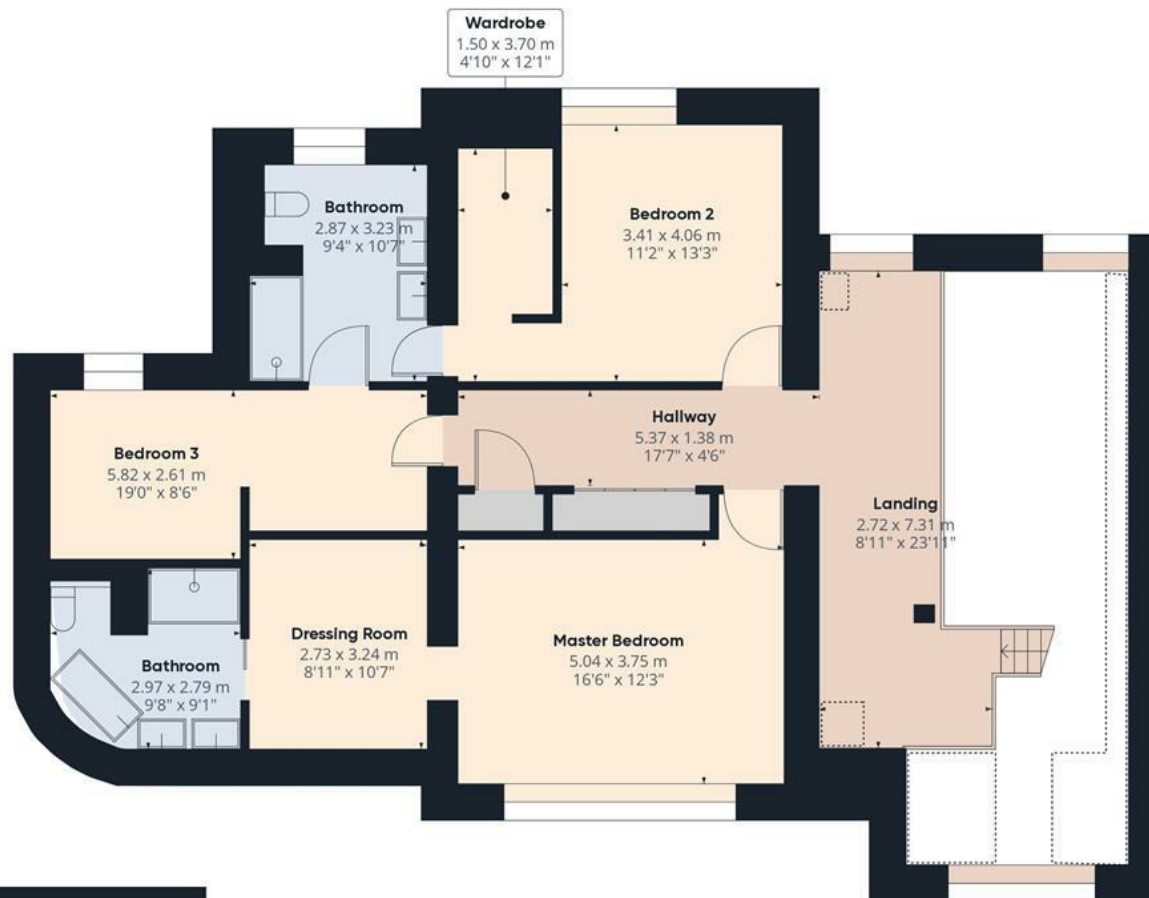
(1) Excluding balconies and terraces.

Reduced headroom
(below 1.5m/4.92ft)

While every attempt has been made to ensure accuracy, all measurements are approximate, not to scale. This floor plan is for illustrative purposes only.

GIRAFFE360

Floor 0



Floor 1

Approximate total area⁽¹⁾

128.31 m²
1381.14 ft²

Reduced headroom

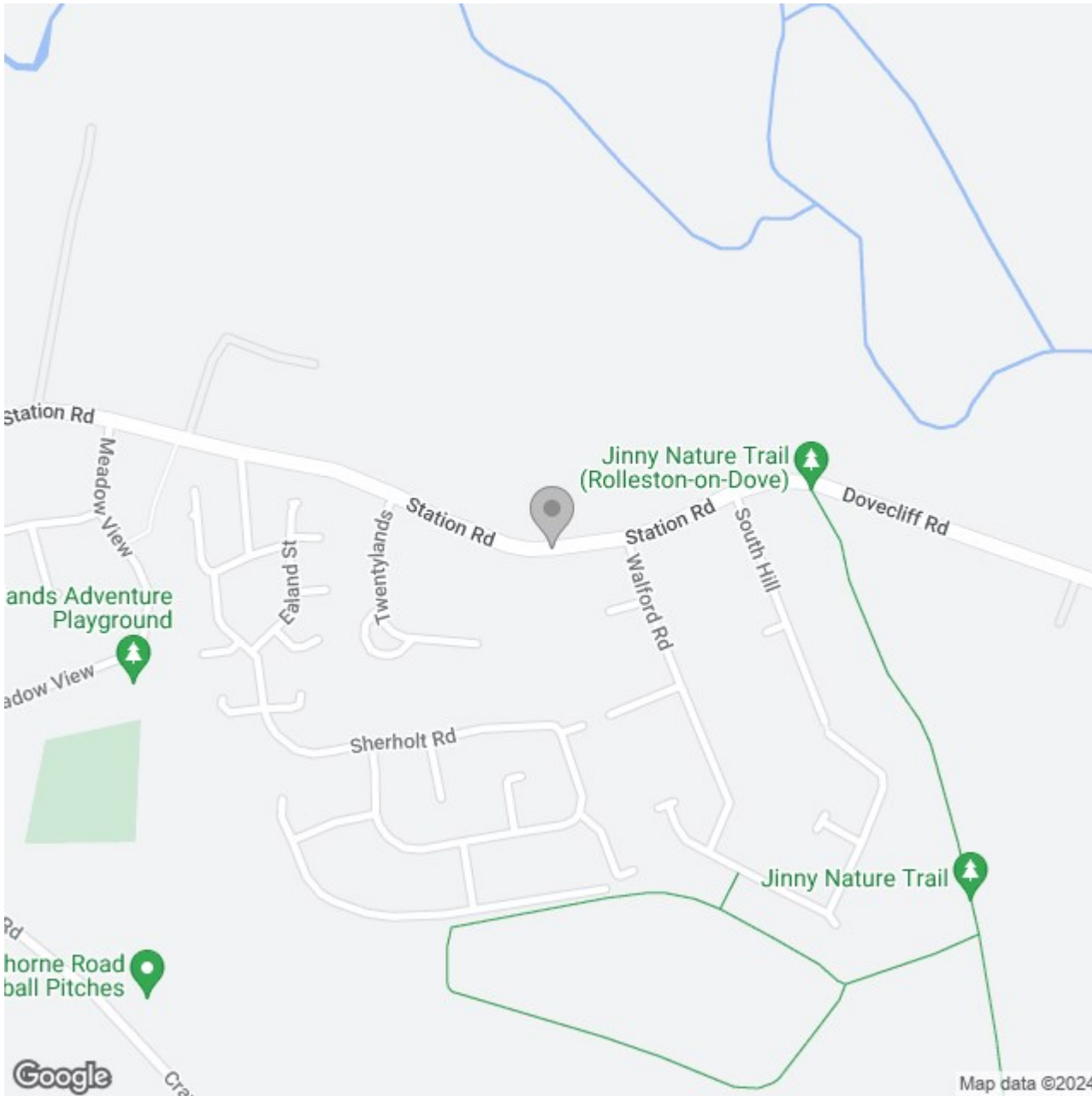
10.54 m²
113.43 ft²

(1) Excluding balconies and terraces

Reduced headroom
(below 1.5m/4.92ft)

While every attempt has been made to ensure accuracy, all measurements are approximate, not to scale. This floor plan is for illustrative purposes only.

GIRAFFE360



Energy Efficiency Rating

	Current	Potential
<i>Very energy efficient - lower running costs</i>		
(92 plus) A		
(81-91) B		
(69-80) C		
(55-68) D		
(39-54) E		
(21-38) F		
(1-20) G		
<i>Not energy efficient - higher running costs</i>		
England & Wales	EU Directive 2002/91/EC	