





****** LARGE PLOT ******
EXTENDED AND STILL WITH PLENTY OF POTENTIAL ****
Semi detached home in a quiet cul de sac location offering a storm porch and hall, lounge and dining room, extended fitted kitchen and shower room. The first floor offers three bedrooms and a bathroom with free standing bath. Ample parking and turning to the front, single garage and a good size enclosed rear garden, with summer house. INTERNAL VIEWING HIGHLY RECOMMENDED



HALL

Storm porch with entrance door into the hall with radiator, under stairs storage cupboard, stairs to the first floor and doors to-

DINING ROOM

Upvc double glazed doors onto the garden, radiator and one through to the lounge.

LOUNGE

Feature fireplace, radiator and upvc double glazed window to the front.

KITCHEN

Fitted units with oak work surfaces and a Belfast sink unit. Breakfast bar, space for a range style cooker, fitted extractor hood. Space for a fridge freezer, radiator, tiled floor, upvc double glazed windows to the rear and a door to the garden.

SHOWER ROOM

Walk-in shower with rainfall shower, vanity sink unit with wash hand basin and storage under, low flush wc, radiator and upvc double glazed window.

FIRST FLOOR LANDING

Upvc double glazed window, loft access and doors to -

BEDROOM 1

Built in wardrobes, radiator and upvc double glazed window to the front.



ABODE
SALES & LETTINGS

BEDROOM 2

Upvc double glazed window and a radiator.

BEDROOM 3

Upvc double glazed window and a radiator.



ABODE
SALES & LETTINGS



ABODE
SALES & LETTINGS



ABODE
SALES & LETTINGS



ABODE
SALES & LETTINGS



ABODE
SALES & LETTINGS



ABODE
SALES & LETTINGS



ABODE
SALES & LETTINGS



BATHROOM

Free standing bath with hand help shower, vanity sink with wash hand basin and storage under, radiator and upvc double glazed window.

GARAGE

Up and over door, personal door into the kitchen, power and light.

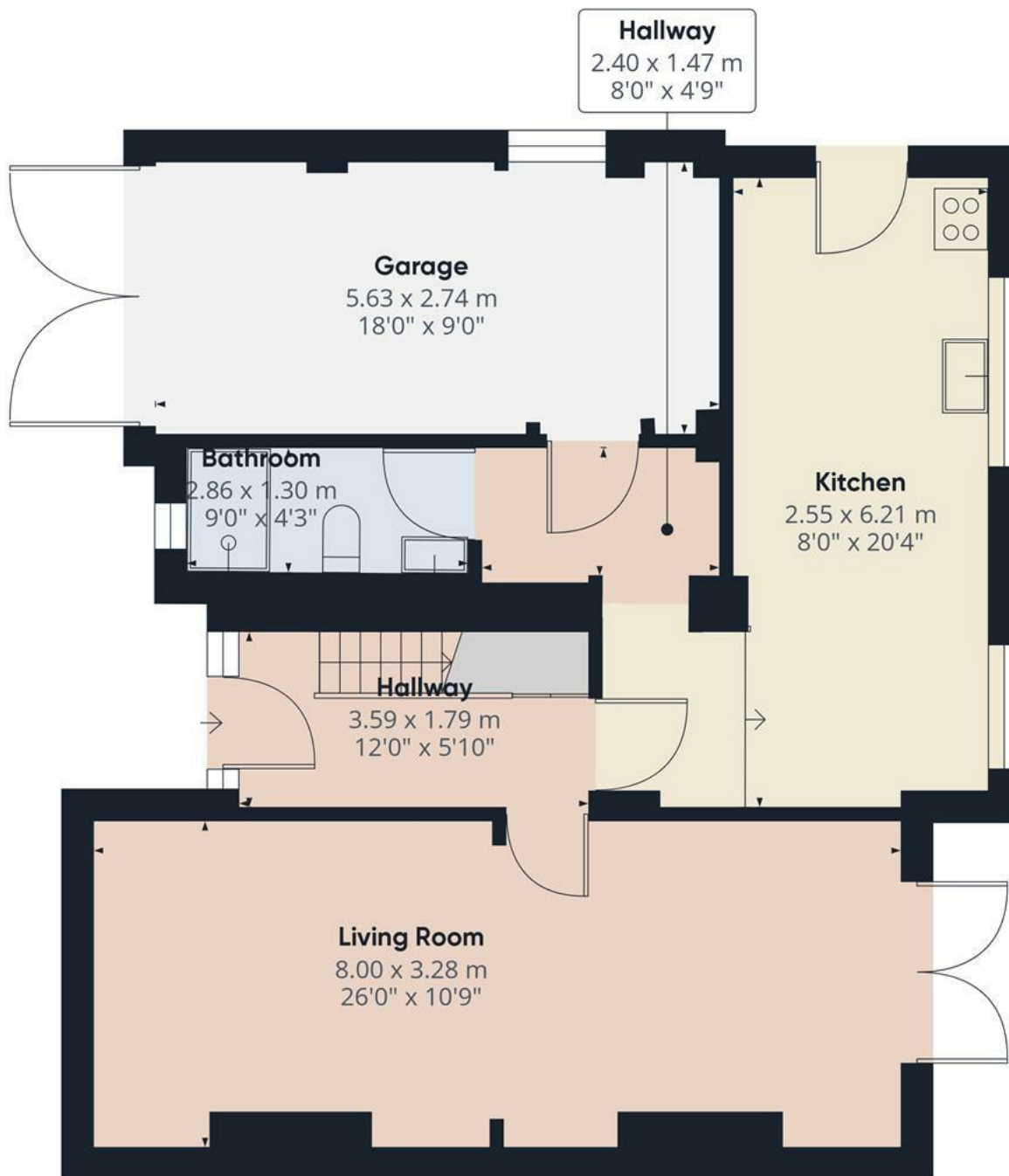
OUTSIDE

Double gates into ample parking and turning area. Gated access to the enclosed rear garden offering a good size lawn, borders, seating areas, pergola and a summer house.









Floor 0

Approximate total area⁽¹⁾

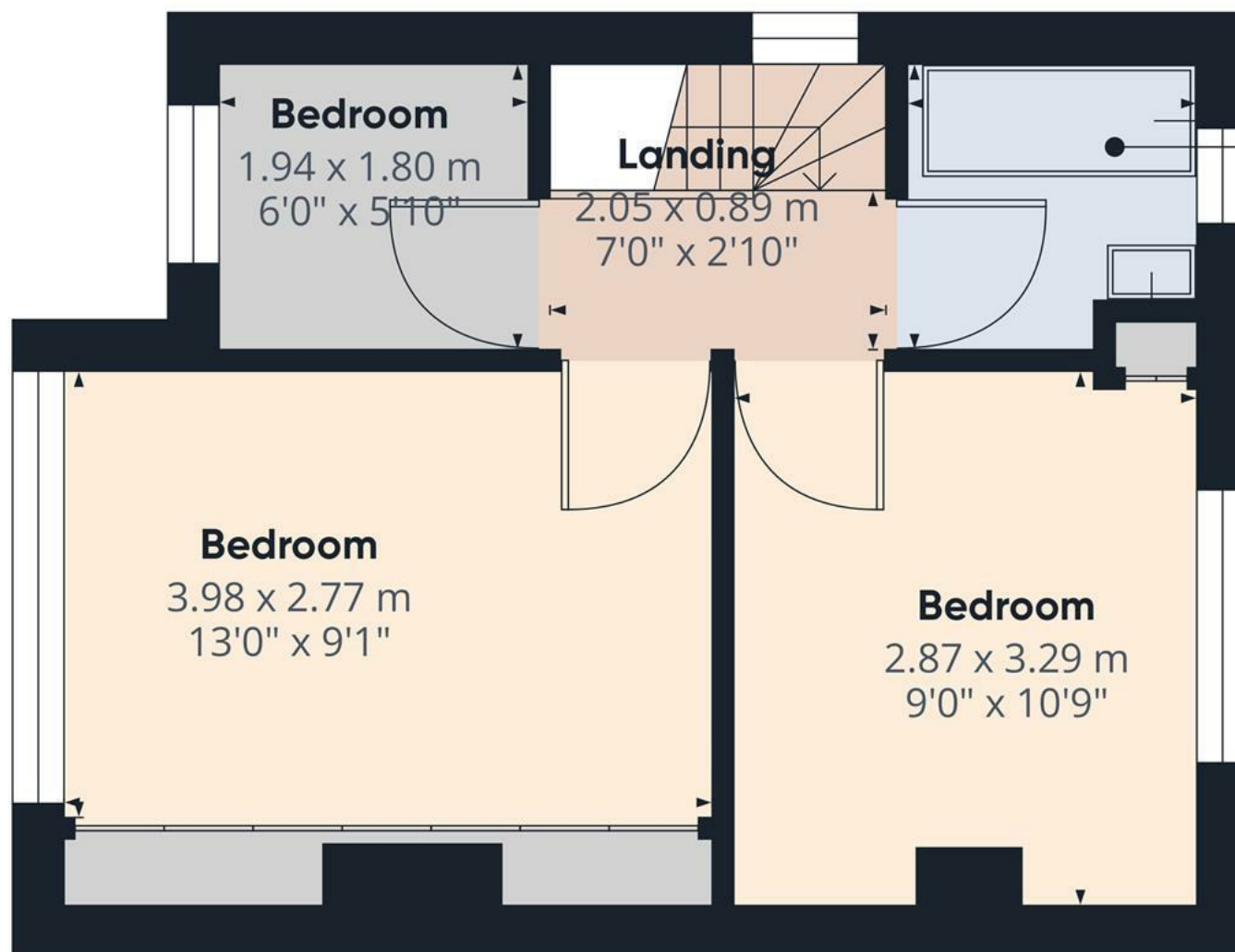
73.69 m²

793.19 ft²

(1) Excluding balconies and terraces

While every attempt has been made to ensure accuracy, all measurements are approximate, not to scale. This floor plan is for illustrative purposes only.

GIRAFFE360



Bathroom
1.79 x 1.82 m
6'0" x 6'0"

Approximate total area⁽¹⁾

31.42 m²

338.2 ft²

(1) Excluding balconies and terraces

While every attempt has been made to ensure accuracy, all measurements are approximate, not to scale. This floor plan is for illustrative purposes only.

GIRAFFE360

Floor 1

