



E 13 Washbrook Way

Fenny Bentley, Ashbourne, DE6 1LE

**** PRICED TO SELL **** Perfect for a family to share as a holiday home or run as a holiday let business. Really well kept and in a perfect spot on the Ashbourne Heights park. The site offers a full range of amenities including a swimming pool, onsite shop and kids play area. The park home offers an open plan living and dining kitchen, two bedrooms, master bedroom with ensuite wc and a shower room. Raised decked patio area and parking. VIEWING IS HIGHLY RECOMMENDED

£39,995

E 13 Washbrook Way

Fenny Bentley, Ashbourne, DE6 1LE



- PERFECT LOCATION
- OPEN PLAN LIVING AND DINING KITCHEN
- SHOWER ROOM
- GREAT OPPORTUNITY
- TWO BEDROOMS
- RASIED DECKED GARDEN
- HOME OR HOLIDAY LET
- EN SUITE WC
- PARKING

OPEN PLAN LIVING

BEDROOM 1

WC

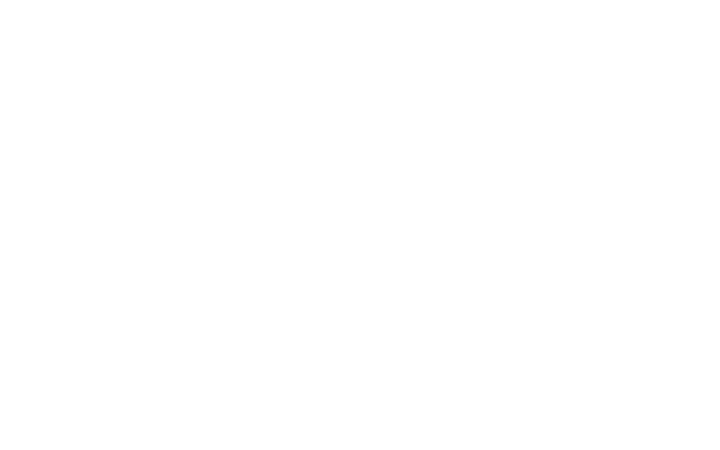
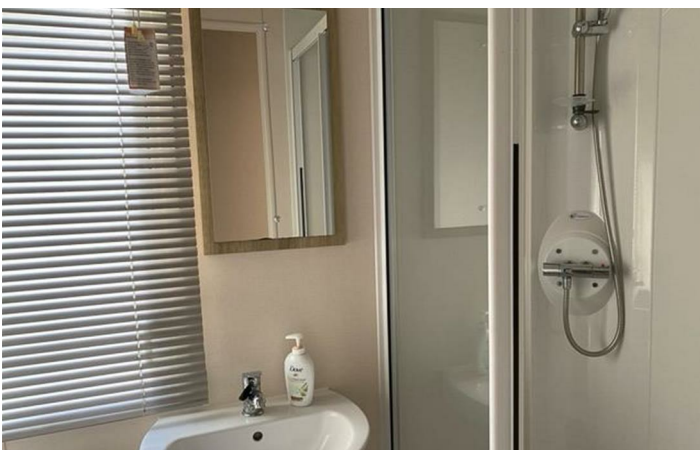
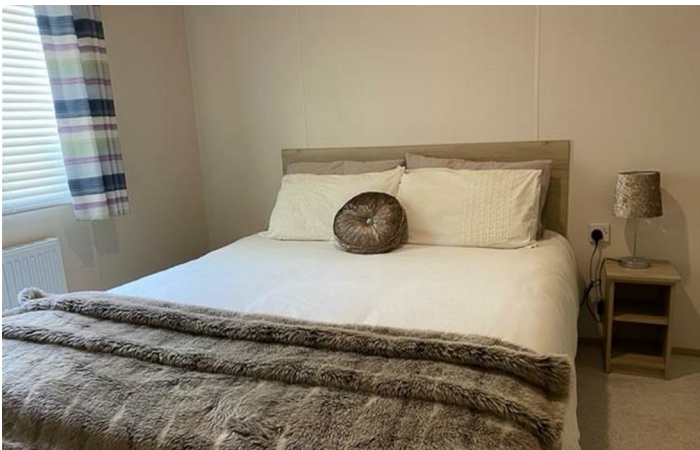
BEDROOM 2

SHOWER ROOM

OUTSIDE



Directions



Floor Plan

These particulars, whilst believed to be accurate are set out as a general outline only for guidance and do not constitute any part of an offer or contract. Intending purchasers should not rely on them as statements of representation of fact, but must satisfy themselves by inspection or otherwise as to their accuracy. No person in this firm's employment has the authority to make or give any representation or warranty in respect of the property.

1 Market Place, Ashbourne, Derbyshire, DE6 1ES
 Tel: 01335 300600 Email: ashbourne@abodemidlands.co.uk <https://www.abodemidlands.co.uk>

Energy Efficiency Rating		Current	Potential
<i>Very energy efficient - lower running costs</i>			
(92 plus) A			
(81-91) B			
(69-80) C			
(55-68) D			
(39-54) E			
(21-38) F			
(1-20) G			
<i>Not energy efficient - higher running costs</i>			
England & Wales		EU Directive 2002/91/EC 