

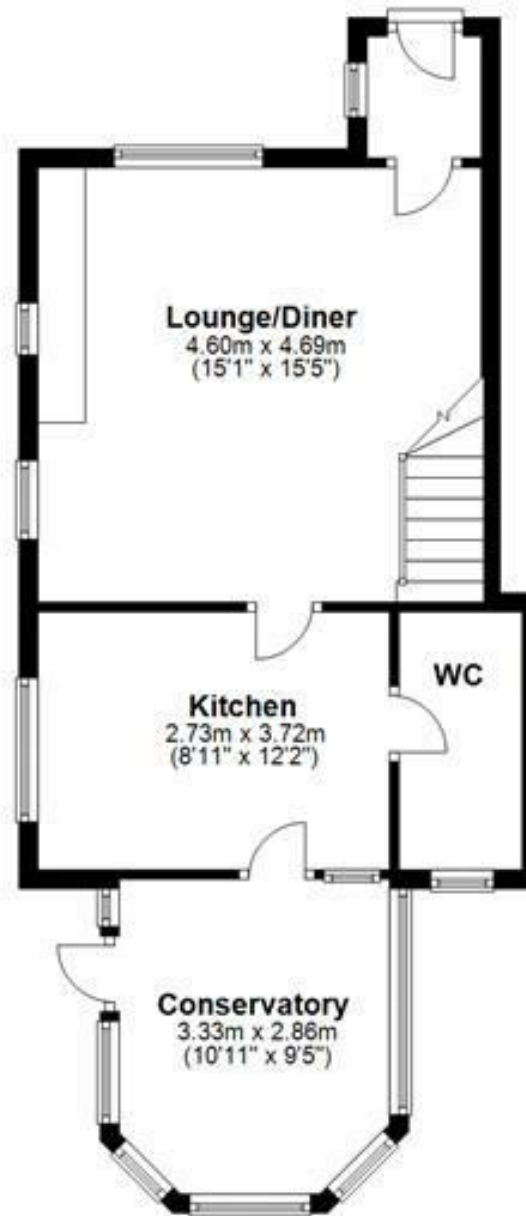




A rare opportunity to obtain a characterful property, situated within the desirable village of Kings Bromley, having good access to a range of local amenities and transport links. The property benefits from a lounge diner with inglenook fireplace, cottage style kitchen, conservatory, a double bedroom and en-suite, and a good sized garden. Viewing is highly recommended strictly via appointment only.



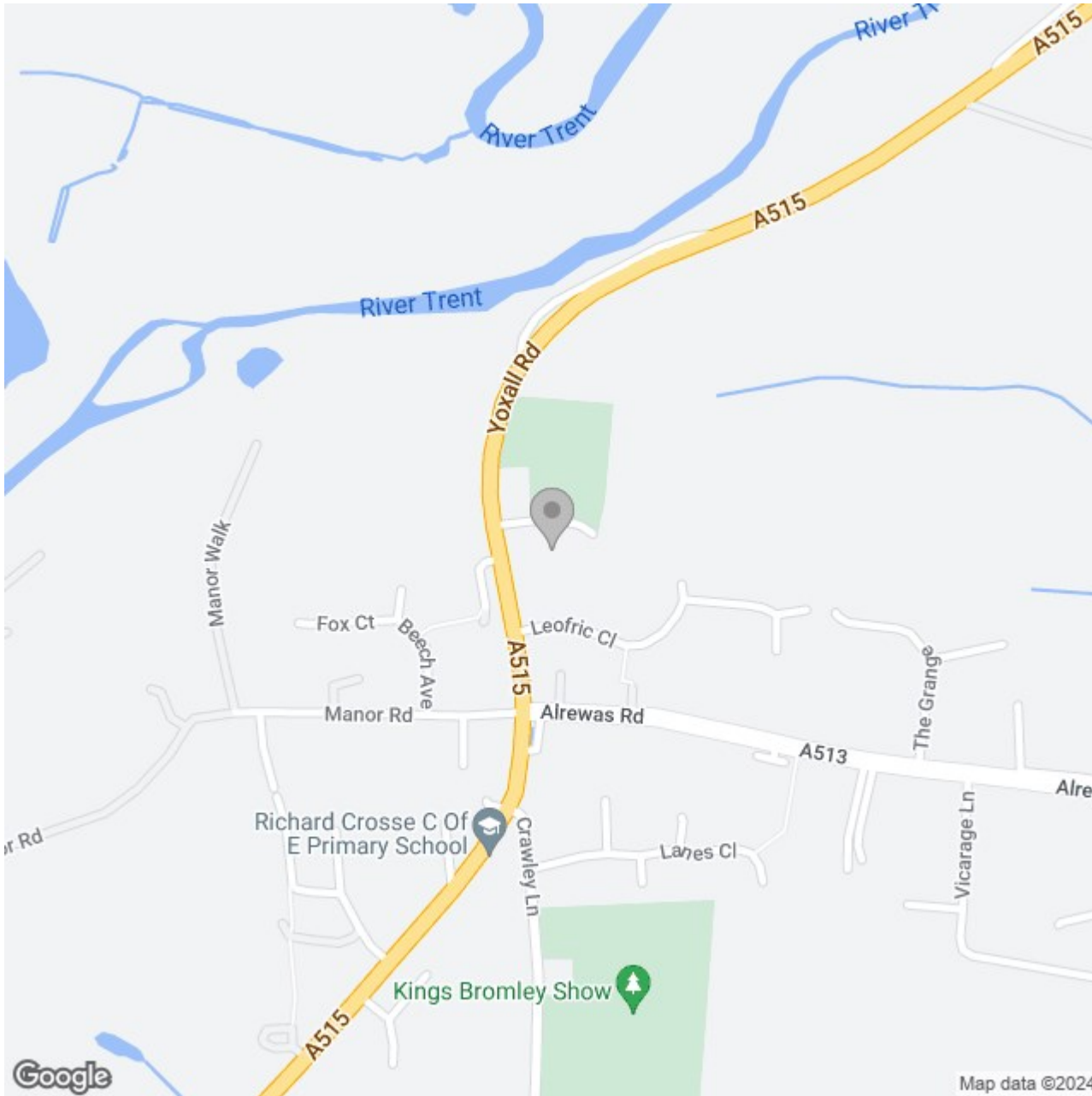
Ground Floor



Please use as a guide to layout only. They are not intended to be to scale. Property of Abode Anderson-Dixon.
Burton-Uttoxetter-Ashbourne
Plan produced using PlanUp.

First Floor





Energy Efficiency Rating

	Current	Potential
<i>Very energy efficient - lower running costs</i>		
(92 plus) A		
(81-91) B		
(69-80) C		
(55-68) D		
(39-54) E		
(21-38) F		
(1-20) G		
<i>Not energy efficient - higher running costs</i>		
England & Wales	EU Directive 2002/91/EC	