





****** EXTENDED FOUR
BEDROOM PROPERTY ******

Perfect family home offering a hall, lounge, fitted breakfast kitchen open into the garden/dining room, utility room and a guest cloakroom. Four bedrooms, family bathroom, enclosed garden, drive and a single garage. CALL NOW FOR A VIEWING APPOINTMENT



HALL

Entrance door into the hall with stairs to the first floor and door to -

LOUNGE

Recessed fireplace, radiator and upvc double glazed window.

BREAKFAST KITCHEN

Fitted units with work surfaces and sink unit, breakfast bar, appliance spaces and plumbing for a dishwasher. open into the garden/dining room and a door to the utility room.

GARDEN/DINING ROOM

Upvc double glazed window and doors onto the garden.

UTILITY ROOM

Fitted cupboard, work surface, plumbing and space for a washing machine, door to the garden, garage and cloakroom.

CLOAKROOM

Low flush wc and wash hand basin.

FIRST FLOOR LANDING

Loft access storage cupboard and doors to -

BEDROOM

Upvc double glazed window and radiator.

BEDROOM

Upvc double glazed window and radiator.



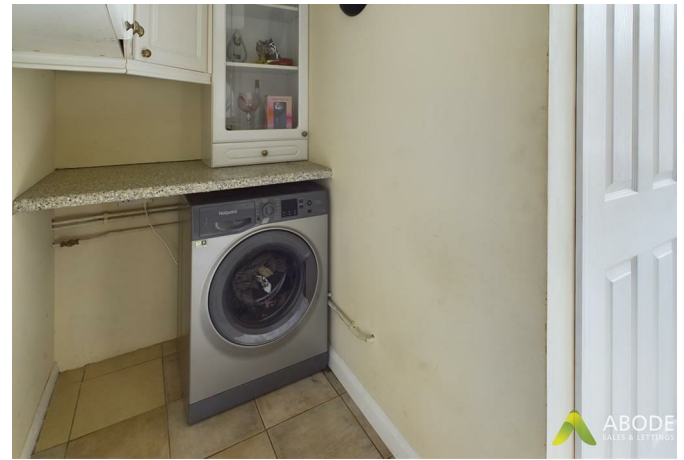
BEDROOM

Upvc double glazed windows and radiator.

BEDROOM

Fitted wardrobes and cupboards, Upvc double glazed window and radiator.







BATHROOM

Panel enclosed bath with a shower and shower screen, low flush wc, wash hand basin, radiator and upvc double glazed window.

OUTSIDE

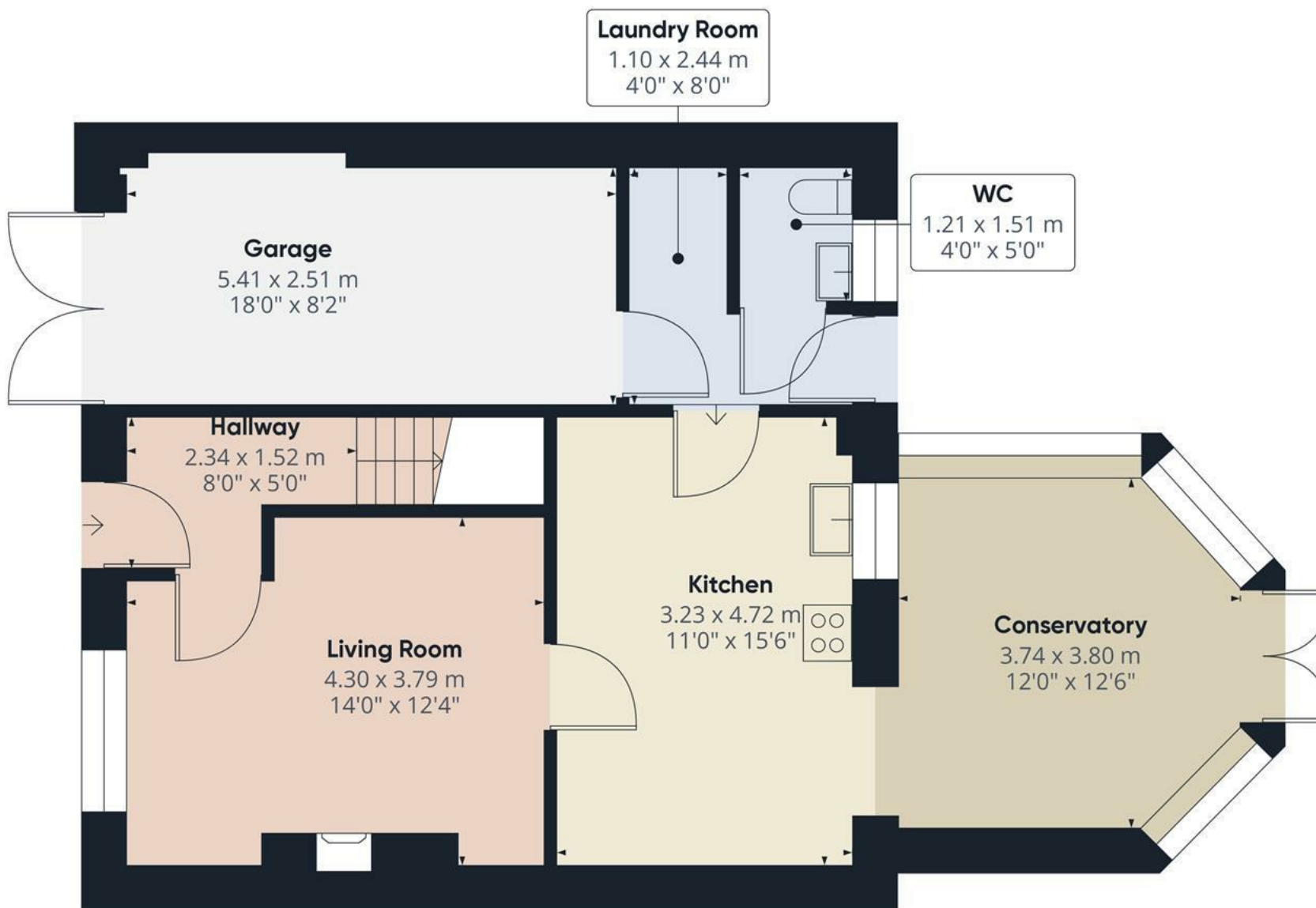
Front drive and garden area, enclosed rear garden with paved patio area, seating area and lawn.

GARAGE

Single garage with power and light, door into the utility room.







Approximate total area⁽¹⁾

69.55 m²

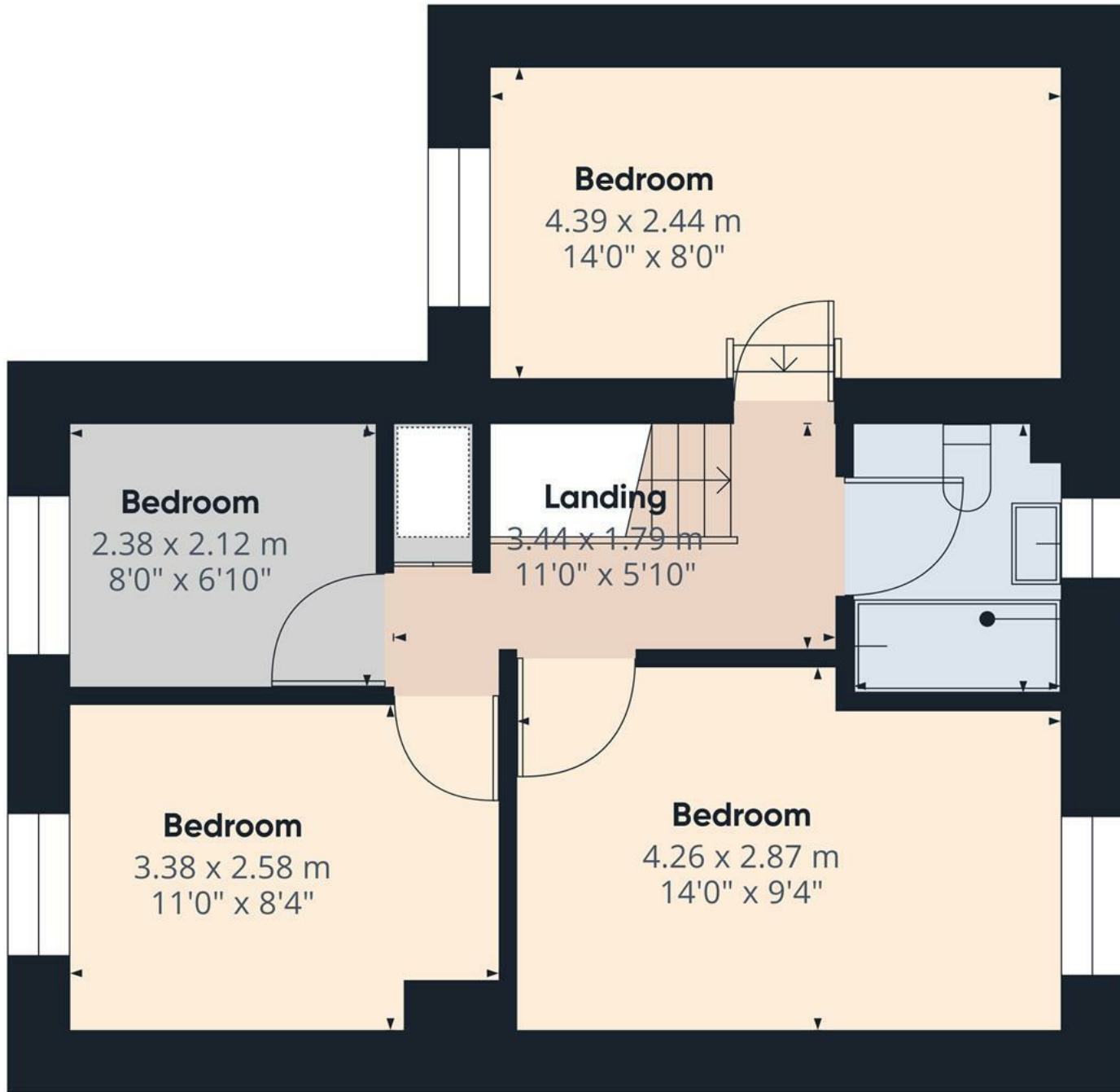
748.63 ft²

(1) Excluding balconies and terraces

While every attempt has been made to ensure accuracy, all measurements are approximate, not to scale. This floor plan is for illustrative purposes only.

GIRAFFE360

Floor 0



Floor 1

Approximate total area⁽¹⁾

44.52 m²
479.21 ft²

Bathroom
1.70 x 2.12 m
6'0" x 6'10"

(1) Excluding balconies and terraces

While every attempt has been made to ensure accuracy, all measurements are approximate, not to scale. This floor plan is for illustrative purposes only.

GIRAFFE360

