





**** QUIET CUL DE SAC
LOCATION **** DETACHED
OVERSIZED GARAGE ****

This is a well presented detached bungalow offering a hall, lounge dining room, garden and a fitted kitchen. Two double bedrooms and a shower room, enclosed garden, ample parking and a larger than average garage.



HALL

Side entrance door into the hall with a radiator, storage cupboard and doors to -

LOUNGE DINER

Feature fireplace with electric fire, two radiator's door to the kitchen and garden room.

GARDEN ROOM

Tiled floor and doors onto the garden.

KITCHEN

Fitted wall mounted, base and drawer units with work surfaces and a sink and drainer unit. Fitted electric oven and gas hob and extractor, integrated dishwasher, plumbing and space for a washing machine and spaces for a fridge freezer and tumble dryer. Upvc double glazed window, radiator and a door into the hall.

BEDROOM 1

Upvc double glazed window, and radiator.

BEDROOM 2

Upvc double glazed window, and radiator.

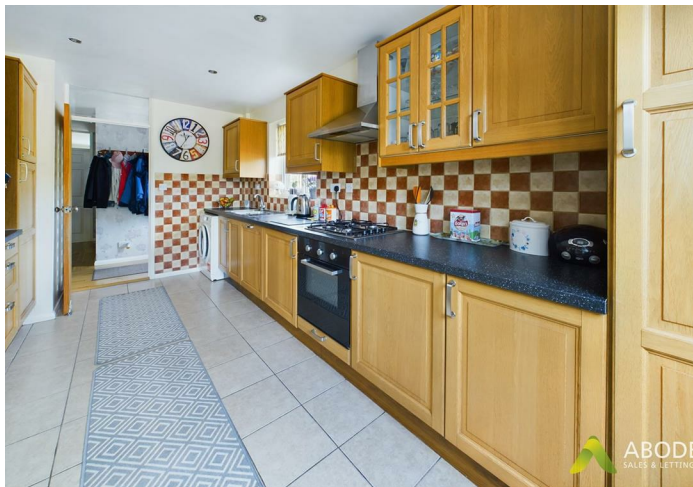
SHOWER ROOM

Walk in shower, low flush wc, wash hand basin, radiator and upvc double glazed window.

OUTSIDE

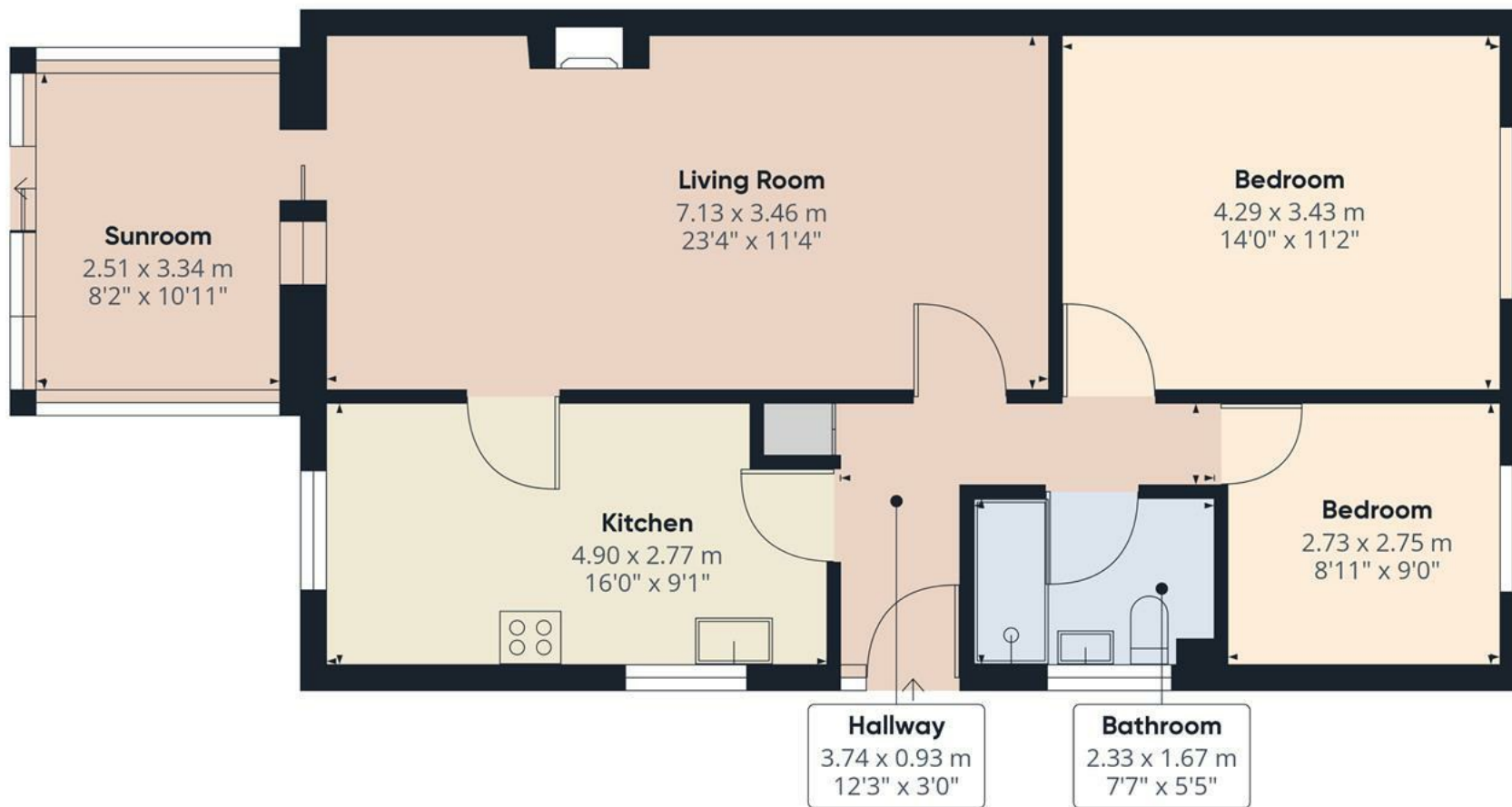
Front drive, detached over sized garage offering longer and wider space, power and lights. Enclosed rear garden offering paved seating areas, pebbles borders and mature plants and shrubs.











Approximate total area⁽¹⁾
79.9 m²
860.03 ft²

(1) Excluding balconies and terraces

While every attempt has been made to ensure accuracy, all measurements are approximate, not to scale. This floor plan is for illustrative purposes only.

GIRAFFE360

