



## 39 Chatsworth Court Park View

Ashbourne, Ashbourne, DE6 1PF

\*\*\*\* SECOND FLOOR APARTMENT WITH JULLETTE BALCONY \*\*\*\* Well presented one bedroom apartment offering a lounge diner, fitted kitchen, double bedroom with wardrobes and a bathroom. Communal parking and well tendered garden.

£80,000

## 39 Chatsworth Court Park View

Ashbourne, Ashbourne, DE6 1PF



SECURE ENTRANCE & AREAS

HALL

LOUNGE DINER

KITCHEN

BEDROOM

BATHROOM

OUTSIDE

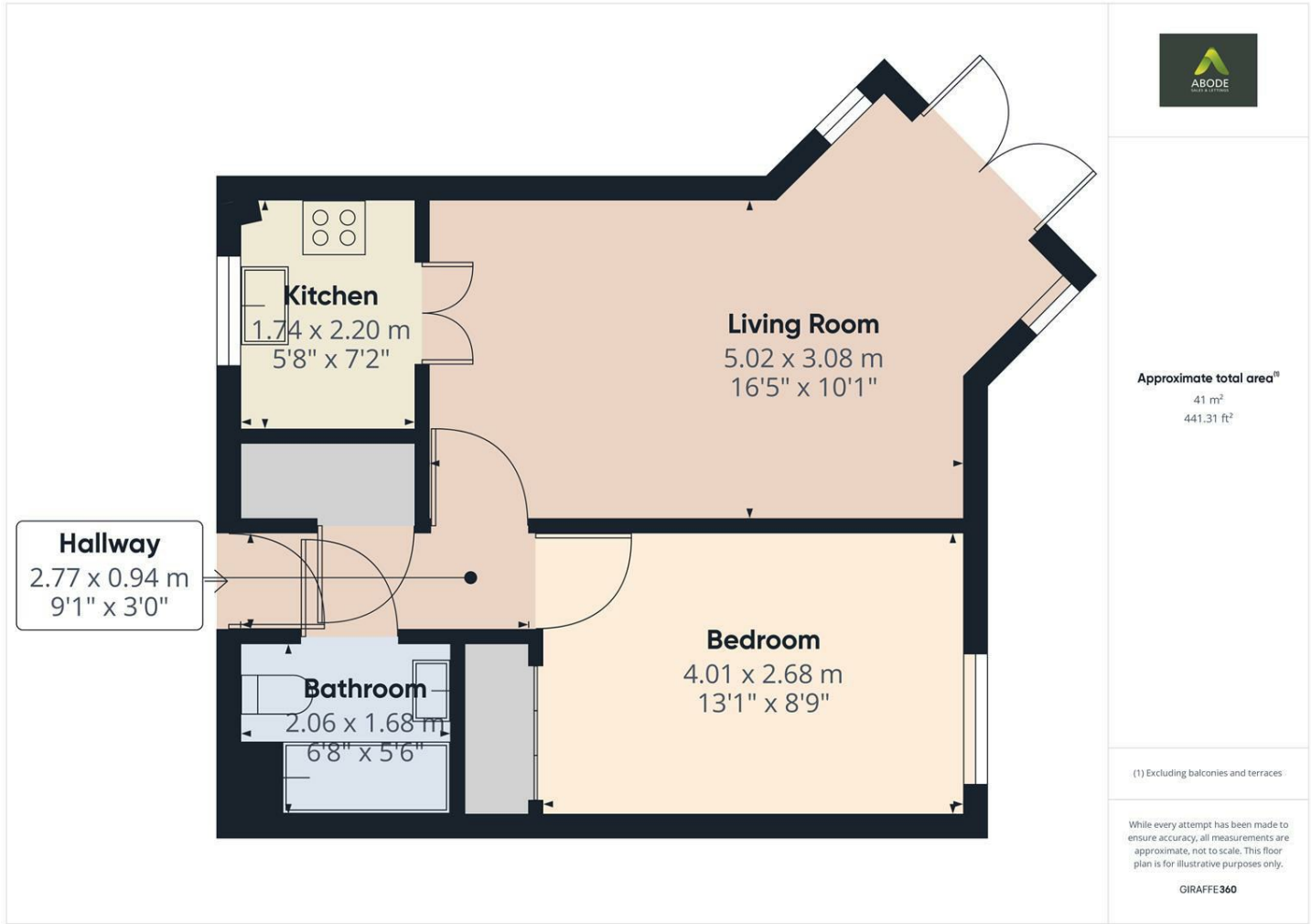


Directions





Floor Plan



These particulars, whilst believed to be accurate are set out as a general outline only for guidance and do not constitute any part of an offer or contract. Intending purchasers should not rely on them as statements of representation of fact, but must satisfy themselves by inspection or otherwise as to their accuracy. No person in this firm's employment has the authority to make or give any representation or warranty in respect of the property.

| Energy Efficiency Rating                    |         |                         |
|---|---------|-------------------------|
|   | Current | Potential               |
| Very energy efficient - lower running costs |         |                         |
| (92 plus) <b>A</b>                          |         |                         |
| (81-91) <b>B</b>                            |         |                         |
| (69-80) <b>C</b>                            |         |                         |
| (55-68) <b>D</b>                            |         |                         |
| (39-54) <b>E</b>                            |         |                         |
| (21-38) <b>F</b>                            |         |                         |
| (1-20) <b>G</b>                             |         |                         |
| Not energy efficient - higher running costs |         |                         |
| England & Wales                             |         | EU Directive 2002/91/EC |