





****** DETACHED FAMILY HOME WITH FOUR BEDROOMS AND A FAMILY ROOM ****** This is a great opportunity in a quiet cul de sac location. In brief the property offers a porch and hall, guest cloakroom, lounge, family room and a dining room, fitted kitchen. Four first floor bedrooms, master with an en suite shower room plus a family bathroom. Front and rear gardens, drive and a single garage. OFFERED FOR SALE WITH NO UPWARD CHAIN.



PORCH

Entrance door into the porch with a door into the hall.

HALL

Stairs to the first floor, radiator and doors to –

CLOAKROOM

Low flush wc and a wash hand basin.

LOUNGE

Double doors into the lounge with upvc double glazed bay window to the front, radiator, feature fireplace and double doors into the dining room.

DINING ROOM

Upvc double glazed patio doors onto the garden, radiator and a door into the kitchen.

KITCHEN

Fitted units with work surfaces and a sink and drainer unit. Electric double oven and hob, appliance spaces, upvc double glazed window, door to the garden and a door to the hall.

FAMILY ROOM

Upvc double glazed window to the front, radiator and a door into the garage.

FIRST FLOOR LANDING

Loft access and doors to –

BEDROOM 1

Wardrobes, radiator, upvc double glazed window to the front and a door to the en suite.



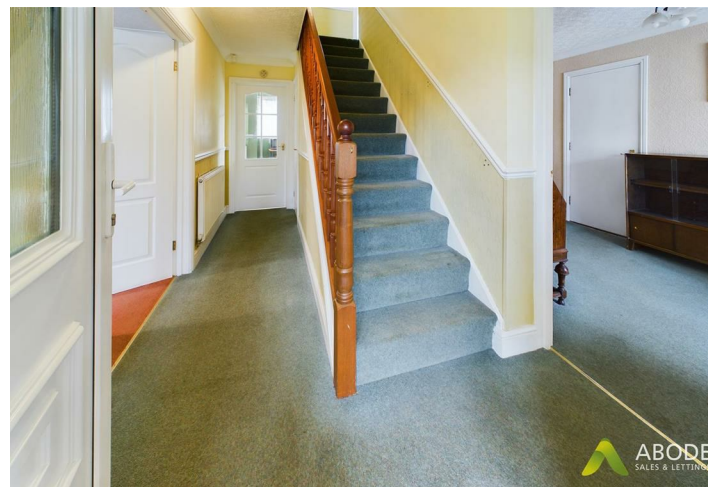
EN SUITE

Enclosed shower, wash hand basin, low flush wc, radiator and upvc double glazed window.

BEDROOM 2

Upvc double glazed window and a radiator.







BEDROOM 3

Upvc double glazed window and a radiator.

BEDROOM 4

Upvc double glazed window and a radiator.

BATHROOM

Panel enclosed bath with a shower, wash hand basin, radiator and upvc double glazed window.

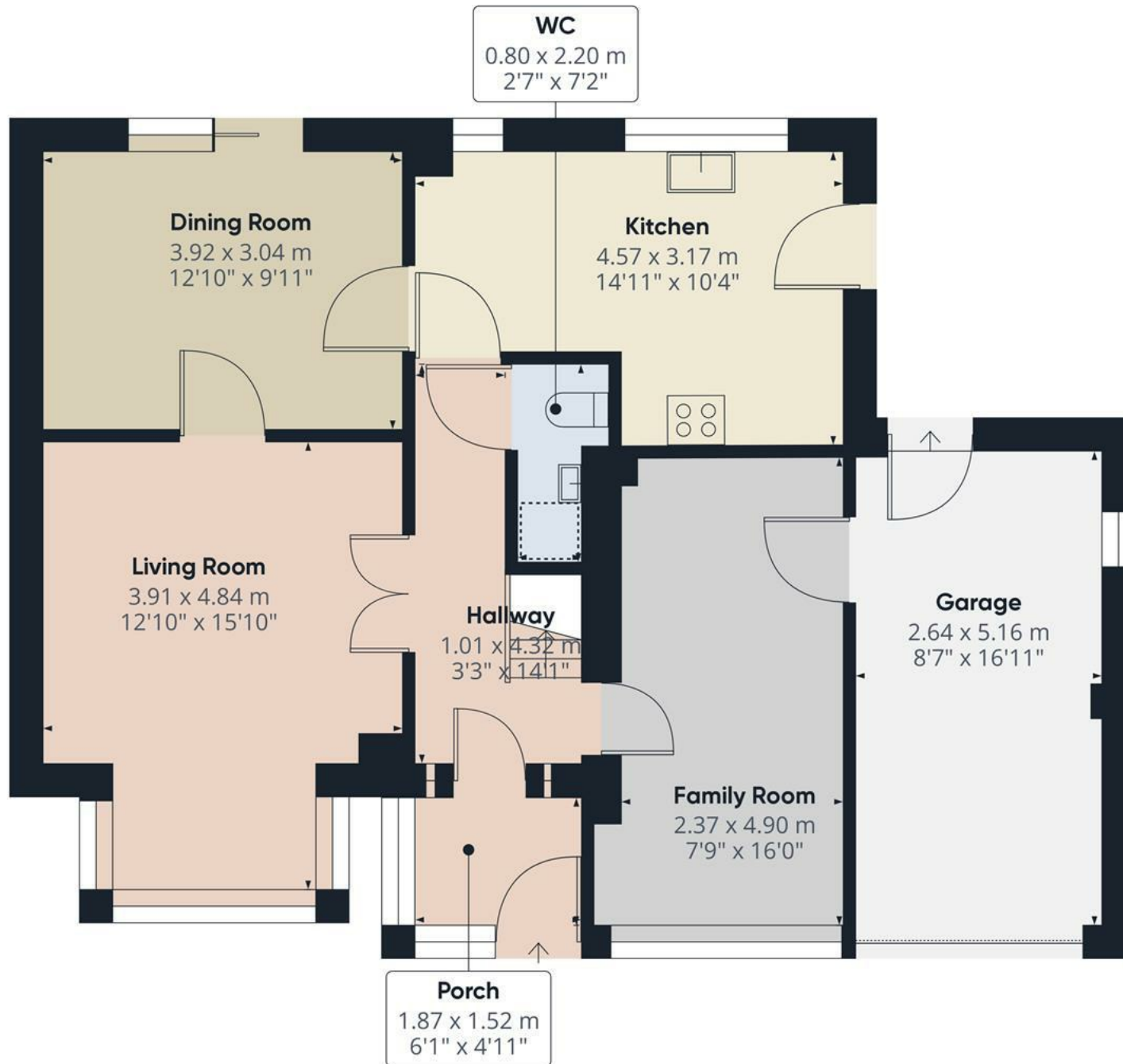
OUTSIDE

Front lawn with hedge, wide drive and a single garage.
Side access to the rear garden offering a lawn, patio areas and mature plants.









Floor 0

Approximate total area⁽¹⁾

79.84 m²
859.37 ft²

Reduced headroom

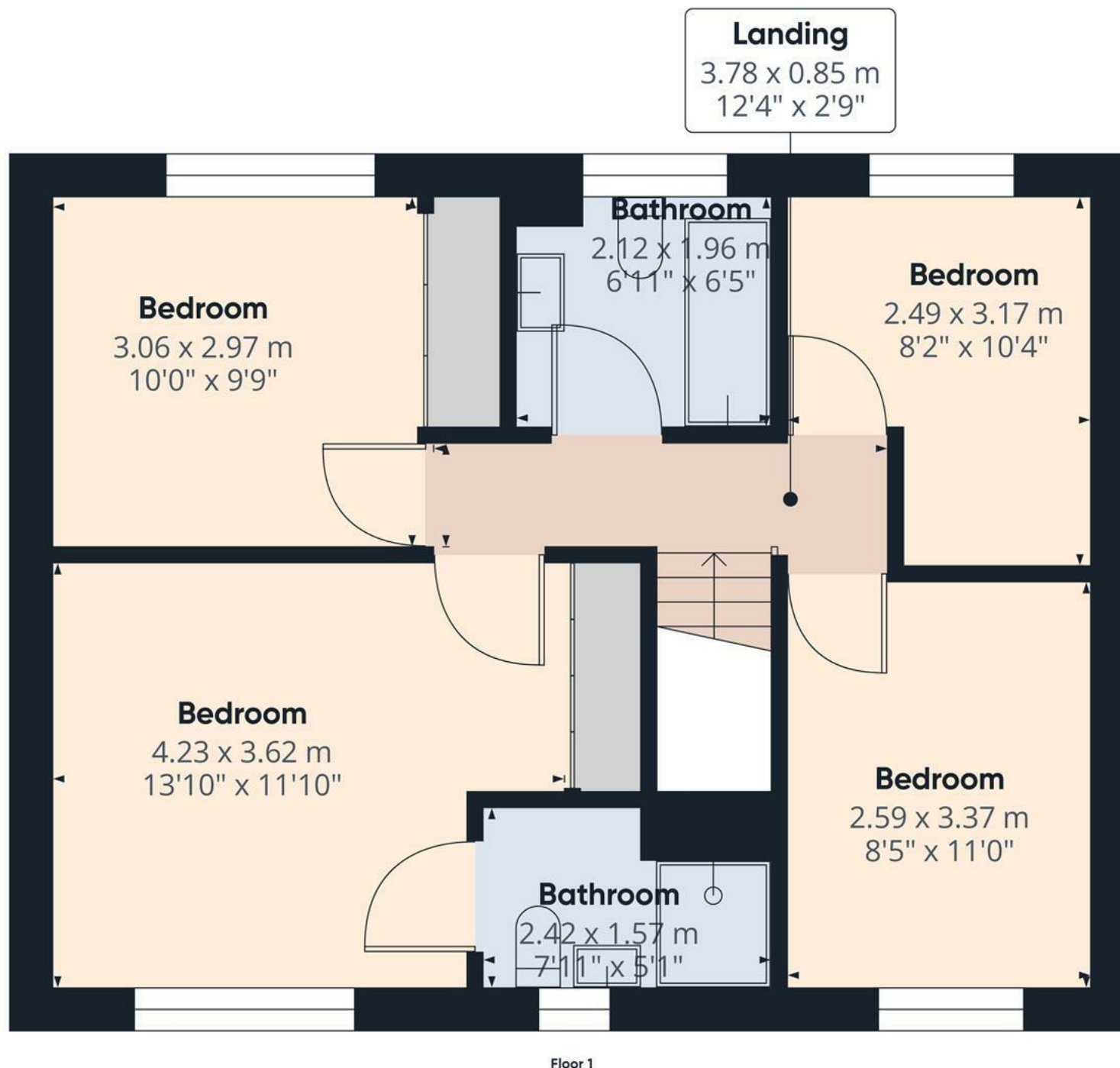
0.48 m²
5.15 ft²

(1) Excluding balconies and terraces

⌈ Reduced headroom
(below 1.5m/4.92ft)

While every attempt has been made to ensure accuracy, all measurements are approximate, not to scale. This floor plan is for illustrative purposes only.

GIRAFFE360



Approximate total area⁽¹⁾

52.19 m²

561.74 ft²

(1) Excluding balconies and terraces

While every attempt has been made to ensure accuracy, all measurements are approximate, not to scale. This floor plan is for illustrative purposes only.

GIRAFFE360

