

31 Ivinson Way, Uttoxeter, ST14 5BF

£1,100 PCM

 **ABODE**  
SALES & LETTINGS







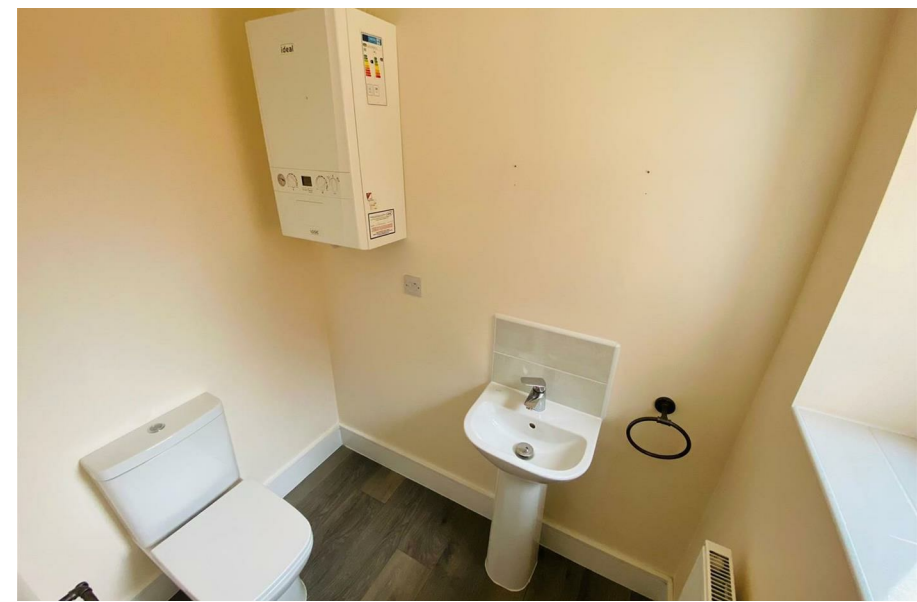


ABODE Lettings are pleased to offer for the first time this three bedroom semi-detached house situated on the edge of the village of Bramshall which has easy access to the A50 with its M1 and M6 connections and also to Uttoxeter train station and Bramshall Meadows offers an easy commute to Derby, Stoke and Stafford.

The property in brief comprises: hallway, lounge, kitchen/diner, utility room, cloakroom/WC, three bedrooms with the master having en-suite facilities and separate family bathroom. Externally there are gardens to the rear and tarmac driveway providing ample off road parking.

Call ABODE Lettings to arrange your viewing!



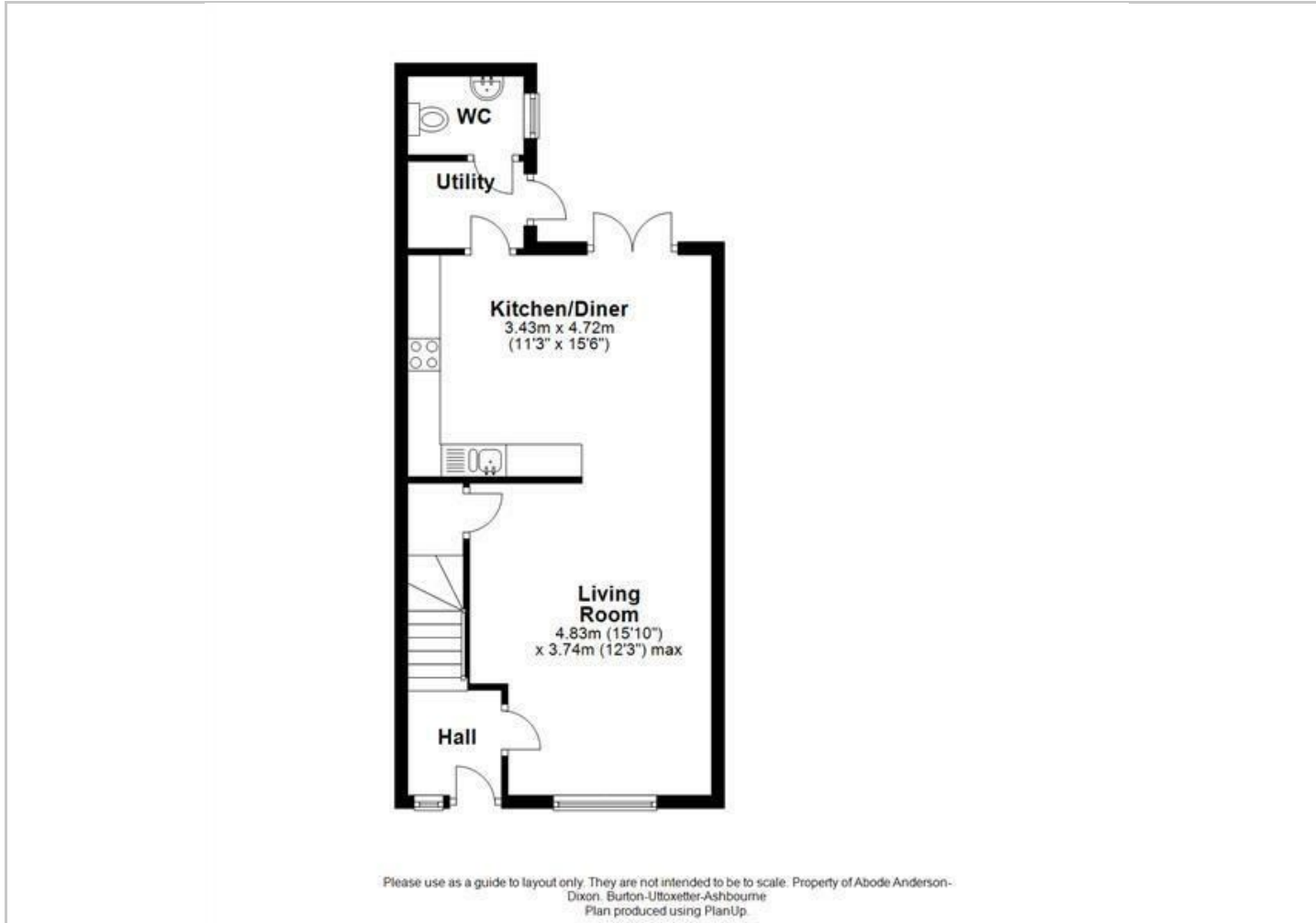




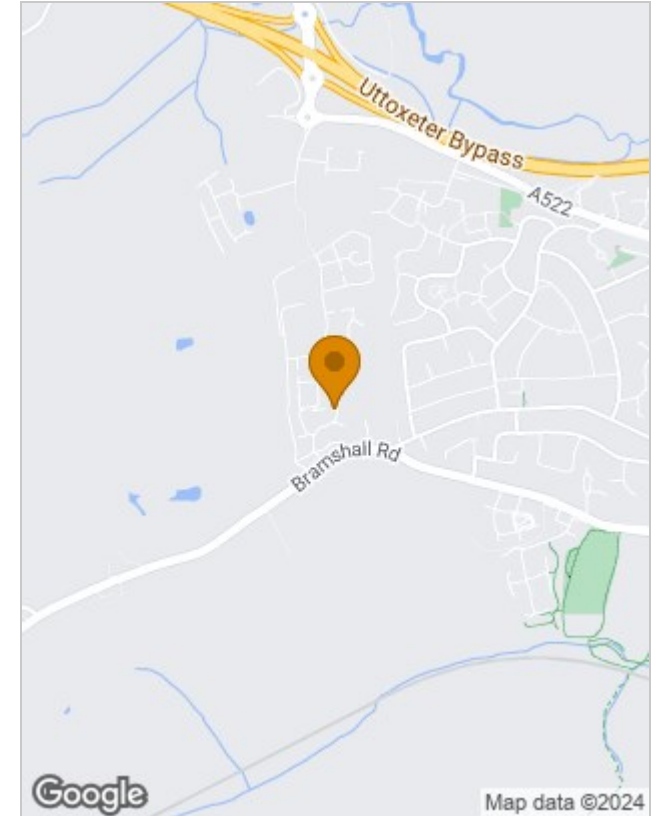




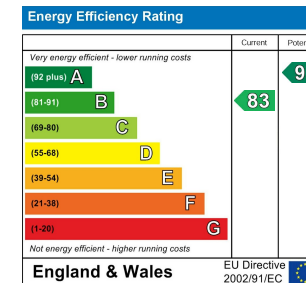
## Floor Plans



## Location Map



## Energy Performance Graph



Please contact our Burton Lettings Office on 01283 845888 if you wish to arrange a viewing appointment for this property or require further information.

The particulars are set out as a general outline only for the guidance of intended purchasers or lessees, and do not constitute, any part of a contract. Nothing in these particulars shall be deemed to be a statement that the property is in good structural condition or otherwise nor that any of the services, appliances, equipment or facilities are in good working order. Purchasers should satisfy themselves of this prior to purchasing.