



4 Augustus way Cheadle, Cheadle, ST10 1FS

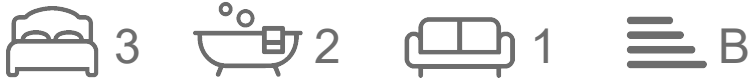
***OPEN DAY, SATURDAY 6TH JULY - 10AM - 2PM, NO APPOINTMENT NECESSARY ***

This immaculate modern house boasts a good size lounge and a fitted kitchen diner with doors onto the landscaped garden. Three bedrooms, master with an en suite shower room and a family bathroom. Long drive to the side and an enclosed garden perfect for children and entertaining. Internal viewing is highly recommended to fully appreciate to the quality of this property.

Offers In Excess Of £225,000

4 Augustus way

Cheadle, Cheadle, ST10 1FS



- MODERN SEMI DETACHED PROPERTY
- FITTED DINING KITCHEN
- LANDSCAPED GARDEN
- HALL & INNER HALL WITH CLOAKROOM
- THREE BEDROOMS
- LONG SIDE DRIVE
- LOUNGE
- BATHROOM & EN SUITE

HALL

OUTSIDE

LOUNGE

NOTE

INNER HALL

CLOAKROOM

KITCHEN DINER

FIRST FLOOR LANDING

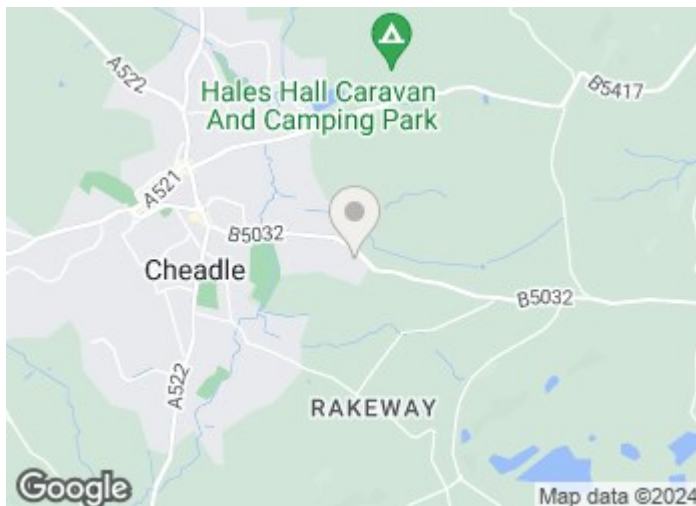
BEDROOM 1

EN SUITE

BEDROOM 2

BEDROOM 3

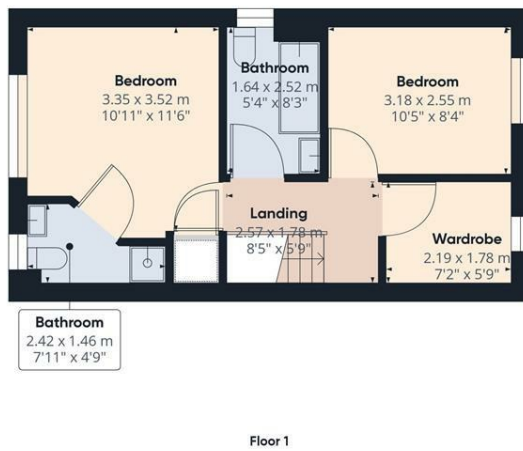
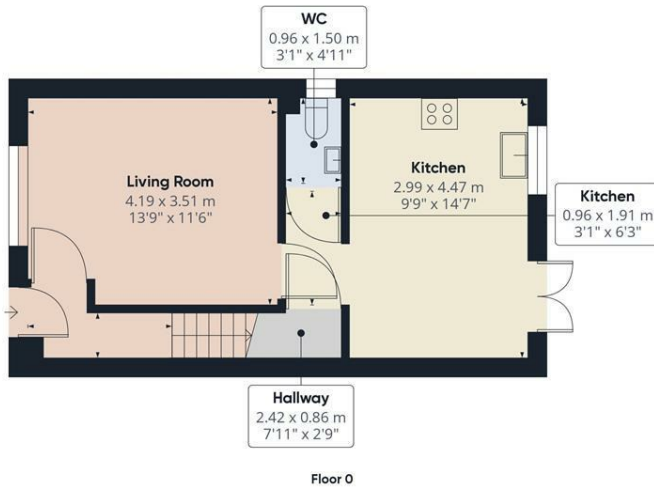
BATHROOM



Directions



Floor Plan



Approximate total area**
70.34 m²
757.12 ft²

(1) Excluding balconies and terraces:

While every attempt has been made to ensure accuracy, all measurements are approximate, not to scale. This floor plan is for illustrative purposes only.

GIRAFFE360

These particulars, whilst believed to be accurate are set out as a general outline only for guidance and do not constitute any part of an offer or contract. Intending purchasers should not rely on them as statements of representation of fact, but must satisfy themselves by inspection or otherwise as to their accuracy. No person in this firm's employment has the authority to make or give any representation or warranty in respect of the property.

1 Cross Street, Cheadle, Cheadle, ST10 1NP
Tel: 01538 750081 Email: ashbourne@abodemidlands.co.uk <https://www.abodemidlands.co.uk>

