





\*\*\*\* BEAUTIFUL GARDEN

\*\*\*\* NO CHAIN \*\*\*\*

Extended semi detached bungalow in a lovely cul de sac location. In brief the property offers a hall, lounge, dining room, kitchen, two bedrooms and a shower room. Front and rear gardens, drive and a single garage. CALL ABODE FOR A VIEWING APPOINTMENT 01538750081



## HALL

Side entrance door into the hall with doors to -

## LOUNGE

15'4 x 12'8

Upvc double glazed window to the front, radiator, and feature fireplace. Door to the kitchen.

## KITCHEN

11'8 x 8'10

Fitted units with work surfaces and a sink and drainer unit. Cooker space, plumbing and space for a washing machine and further appliance spaces. Storage cupboards, and upvc double glazed window and door to the garden.

## DINING ROOM

8'8 x 7'10

Upvc double glazed window to the side, radiator and door to the bedroom.

## BEDROOM 2

8'2 x 6'8

Upvc double glazed window and a radiator.

## BEDROOM 1

12'4 x 10'10

Upvc double glazed window and radiator.

## SHOWER ROOM

9'5 x 6'3

Corner shower cubicle, low flush wc, wash hand basin, radiator and upvc double glazed window.

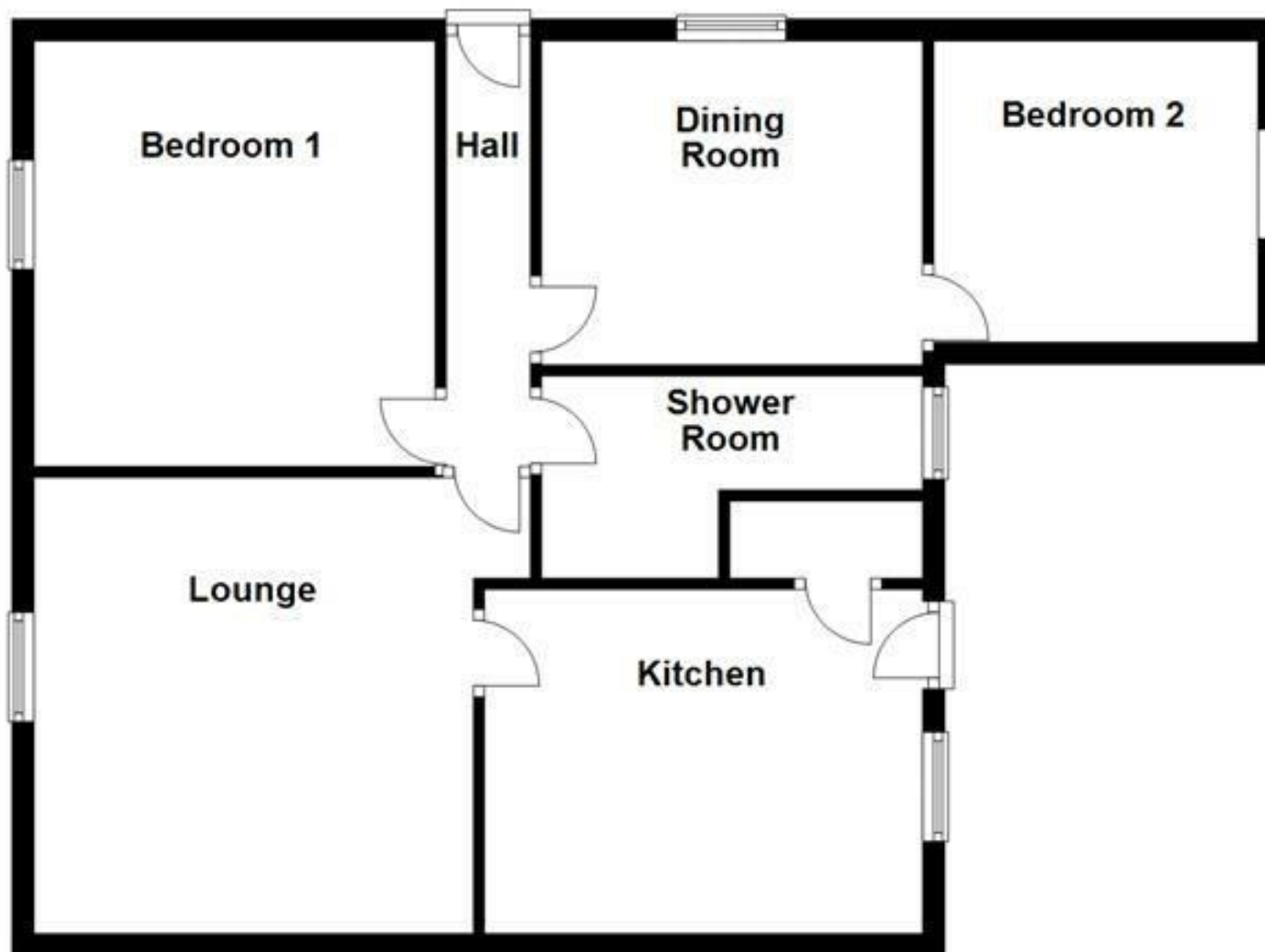
## OUTSIDE

Front garden and side drive down to the single garage. Enclosed rear garden offering seating areas and lawns.





## Ground Floor



Please use as a guide to layout only. They are not intended to be to scale. Property of Abode Anderson-Dixon. Burton-Uttoxetter-Ashbourne  
Plan produced using PlanUp.

