



** PRICE CHANGE TO MEET FINANCIAL YEAR END **

Welcome to Micklehome Drive, Alrewas - a charming village location that could be the perfect setting for your new home! This delightful three-bedroom detached new build property offers a wonderful living space for you and your family to enjoy.

As you step inside, you are greeted by a warm and inviting reception room, perfect for relaxing with loved ones or entertaining guests. With three bedrooms, there is ample space for a growing family or for those who enjoy having a home office or guest room.

This property boasts two bathrooms, ensuring convenience and comfort for all residents. The detached nature of the house provides privacy and a sense of exclusivity that is highly sought after.

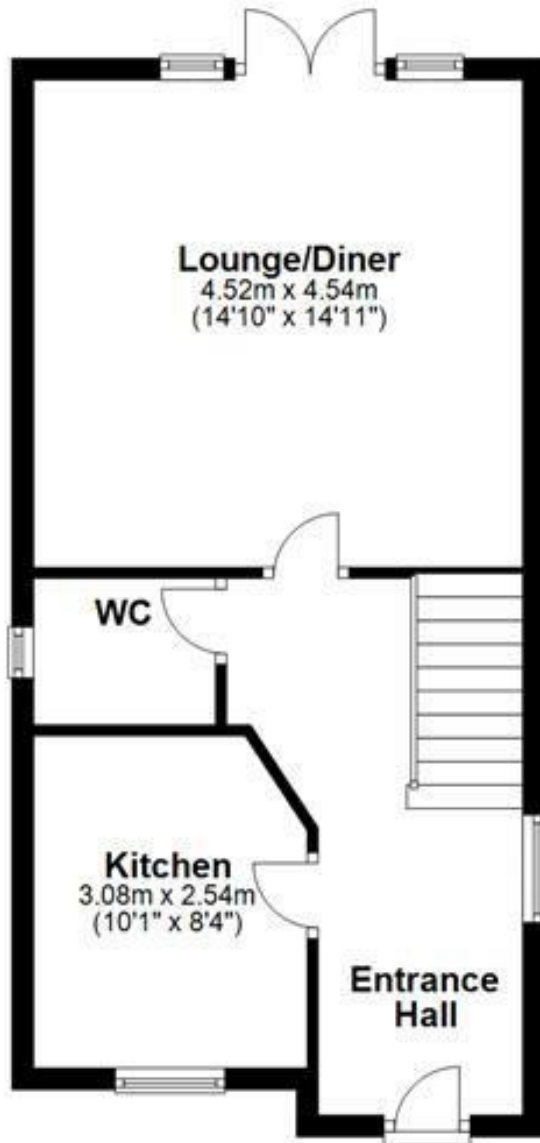
Located in a peaceful village setting, you can enjoy the tranquility of the surroundings while still being within easy reach of local amenities. Don't miss out on the chance to own a piece of this idyllic village lifestyle - book a viewing today and envision the endless possibilities that this property has to offer!



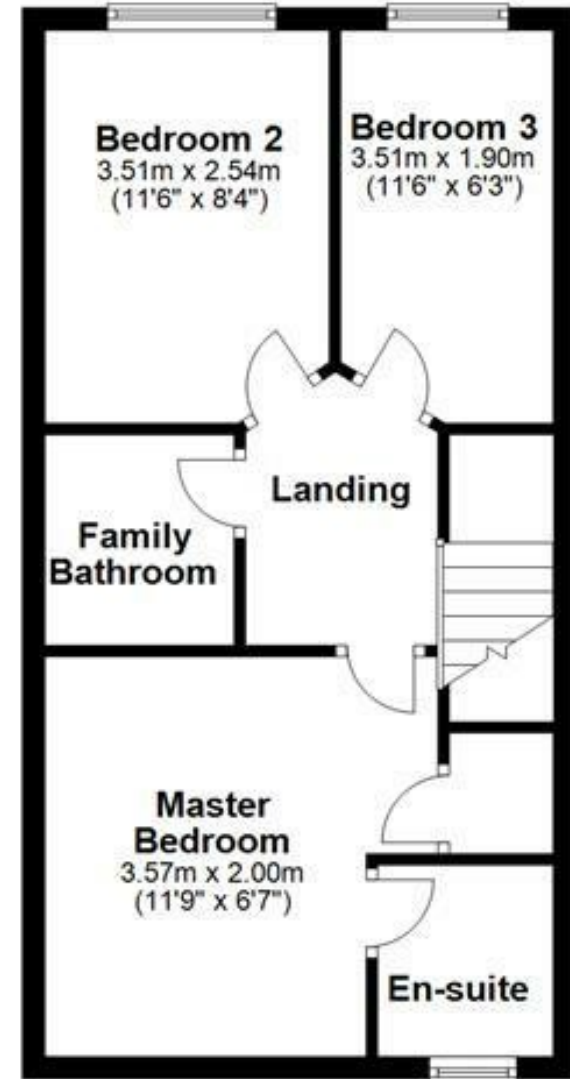
ABODE
SALES & LETTINGS



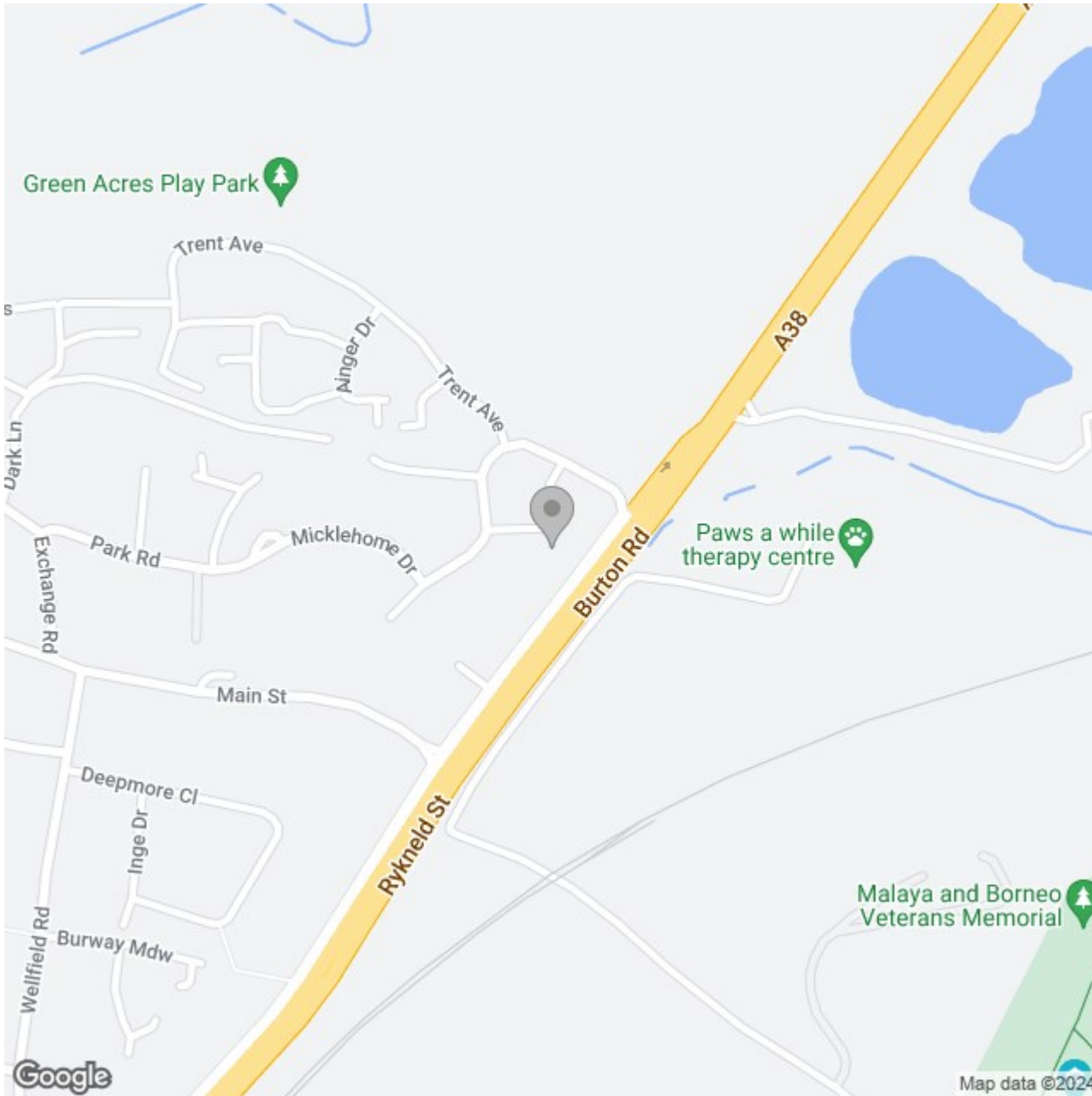
Ground Floor



First Floor



Please use as a guide to layout only. They are not intended to be to scale. Property Anderson-Dixon, Burton-Uttoxetter-Ashbourne
Plan produced using PlanUp.



Energy Efficiency Rating

	Current	Potential
Very energy efficient - lower running costs		
(92 plus) A		96
(81-91) B	84	
(69-80) C		
(55-68) D		
(39-54) E		
(21-38) F		
(1-20) G		
Not energy efficient - higher running costs		
England & Wales	EU Directive 2002/91/EC	