





\*\*\*\* NO CHAIN  
\*\*\*\*Modern detached property in a popular location. In brief the property offers a hall, guest cloakroom, lounge and fitted dining kitchen with utility room. Four first floor bedrooms, master with an en suite and a bathroom. Gardens and rear parking.



## HALL

Entrance door into the hall with stairs to the first floor, radiator and doors to -

## CLOAKROOM

Low flush wc, wash hand basin, radiator.

## LOUNGE

19'5 x 11'4

Radiator, window and doors onto the garden

## KITCHEN DINER

14'10 x 11'1

Fitted units with work surfaces and sink and drainer unit. Two windows, radiator and door to -

## UTILITY ROOM

Plumbing and space for a washing machine and door two the side.

## FIRST FLOOR LANDING

Doors to -

## BEDROOM 1

11'9 x 10'5

Window and radiator.

## EN SUITE

Shower, low flush wc, wash hand basin and radiator.

## BEDROOM 2

11'5 x 9'8

Window and radiator.

## BEDROOM 3

11'7 x 7'8

Window and radiator.



## BEDROOM 4

10'8 x 7'8

Window and radiator.

## BATHROOM

Bath, wash hand basin, radiator, low flush wc, window.

## OUTSIDE

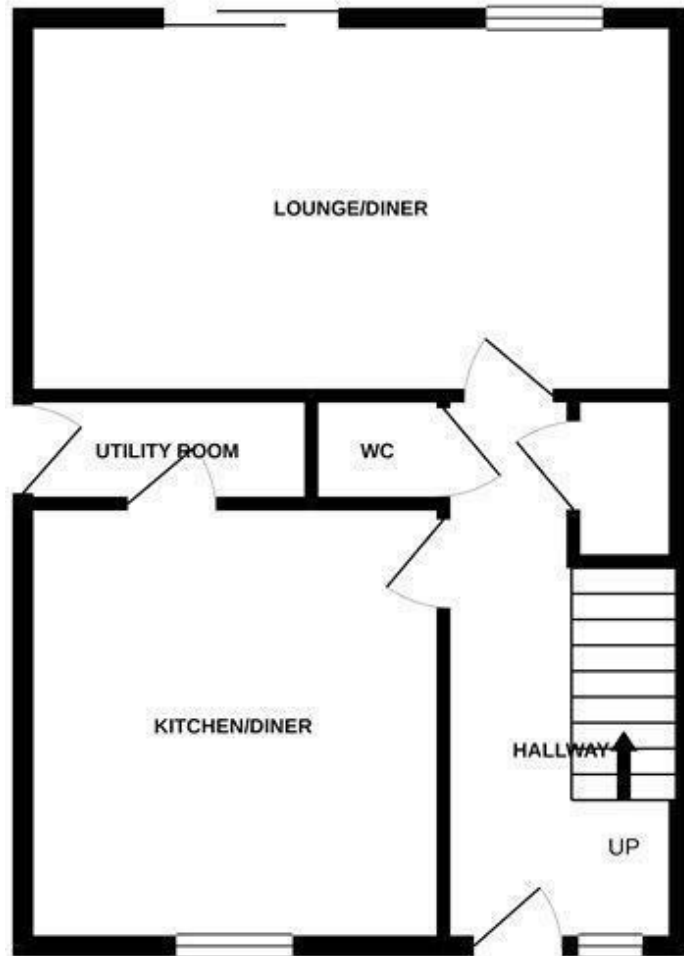
Front lawn, rear parking and a gate to the enclosed rear garden with patio, artificial grass and a workshop/summer house.



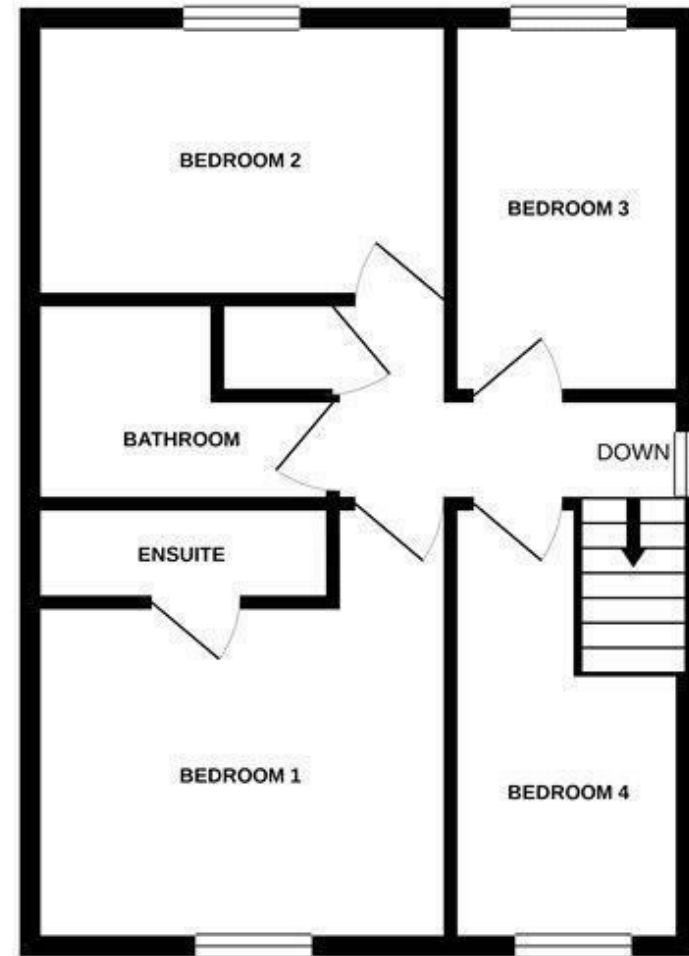




GROUND FLOOR



1ST FLOOR



Whilst every attempt has been made to ensure the accuracy of the floorplan contained here, measurements of doors, windows, rooms and any other items are approximate and no responsibility is taken for any error, omission or mis-statement. This plan is for illustrative purposes only and should be used as such by any prospective purchaser. The services, systems and appliances shown have not been tested and no guarantee as to their operability or efficiency can be given.  
Made with Metropix ©2021

