





\*\*\*\* INDIVIDUALLY DESIGNED  
AND BUILT BY THE CURRENT  
OWNERS \*\*\*\* FOUR BEDROOMS,  
FOUR EN SUITES AND A FAMILY  
BATHROOM \*\*\*\*STUNNING  
COUNTRYSIDE VIEWS \*\*\*\* This is a  
great opportunity to purchase a  
good size detached family home in  
the highly regarded village of  
Fenny Bentley. The property offers  
an entrance hall, large lounge with  
wood burning stove, fitted dining  
kitchen, family room, utility room  
and family bathroom. The first  
floor offers a large landing with  
reading/study area, four double  
bedrooms and four en suite shower  
rooms. Front and rear gardens and  
parking. Previous planning  
permission for a double garage.  
Potential for B&B.

 **ABODE**  
SALES & LETTINGS

## ENTRANCE HALL

Entrance door into the hall with stairs to the first floor, under stairs cupboard, oak wood flooring with under floor heating and doors to -

## LOUNGE

34'10 x 12'6

Feature wood burning stove, oak wood flooring with under floor heating, upvc double glazed windows and double doors.

## FITTED DINING KITCHEN

22'4 x 10'6

Fitted units with oak work surfaces and a sink and drainer unit. Larder fridge freezer, range style cooker and extractor hood, dishwasher, upvc double glazed windows, tiled floor with under floor heating.

## FAMILY ROOM

18'8 x 10'7

Oak floor with under floor heating, upvc double glazed window.

## UTILITY ROOM

12'5 x 7'8

Fitted units with work surface and sink and drainer unit. Plumbing and space for a washing machine and space for a tumble dryer. Oak flooring with under floor heating and upvc double glazed window.

## BATHROOM

8'2 8'0

Jacuzzi bath, vanity sink unit with wash hand basin and storage cupboard, low flush wc, tiled floor with under floor heating and a upvc double glazed window.



## FIRST FLOOR LANDING

Large landing with upvc double glazed window, radiator and potential to add another room.

## BEDROOM

16'8 x 11'7

Upvc double glazed window and sky light window, radiator and door to the en suite.

## EN SUITE

Enclosed shower, vanity sink unit with wash hand basin and storage cupboard, radiator and low flush wc.







### **BEDROOM**

16'8 x 11'7

Upvc double glazed window and sky light window, radiator and door to the en suite.

### **EN SUITE**

Enclosed shower, vanity sink unit with wash hand basin and storage cupboard, radiator and low flush wc.

### **BEDROOM**

18'4 x 11'8

Upvc double glazed window and sky light window, radiator and door to the en suite.

### **EN SUITE**

Enclosed shower, vanity sink unit with wash hand basin and storage cupboard, radiator and low flush wc.

### **BEDROOM**

18'4 x 11'8

Upvc double glazed window and sky light window, radiator and door to the en suite.

### **EN SUITE**

Enclosed shower, vanity sink unit with wash hand basin and storage cupboard, radiator and low flush wc.

### **OUTSIDE**

Front parking and garden, previous planning for a double garage.

The rear garden offers a patio, storage under the lounge and a metal shed. Stunning countryside views.





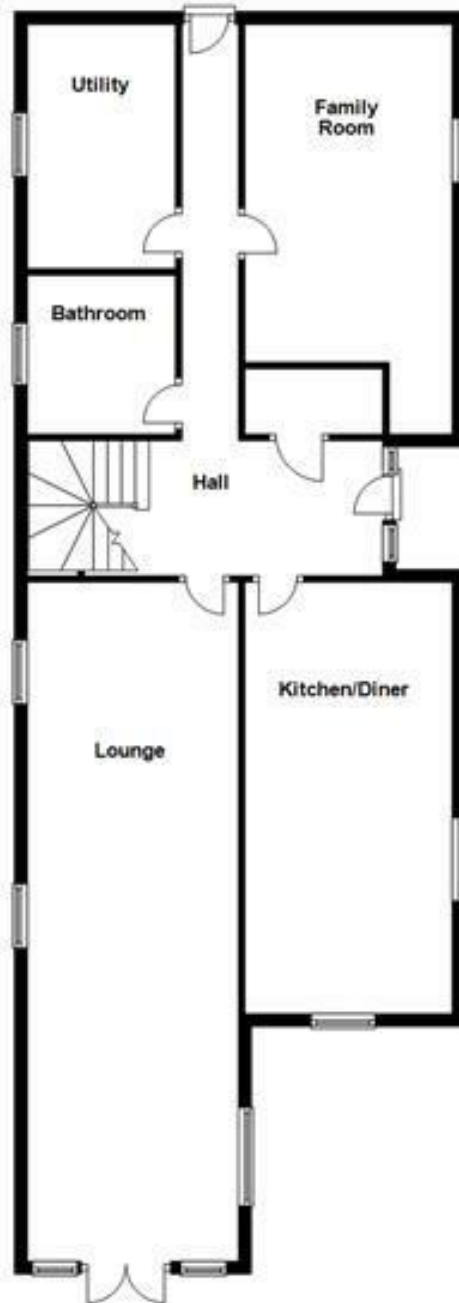








Ground Floor



First Floor

