



Pre-show home offer - receive a £15,000 contribution and a flooring package worth over £7,000.

Abode are pleased to present to the market this rare opportunity to buy on the stunning David Wilson Drakelow Park. Call us on 01283 845888 for more information.

The Meriden is a light and bright detached home thanks to an attractive bay-fronted lounge and glazed bay in the open-plan family kitchen-diner leading to the garden and a spacious lounge. You'll find plenty of storage options in the handy utility and integral garage.

Upstairs there are four double bedrooms. The main with en suite and dressing area, and a family bathroom with shower.



HALLWAY

LOUNGE
18'11" x 10'7"

WC
5'10" x 2'10"

KITCHEN/FAMILY/DINING
21'3" x 15'6"

BEDROOM 1
17'1" x 12'6"

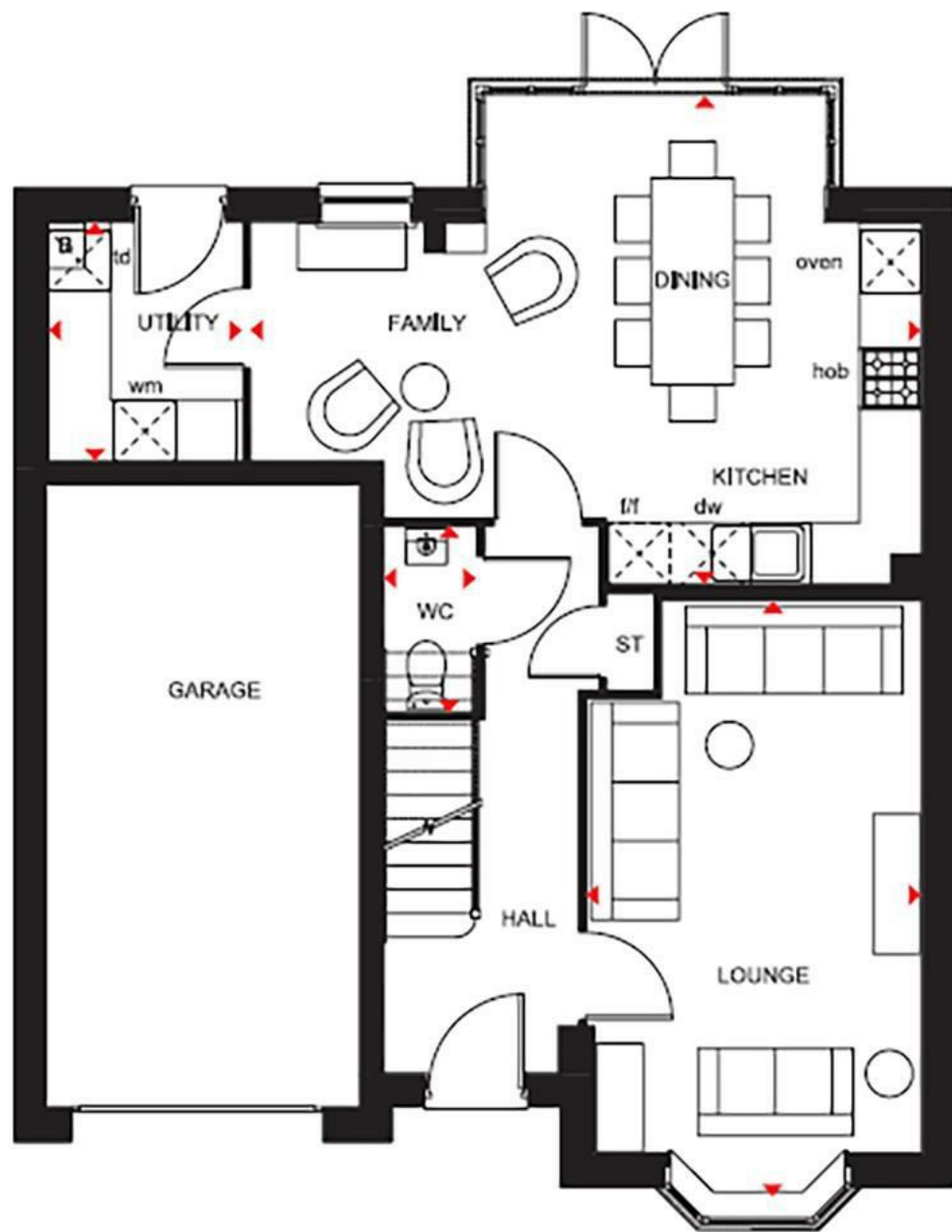
EN SUITE
7'3" x 6'3"

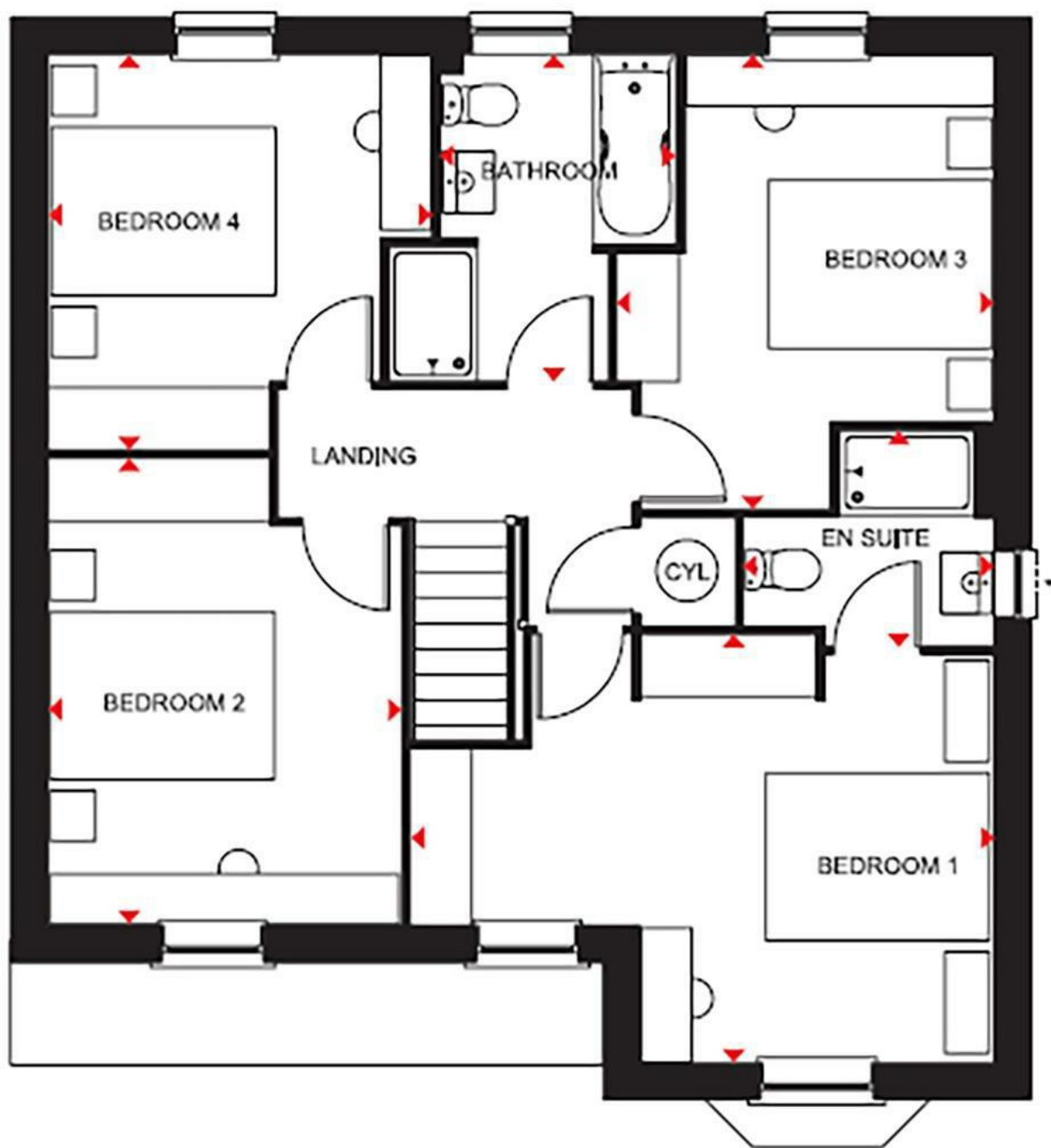
BEDROOM 2
13'7" x 10'4"

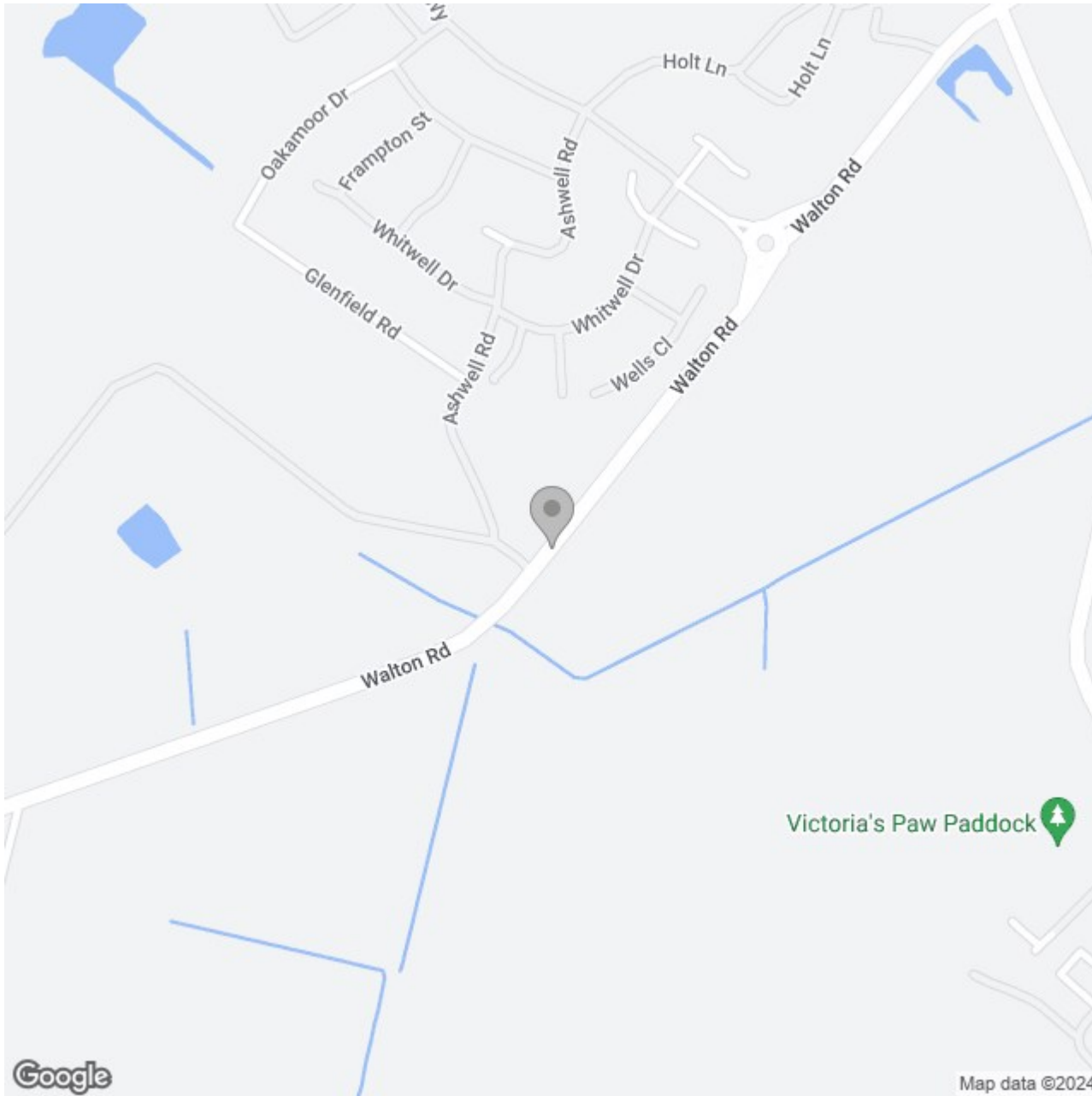
BEDROOM 3
13'3" x 11'0"

BATHROOM
9'6" x 6'10"

BEDROOM 4
11'6" x 11'2"







Energy Efficiency Rating

	Current	Potential
<i>Very energy efficient - lower running costs</i>		
(92 plus) A		
(81-91) B		
(69-80) C		
(55-68) D		
(39-54) E		
(21-38) F		
(1-20) G		
<i>Not energy efficient - higher running costs</i>		
England & Wales	EU Directive 2002/91/EC	